



GROOMFIELD CLOSE, SW17

£590,000

- Ground Floor
- Private Entrance
- Excellent Condition
- Private Garden
- Office/ Studio Space
- Private Garage

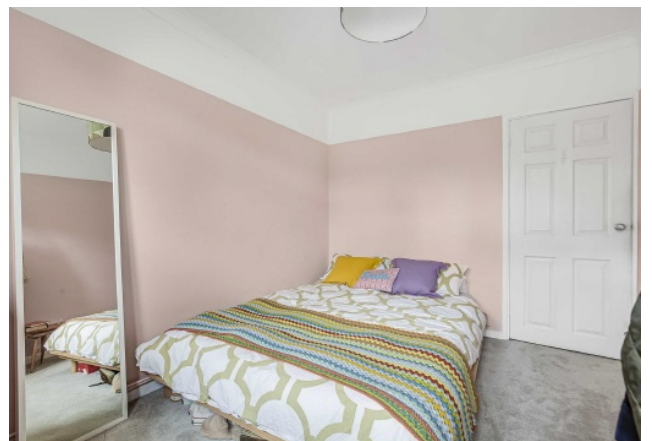




ABOUT THE HOME

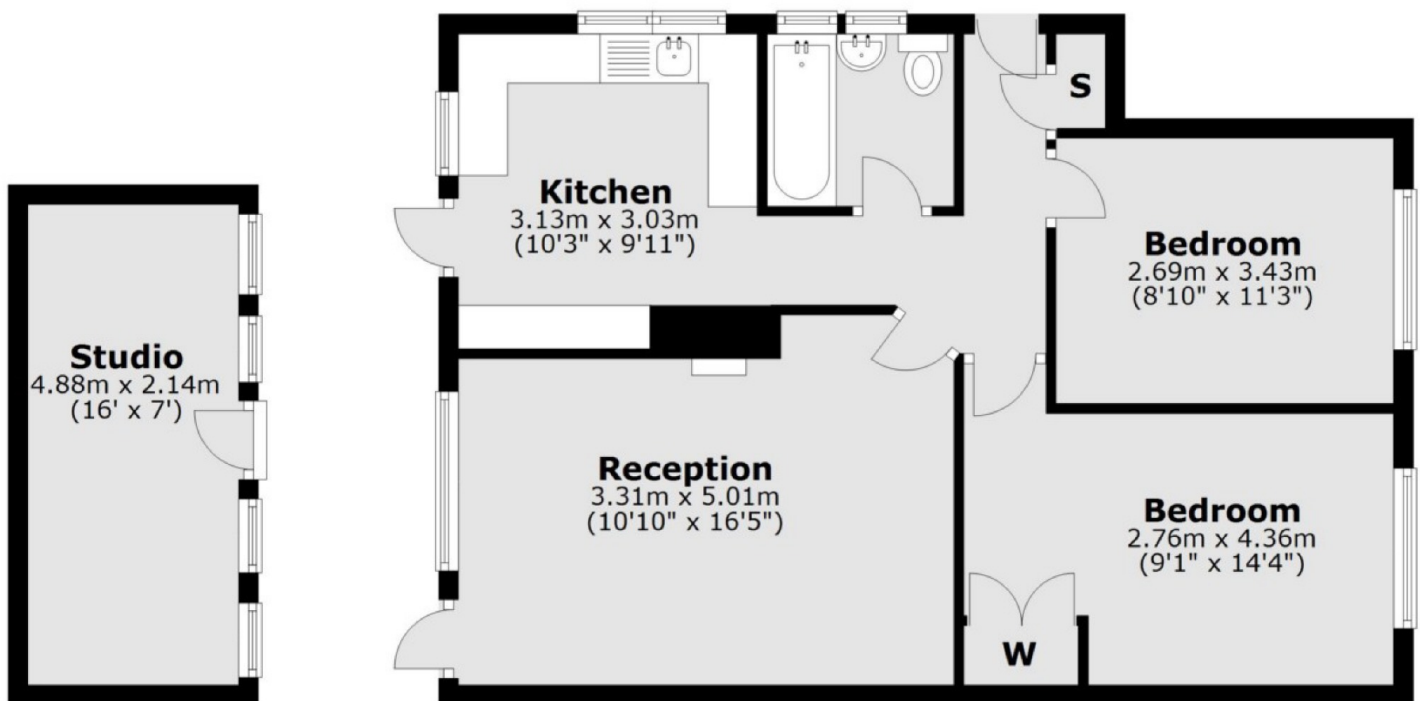
A beautifully presented two bedroom ground floor flat with a stunning south facing private garden and garage.

The property is in a small development close to Tooting Bec giving ease of access in and out of central London, as well as providing easy access to both Tooting Bec underground (Northern Line) and Tooting overground stations.





Ground Floor



Main area: Approx. 59.6 sq. metres (642.0 sq. feet)
Plus outbuildings, approx. 10.4 sq. metres (112.4 sq. feet)

JACKSONS TOOTING

3 Upper Tooting Road, London,
SW17 7TS
Sales: 020 8487 3175
Lettings: 020 8487 3176

Energy Rating: We aim to make our particulars both accurate and reliable. However they are not guaranteed; nor do they form part of an offer or contract. If you require clarification on any points then please contact us, especially if you're traveling some distance to view. Please note that appliances and heating systems have not been tested and therefore no warranties can be given as to their good working order.