



Aldington Road, SW16

£300,000

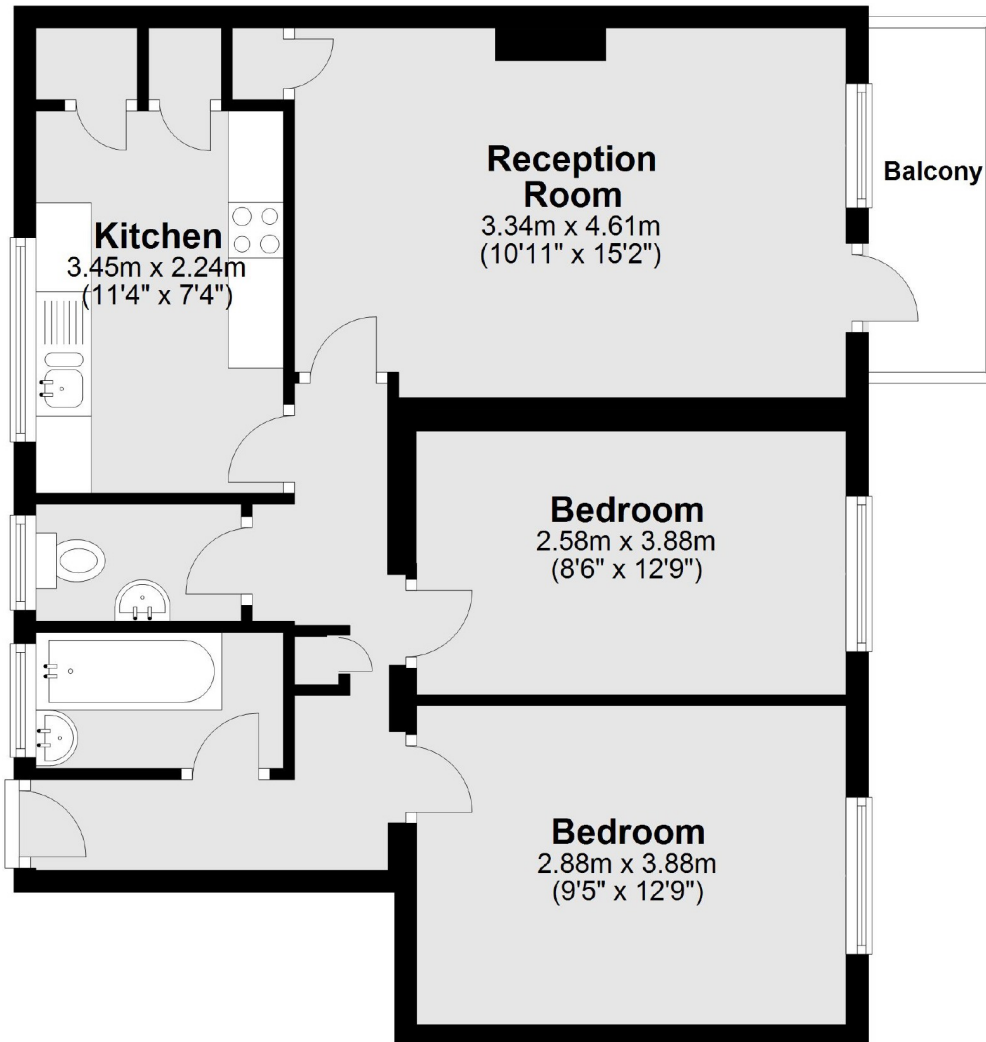
A large and spacious two double bedroom first floor apartment. The property is in excellent condition and has a private balcony.

- Two Double Bedrooms
- Balcony
- Communal Garden
- Leasehold
- Tooting Bec
- Wandsworth Borough



Busby House is a well maintained building, surrounded by pleasant communal gardens on Aldrington Road within Wandsworth Borough. Tooting Bec Common is in close proximity as are the local amenities, shops and restaurants of Tooting and Streatham. Transport options include the Northern Line underground at Tooting Bec, mainline train station at Streatham and local buses.





Main area: Approx. 61.1 sq. metres (657.5 sq. feet)

Plus balconies, approx. 3.6 sq. metres (38.7 sq. feet)

Jacksons Tooting
26 Tooting Bec Road
London
SW17 8BD
020 8767 0522
tooting.sales@jacksonsestateagents.com

Energy Rating: We aim to make our particulars both accurate and reliable. However they are not guaranteed; nor do they form part of an offer or contract. If you require clarification on any points then please contact us, especially if you're traveling some distance to view. Please note that appliances and heating systems have not been tested and therefore no warranties can be given as to their good working order.