

FOR SALE



Abbey
Lettings & Sales



Donaldson Drive

Hugglescote, LE67 2NL

£395,750



Nestled in the charming Donaldson Drive, Hugglescote, Leicestershire, this brand new detached family home is a true gem waiting to be discovered. Boasting four bedrooms and two bathrooms, this spacious property offers ample room for a growing family.

As you step inside, you are greeted by a large family/kitchen/dining room, perfect for entertaining guests or simply enjoying quality time with your loved ones. The modern design and new build quality of this house ensure that you will be living in both style and comfort.

The convenience of having two bathrooms means no more waiting in line during the morning rush, adding a touch of luxury to your daily routine. Additionally, the presence of a driveway and garage provides extra storage space and security for your vehicles. Situated on a large plot size, there is plenty of outdoor space for children to play or for you to relax in the fresh air.

Don't miss out on the opportunity to make this stunning property your new home. Book a viewing today and envision the endless possibilities that await you at this beautiful address on Donaldson Drive.



Entrance Hall

Ceiling light point, radiator, Amtico flooring, alarm control system, doors leading to the front of the property, lounge, kitchen/diner, WC, utility room and stairs leading to landing and first floor.

Lounge 11'3" x 17'10" (3.450 x 5.450)

Ceiling light point, two radiators, luxury carpeted flooring, two double glazed windows, TV point and door leading to the entrance hall.

Kitchen/Diner 24'4" x 14'0" (7.430 x 4.275)

Ceiling spot light points, Amtico flooring and a stunning new fitted kitchen comprising base and wall units, quartz worktop, sink and drainer, hot and cold mixer tap over, integrated NEFF fridge/freezer, NEFF dishwasher, gas hob, two NEFF ovens, extractor fan, two radiators, double glazed window and stunning double glazed bi fold doors leading to rear garden.

Utility Room 5'8" x 9'5" (1.750 x 2.875)

Ceiling light point, Amtico flooring, base and wall units, worktop, sink and drainer, hot and cold mixer tap over, radiator and doors leading to side of the property and entrance hall.

WC 5'8" x 4'8" (1.750 x 1.440)

Ceiling light point towel radiator,, Amtico flooring, a 2 piece Villeroy & Boch suite comprising of wash hand basin and low level flush toilet.

Stairs & Landing to 1st Floor

Ceiling light point, carpeted flooring, radiator and doors leading to bedroom 1, 2, 3, 4 and bathroom.

Bedroom 1 17'1" x 15'11" (5.230* x 4.860*)

Ceiling light point, double glazed window, fitted wardrobe, radiator, TV point and luxury carpeted flooring.

Ensuite 7'11" x 4'4" (2.425 x 1.335)

Ceiling spot light points, double glazed window, towel radiator, luxury tiled flooring. a 3 piece Villeroy & Boch suite comprising of a wash hand basin, low-level flush toilet and of walk-in shower.

Bedroom 2 10'2" x 12'7" (3.120* x 3.860*)

Ceiling light point, double glazed window, fitted wardrobe, radiator and luxury carpeted flooring.

Bedroom 3 8'6" x 9'3" (2.605 x 2.825)

Ceiling light point, double glazed window, radiator and luxury carpeted flooring.

Bedroom 4 7'11" x 9'4" (2.425 x 2.865)

Ceiling light point, double glazed window, radiator and luxury carpeted flooring.

Bathroom 7'3" x 6'1" (2.225 x 1.855)

Ceiling spot light points, double glazed window, towel radiator, luxury tiled flooring, a 3 piece Villeroy & Boch suite comprising of a wash hand basin and a low level flush toilet and bath with thermostatic shower over.

Externally

To The Front Of The Property

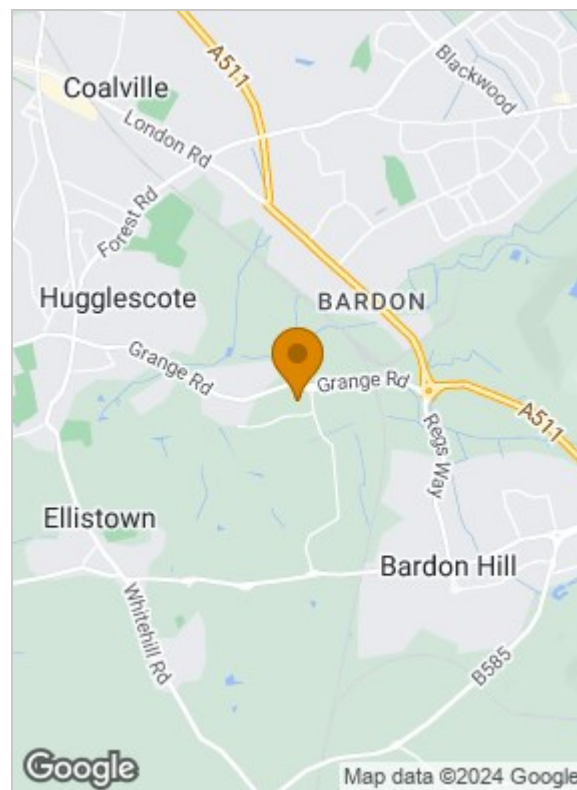
Slabbed path to the front door, a driveway for 2 cars to the side and single garage

To The Back Of The Property

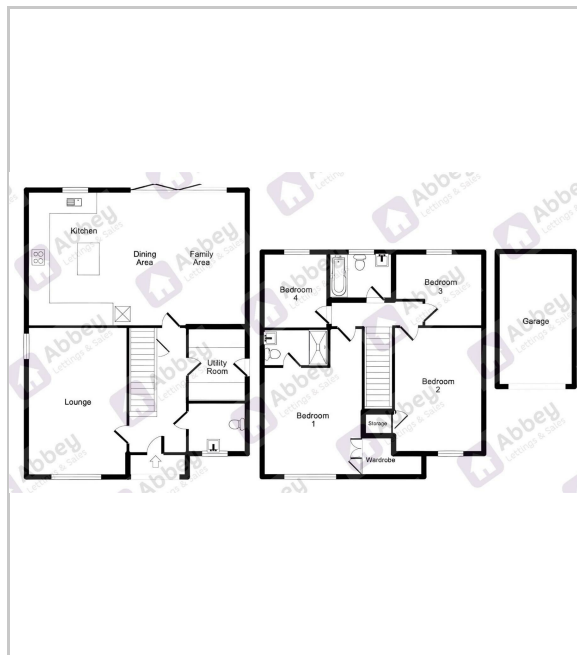
There is an enclosed garden with patio area and turf area.

****PLEASE NOTE THAT THE INTERNAL PHOTOS ARE OF A DIFFERENT PLOT BUT SAME BUILD DESIGN****

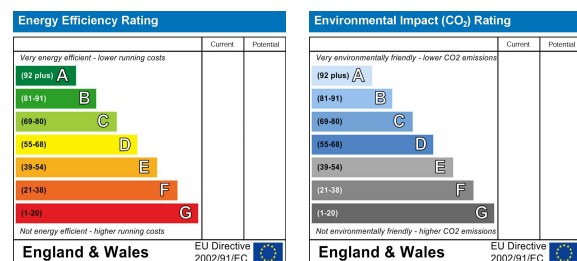
Area Map



Floor Plans



Energy Efficiency Graph



101 Buckminster Road, Leicester, Leicestershire, LE3 9AT
Tel: 01162963300 Email:
enq@abbeyls.com <https://www.abbeyls.com>