

FOR SALE



Abbey
Lettings & Sales



Milton Crescent

Leicester, LE4 0PB

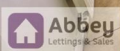
£1,100



A Beautiful 3 bedroom Semi-Detached house available for rent. Discover the perfect home for your family in this spacious semi-detached home. With ample living space and modern amenities, this property offers comfort and convenience for all.

The property comprises of entrance hall, lounge/diner, kitchen and conservatory. To the first floor there are three bedrooms and a bathroom. The property also offers double glazed windows, gas central heating and single garage.

This lovely home is the perfect rental opportunity for families seeking comfort and convenience. Don't miss out on the chance to make this wonderful residence your new home. Contact us today to arrange a viewing and secure your rental.



Entrance Hall

UPVC front door, ceiling light point, radiator, tiled flooring, storage cupboard and doors leading to lounge/diner and kitchen.

Lounge/Diner 19'2" x 14'1" (5.863 x 4.297)

Two ceiling light points, double glazed windows, 2 radiators, virgin and bt media points, laminate wood flooring, stairs leading to 1st floor and patio door leading to conservatory.

Kitchen 11'1" x 8'1" (3.403 x 2.471)

Ceiling light point, double glazed window, fully fitted kitchen offering base and wall cupboards, rolled edge worktop with sink and drainer with hot and cold mixer tap, integrated 4 ring gas hob, electric oven and extractor fan, plumbing for washing machine, dishwasher and tiled flooring.

Conservatory 18'0" x 7'10" (5.507 x 2.406)

Wall light point, double glazed window, parquet flooring and patio door leading to rear garden.

Stairs & Landing to 1st Floor

Ceiling light point, airing cupboard, carpeted flooring and doors leading to bedroom 1, 2, 3, shower and wc.

Bedroom 1 10'8" x 10'6" (3.265 x 3.202)

Ceiling light point, double glazed window, radiator, fitted wardrobes draw unit and carpeted flooring.

Bedroom 2 12'9" x 8'6" (3.889 x 2.605)

Ceiling light point, double glazed window, radiator, fitted wardrobe and carpeted flooring.

Bedroom 3 10'7" x 7'8" (3.232 x 2.342)

Ceiling light point, double glazed window, radiator and carpeted flooring.

Bathroom 8'11" x 5'4" (2.720 x 1.649)

Ceiling light point, double glazed window, radiator, laminate wood flooring, a 2 piece suite comprising of bath with electric shower, and wash hand basin.

Separate WC 6'0" x 2'9" (1.840 x 0.855)

Ceiling light point, double glazed window, laminate wood flooring and low level flush toilet.

Externally

Single Garage 16'5" x 8'0" (5.013 x 2.441)

Up & Over door, ceiling light point and power points.

To The Front of The Property

There is a driveway for 2 vehicles which leads to a single garage and front door.

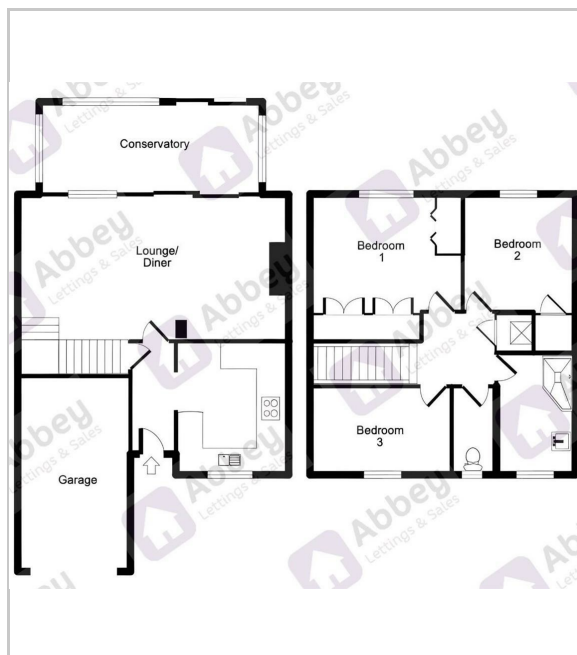
To The Rear of The Property

There is an enclosed garden offering patio area with shrub borders and shed.

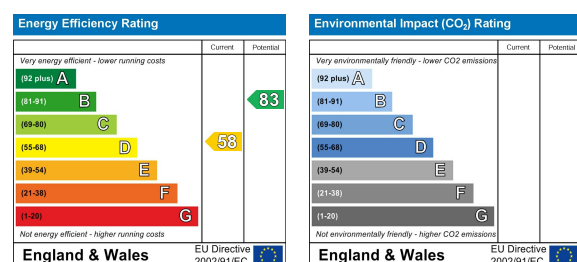
Area Map



Floor Plans



Energy Efficiency Graph



101 Buckminster Road, Leicester, Leicestershire, LE3 9AT
Tel: 01162963300 Email: enq@abbeyls.com https://www.abbeyls.com