

FOR SALE



Abbey
Lettings & Sales



Marquis Street

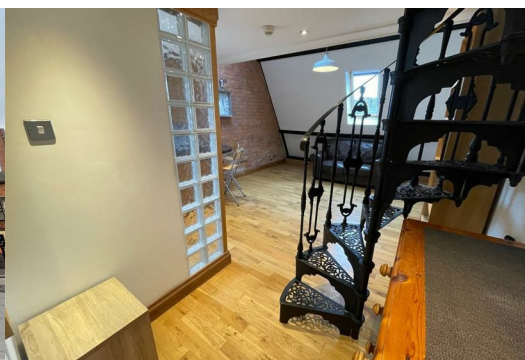
Leicester, LE1 6RS

£750



A superb and stylish furnished one bedroom duplex apartment in the highly desirable New Walk Conservation area of Leicester City Centre. The property is situated on the door step to the New Walk and City Centre as well as being located in the city the property comes with permit parking.

This wonderful property comprises of entrance hall, open plan living area with kitchen offering electric hob, electric oven and extractor fan, under counter integrated fridge and washing machine. To the first floor there is a double bedroom and 3 piece ensuite off the bedroom.



Open Plan Living Area 16'6" x 12'6" (5.031 x 3.828)

Lounge Area: Ceiling spot lights, ceiling light point, sofa, electric heater, TV point and ethernet points, wood flooring, shelving units, draw unit, clock and mirror.

Kitchen Area: Ceiling spot lights, fully fitted kitchen offering base and wall cupboards, rolled edge worktop with sink and drainer, hot and cold mixer tap, integrated fridge, electric hob, electric oven and extractor fan, washing machine, wood flooring.

Bedroom 1 12'5" x 11'0" (3.797 x 3.354)

Ceiling light point, electric heater, double bed, built in wardrobe with chest of draws, Velux window and carpeted flooring.

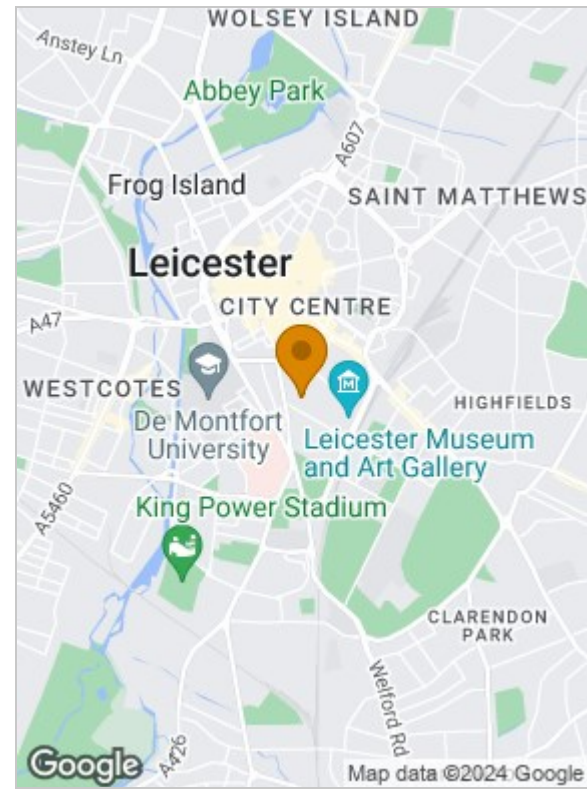
En suite 4'1" x 5'7" (1.266 x 1.712)

Ceiling spot light points, 3 piece suite with shower cubical, wash hand basin with storage unit below, low level flush toilet, extractor fan and tiled flooring.

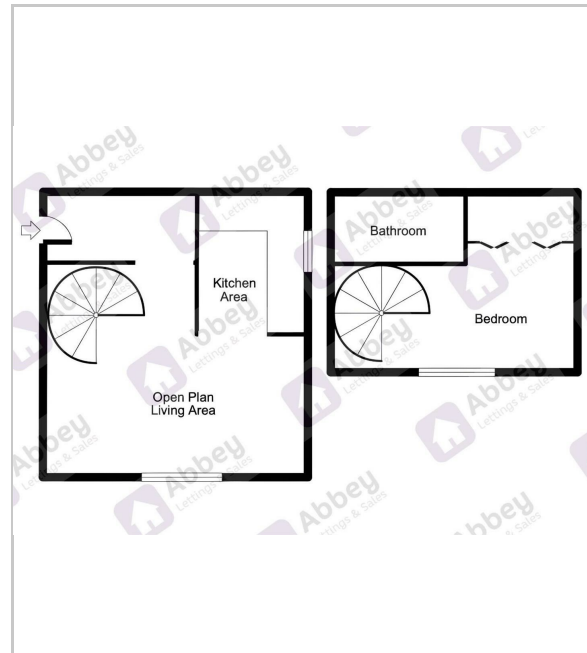
Externally

To the front of the property there is permit holder parking.

Area Map



Floor Plans



Energy Efficiency Graph

