



**Price**

**£1,700 PCM**

Fees Apply



Available 31/12/25

**Loose Road Maidstone  
ME15**

*Wards*  
Helping you move forwards



## Main Features

- Three Bedroom Family Home
- Alternative Deposit Option Available
- Video Walk Available
- Gated Development With Off Road Parking
- En Suite & Cloakroom
- Fully Equipped Kitchen



**Deposit required is £1,961.54**  
**Maidstone District - Council Tax Band Tax Band D**

Renting a property is a big commitment and we recommend that you visit the local authority website and these websites which offer helpful information and advice about letting

[www.gov.uk/government/publications/how-to-rent](http://www.gov.uk/government/publications/how-to-rent)

[www.gov.uk/private-renting](http://www.gov.uk/private-renting)

[www.wardsofkent.co.uk/renting/tenancy-fees-individuals/](http://www.wardsofkent.co.uk/renting/tenancy-fees-individuals/)

[www.gov.uk/green-deal-energy-saving-measures](http://www.gov.uk/green-deal-energy-saving-measures)

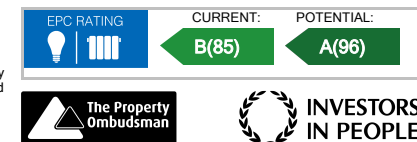
**Call Maidstone 01622 675064 ■ [wardsofkent.co.uk](http://wardsofkent.co.uk)**

IMPORTANT INFORMATION: Please contact our Lettings Team who will confirm the total costs involved in renting this property. For clarification, we wish to inform the prospective tenant that we have prepared these details as a general guide. The agent has not carried out a detailed survey nor tested the services, appliances, or specific fittings (unless otherwise stated), and no warranty can be given as to their condition. All room measurements are taken at floor level. We strongly recommend that all the information which we provide about the property is verified by yourself and your advisers. The contents of this publication are © Wards, 2015. Wards is a trading name of Arun Estates Limited Registered in England No. 2597969

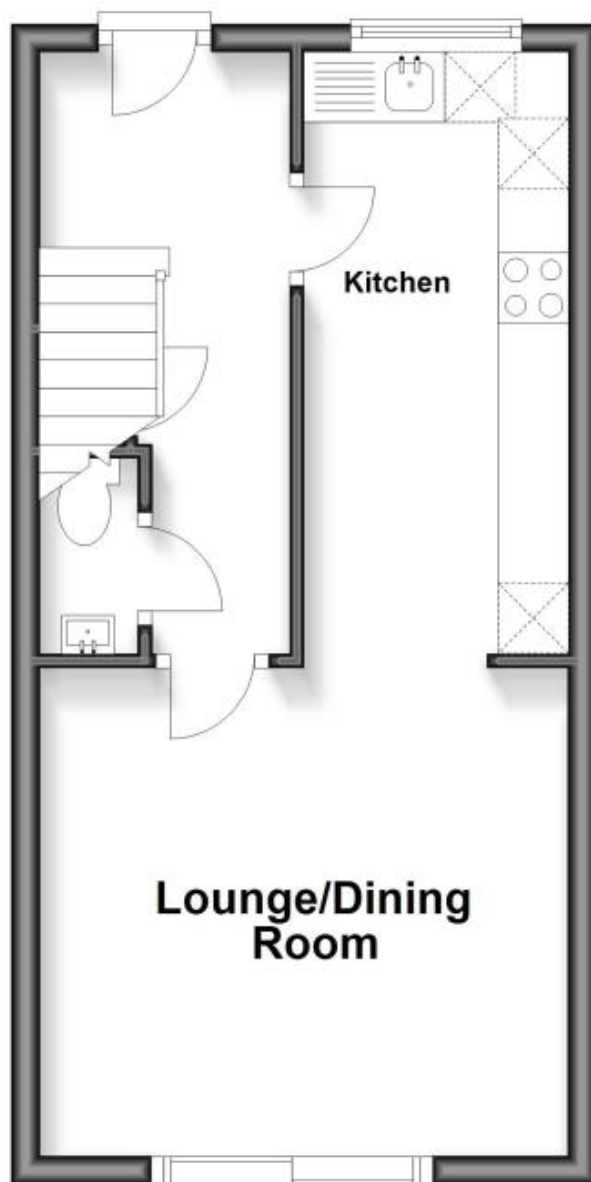
## Accommodation

- Entrance Hallway
- Kitchen 4.28x1.88
- Lounge/Dining Area 3.47x3.75
- Cloakroom 1.67x0.80
- Stairs & 1st Landing
- Bedroom 2 3.72x3.30
- Bedroom 3 3.72x2.68
- Bathroom 2.40x1.85
- Stairs & 2nd Landing
- Master Bedroom 4.54x3.75

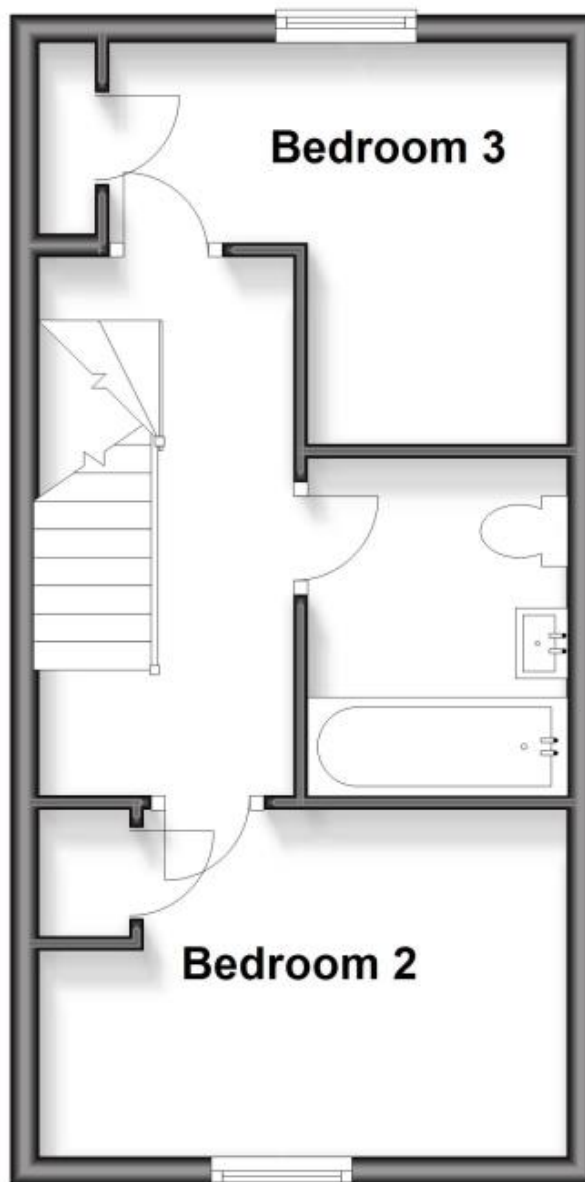
- En Suite Shower Room 2.58x2.43
- Rear Garden
- Two Allocated Parking Spaces



**Ground Floor**



**First Floor**



**Second Floor**

