



Price

£1,300 PCM

Fees Apply



Available 31/12/25

**Sovereigns Way
Marden TN12**

Wards
Helping you move forwards



Main Features

- Two Bedroom Terraced
- Video Walk About Available
- Garden & On Street Parking
- Village Location
- Gas Central Heating
- Newly decorated

Accommodation

- Porch
- Lounge/Diner 4.94m x 3.86m
- Kitchen 3.86m x 2.70m
- Landing
- Bathroom 2.81m x 1.48m
- Bedroom 2 4.13m x 2.27m
- Bedroom 1 3.59m x 2.84m



Deposit required is £1,500.00
Maidstone District - Council Tax Band C

Renting a property is a big commitment and we recommend that you visit the local authority website and these websites which offer helpful information and advice about letting

www.gov.uk/government/publications/how-to-rent

www.gov.uk/private-renting

www.wardsofkent.co.uk/renting/tenancy-fees-individuals/

www.gov.uk/green-deal-energy-saving-measures

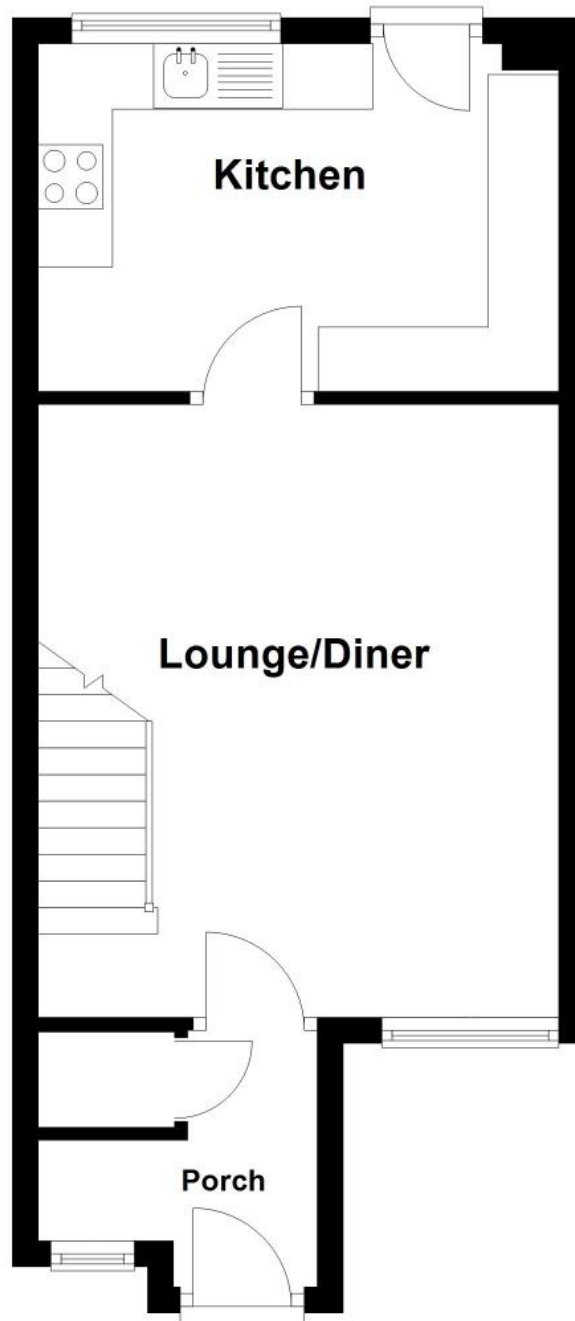
Call Maidstone 01622 675064 ■ wardsofkent.co.uk

IMPORTANT INFORMATION: Please contact our Lettings Team who will confirm the total costs involved in renting this property. For clarification, we wish to inform the prospective tenant that we have prepared these details as a general guide. The agent has not carried out a detailed survey nor tested the services, appliances, or specific fittings (unless otherwise stated), and no warranty can be given as to their condition. All room measurements are taken at floor level. We strongly recommend that all the information which we provide about the property is verified by yourself and your advisers. The contents of this publication are © Wards, 2015. Wards is a trading name of Arun Estates Limited Registered in England No. 2597969



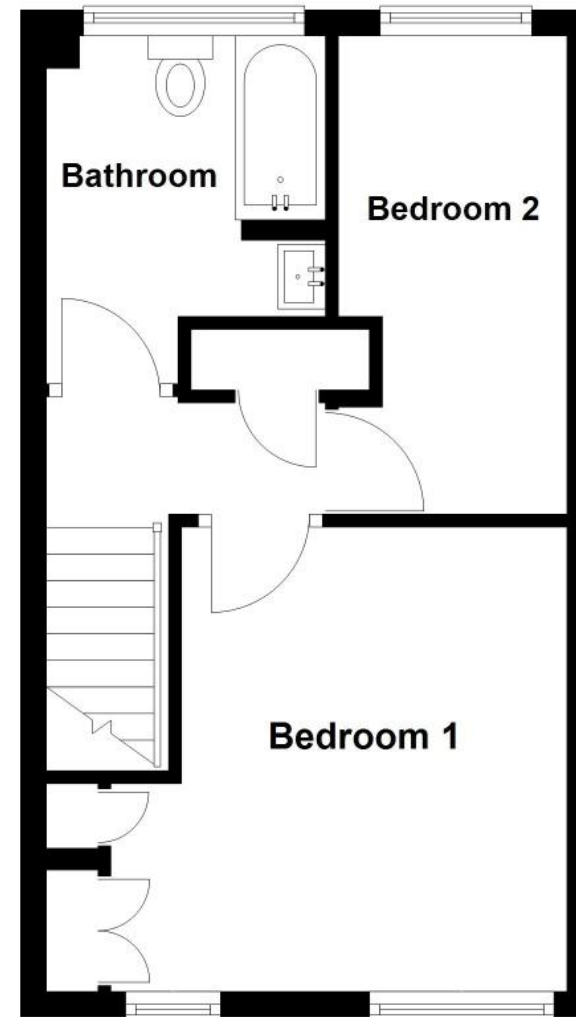
Ground Floor

Approx. 35.4 sq. metres (381.0 sq. feet)



First Floor

Approx. 29.9 sq. metres (322.3 sq. feet)



Total area: approx. 65.3 sq. metres (703.3 sq. feet)