



Price

£1,500 PCM

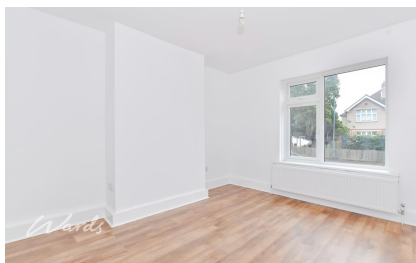
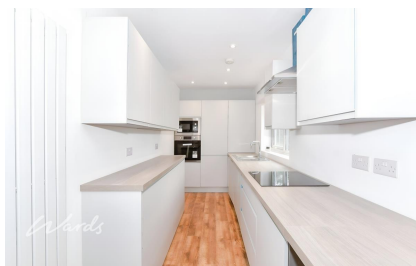
Fees Apply



Available 31/01/26

**Loose Road Maidstone
ME15**

Wards
Helping you move forwards



Main Features

Three Bedroom Family Home

Video Walk Available

Completely Refurbished

Fully Equipped Kitchen

Large Rear Garden



Deposit required is £1,730.77

Maidstone District - Council Tax Band Tax Band C

Renting a property is a big commitment and we recommend that you visit the local authority website and these websites which offer helpful information and advice about letting

www.gov.uk/government/publications/how-to-rent

www.gov.uk/private-renting

www.wardsofkent.co.uk/renting/tenancy-fees-individuals/

www.gov.uk/green-deal-energy-saving-measures

Call Maidstone 01622 675064 ■ wardsofkent.co.uk

IMPORTANT INFORMATION: Please contact our Lettings Team who will confirm the total costs involved in renting this property. For clarification, we wish to inform the prospective tenant that we have prepared these details as a general guide. The agent has not carried out a detailed survey nor tested the services, appliances, or specific fittings (unless otherwise stated), and no warranty can be given as to their condition. All room measurements are taken at floor level. We strongly recommend that all the information which we provide about the property is verified by yourself and your advisers. The contents of this publication are © Wards, 2015. Wards is a trading name of Arun Estates Limited Registered in England No. 2597969

Accommodation

Entrance Hall

Lounge 4.27m x 3.66m

Dining Area 4.27m x 3.38m

Kitchen 4.30m x 1.83m

Basement 3.97m x 3.38m

Landing

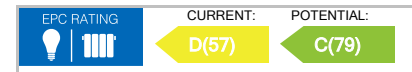
Bedroom 2 4.27m x 3.66m

Bedroom 3 2.47m x 2.47m

Cloakroom 1.55m x 0.64m

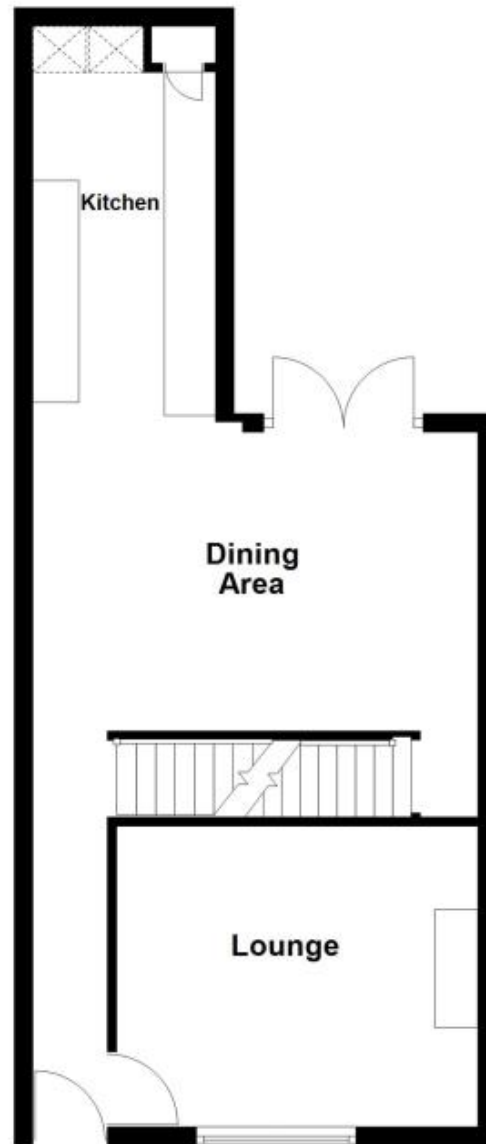
Family Bathroom 2.44m x 1.55m

Bedroom 1 5.80m x 3.66m



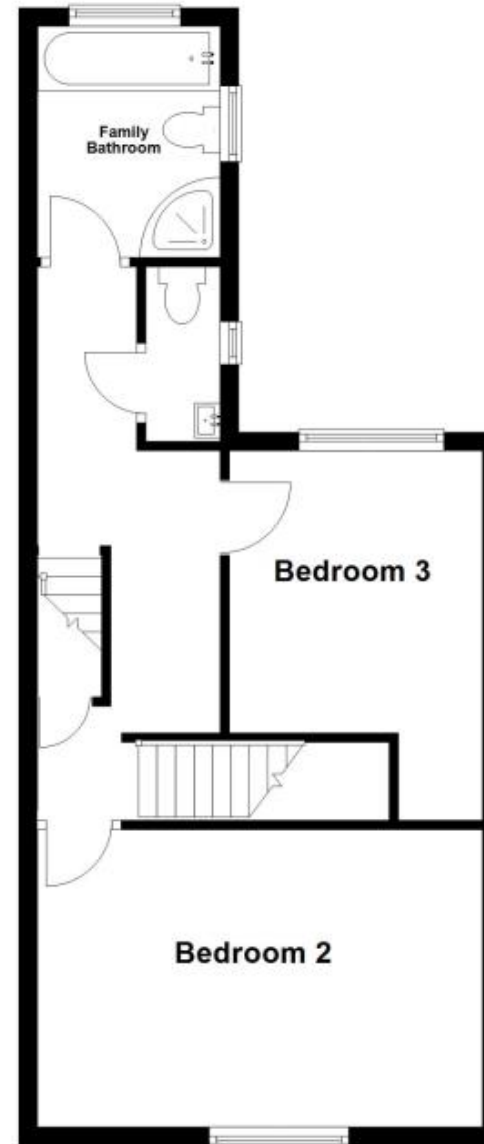
Ground Floor

Approx. 44.9 sq. metres (483.5 sq. feet)



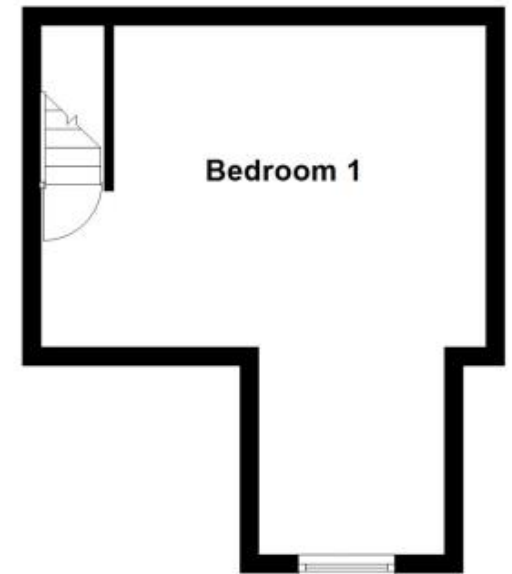
First Floor

Approx. 44.3 sq. metres (477.3 sq. feet)



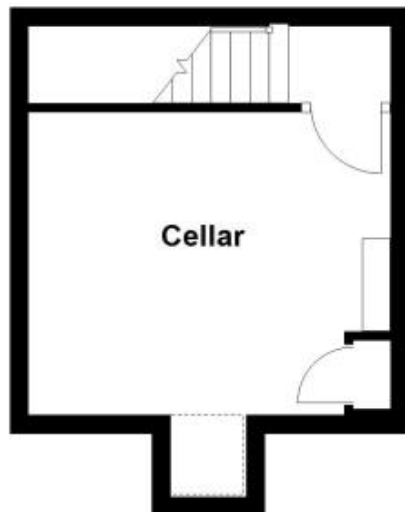
Third Floor

Approx. 21.3 sq. metres (229.2 sq. feet)



Basement

Approx. 17.7 sq. metres (190.9 sq. feet)



Total area: approx. 128.3 sq. metres (1380.9 sq. feet)