



Price

£1,500 PCM

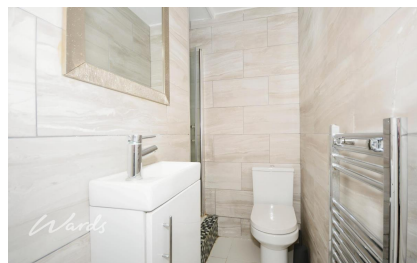
Fees Apply



Available 30/06/25

**Charlton Street
Maidstone ME16**

Wards
Helping you move forwards



Main Features

Spacious House Over 3 Floors

No Deposit Option Available

Video Walk About Available

Fully Equipped Kitchen

Two Bathrooms

Study & Utility Room



Deposit required is £1,730.77

Maidstone District - Council Tax Band Tax Band B

Renting a property is a big commitment and we recommend that you visit the local authority website and these websites which offer helpful information and advice about letting

www.gov.uk/government/publications/how-to-rent

www.gov.uk/private-renting

www.wardsofkent.co.uk/renting/tenancy-fees-individuals/

www.gov.uk/green-deal-energy-saving-measures

Call Maidstone 01622 675064 ■ wardsofkent.co.uk

IMPORTANT INFORMATION: Please contact our Lettings Team who will confirm the total costs involved in renting this property. For clarification, we wish to inform the prospective tenant that we have prepared these details as a general guide. The agent has not carried out a detailed survey nor tested the services, appliances, or specific fittings (unless otherwise stated), and no warranty can be given as to their condition. All room measurements are taken at floor level. We strongly recommend that all the information which we provide about the property is verified by yourself and your advisers. The contents of this publication are © Wards, 2015. Wards is a trading name of Arun Estates Limited Registered in England No. 2597969

Accommodation

Living Room 3.51x3.25

Bedroom 2 3.51x3.25

Stairs To Basement

Kitchen 3.40x2.95

Study 2.91x2.15

Family Bathroom 1.95x1.89

Stairs To First Floor

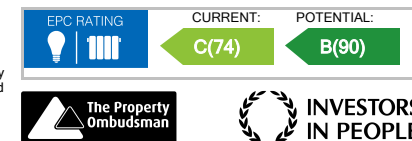
Bedroom 1 3.45x3.25

Bedroom 3 3.25x2.46

Shower Room 1.85x.86

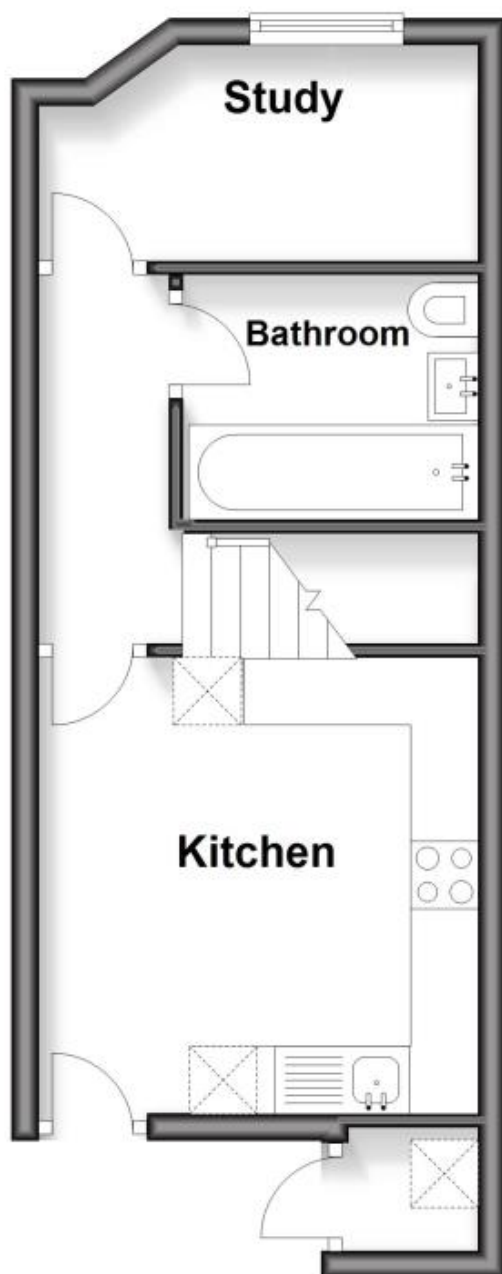
Utility Room

Garden



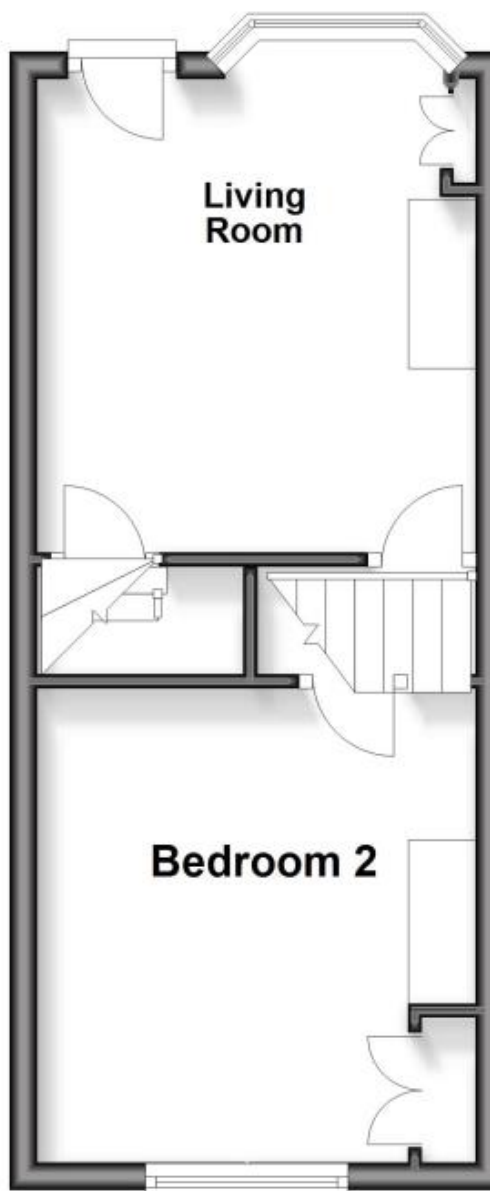
Basement

Approx. 27.9 sq. metres (300.1 sq. feet)



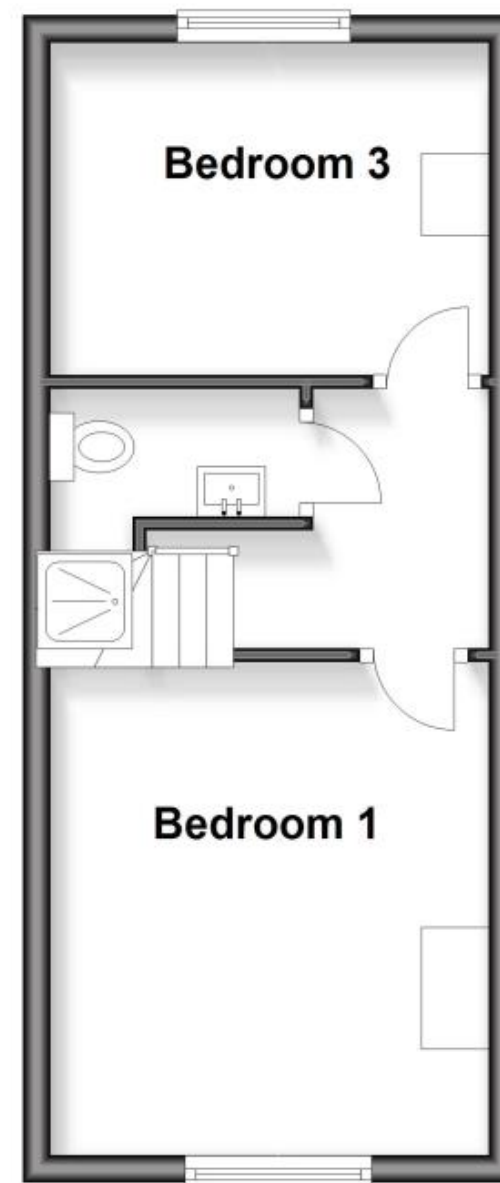
Ground Floor

Approx. 26.2 sq. metres (282.3 sq. feet)



First Floor

Approx. 26.7 sq. metres (287.2 sq. feet)



Total area: approx. 80.8 sq. metres (869.5 sq. feet)