

with  
deposit



## Price

£1,350 PCM

Fees Apply

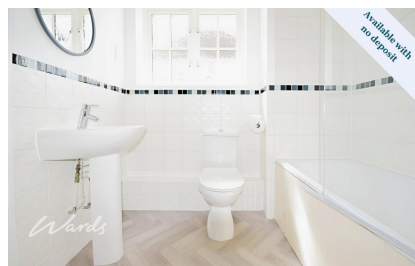


Available 18/07/25

Milton Lane Kings Hill  
ME19

*Wards*

Helping you move forwards



## Main Features

Immaculate One Bedroom Coach house

Video Walk About Available

Private Garden

Fully Equipped Kitchen

Carport With Storage

Gas Central Heating



**Deposit required is £1,557.69**  
Tonbridge and Malling District - Council Tax Band Tax Band C

Renting a property is a big commitment and we recommend that you visit the local authority website and these websites which offer helpful information and advice about letting

[www.gov.uk/government/publications/how-to-rent](http://www.gov.uk/government/publications/how-to-rent)

[www.gov.uk/private-renting](http://www.gov.uk/private-renting)

[www.wardsofkent.co.uk/renting/tenancy-fees-individuals/](http://www.wardsofkent.co.uk/renting/tenancy-fees-individuals/)

[www.gov.uk/green-deal-energy-saving-measures](http://www.gov.uk/green-deal-energy-saving-measures)

**Call Maidstone 01622 675064 ■ [wardsofkent.co.uk](http://wardsofkent.co.uk)**

IMPORTANT INFORMATION: Please contact our Lettings Team who will confirm the total costs involved in renting this property. For clarification, we wish to inform the prospective tenant that we have prepared these details as a general guide. The agent has not carried out a detailed survey nor tested the services, appliances, or specific fittings (unless otherwise stated), and no warranty can be given as to their condition. All room measurements are taken at floor level. We strongly recommend that all the information which we provide about the property is verified by yourself and your advisers. The contents of this publication are © Wards, 2015. Wards is a trading name of Arun Estates Limited Registered in England No. 2597969

## Accommodation

Entrance Porch

Stairs To 1st Floor & Landing

Kitchen/Living Area 6.58m x 5.19m

Bedroom 3.28m x 3.15m

Jack & Jill Bathroom 1.98m x 2.14m

Carport

Garden





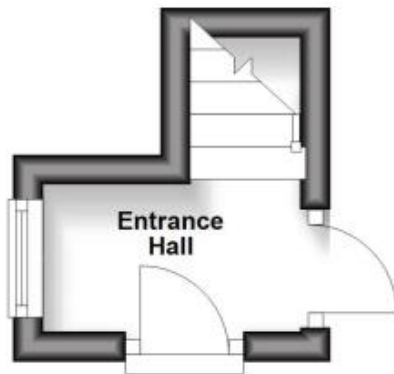
## First Floor

Approx. 43.1 sq. metres (464.4 sq. feet)



## Ground Floor

Approx. 2.5 sq. metres (26.9 sq. feet)



Total area: approx. 45.6 sq. metres (491.3 sq. feet)