

Available with
no deposit



Wards

Price

£1,300 PCM

Fees Apply

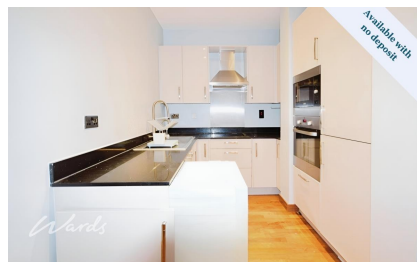
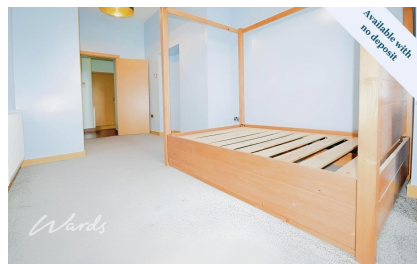
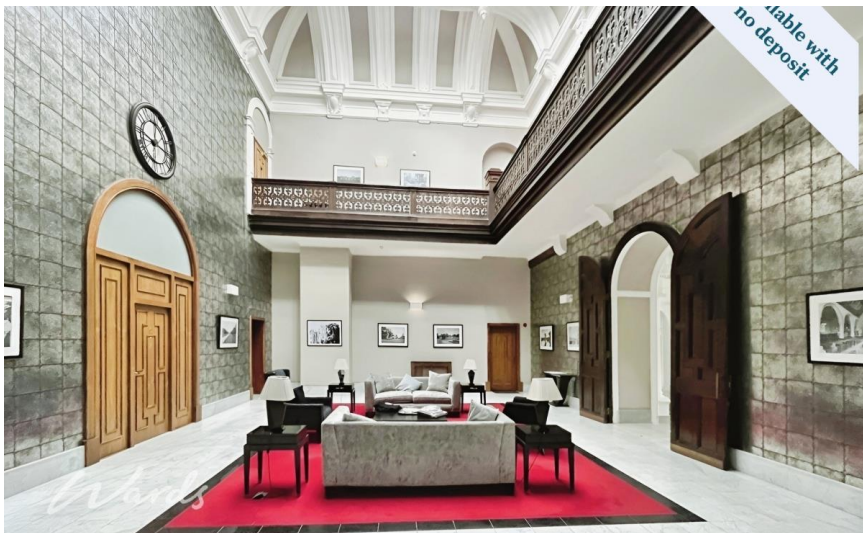


Available 16/06/25

Culpeper Road
Larkfield ME20

Wards

Helping you move forwards



Main Features

One Bedroom Apartment

No Deposit Option Available

Video Walk About Available

Grade II listed

High Ceilings

Part Furnished & Integrated Appliances

Accommodation

Communal Entrance

Internal Hallway 2.58m x 2.20m

Kitchen 3.69m x 1.81m

Living/Dining Room 5.67m x 3.64m

Bedroom 1 5.67m x 2.90m

Bathroom 2.27m x 1.94m

Allocated Off Road Parking



Deposit required is £1,500.00

Tonbridge and Malling District - Council Tax Band Tax Band D

Renting a property is a big commitment and we recommend that you visit the local authority website and these websites which offer helpful information and advice about letting

www.gov.uk/government/publications/how-to-rent

www.gov.uk/private-renting

www.wardsofkent.co.uk/renting/tenancy-fees-individuals/

www.gov.uk/green-deal-energy-saving-measures

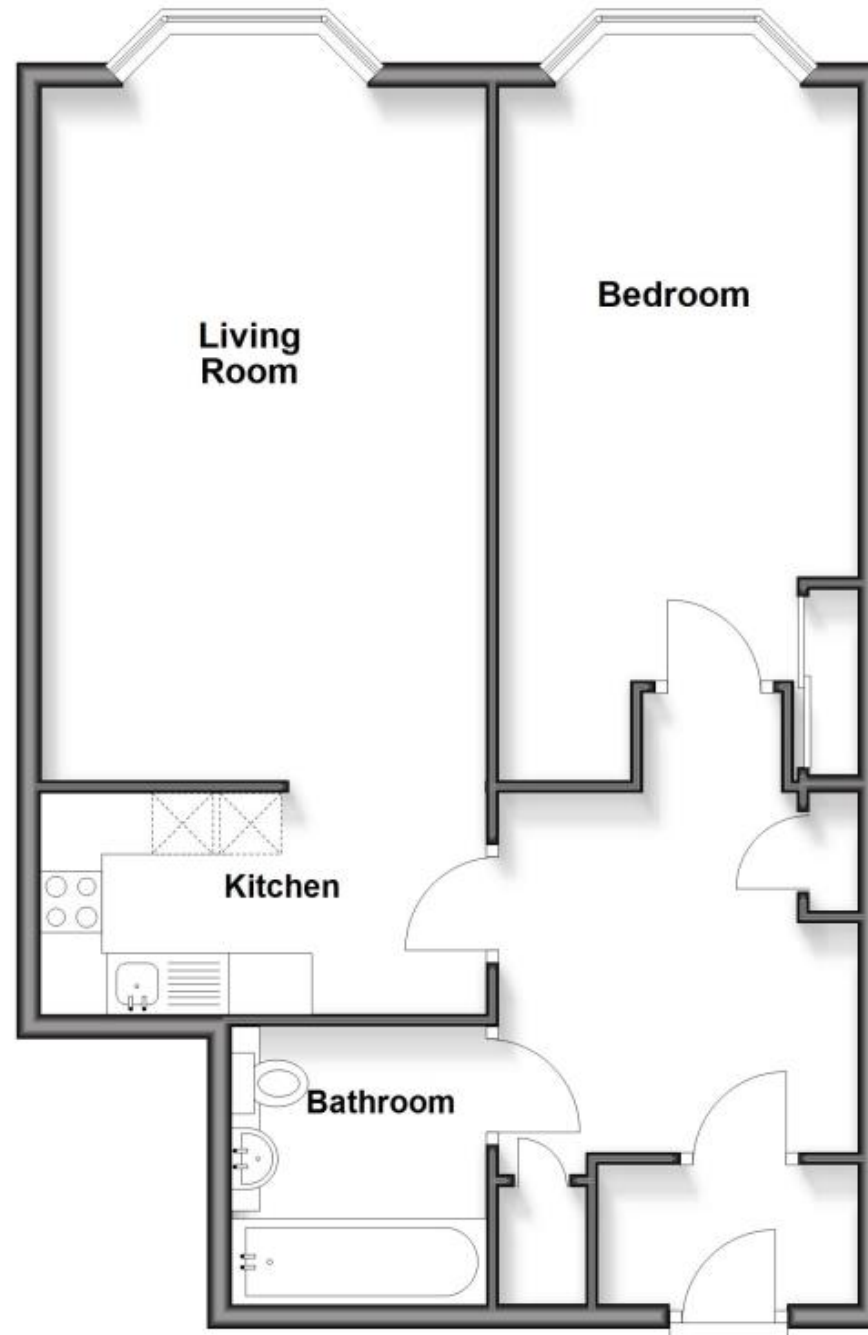
Call Maidstone 01622 675064 ■ wardsofkent.co.uk

IMPORTANT INFORMATION: Please contact our Lettings Team who will confirm the total costs involved in renting this property. For clarification, we wish to inform the prospective tenant that we have prepared these details as a general guide. The agent has not carried out a detailed survey nor tested the services, appliances, or specific fittings (unless otherwise stated), and no warranty can be given as to their condition. All room measurements are taken at floor level. We strongly recommend that all the information which we provide about the property is verified by yourself and your advisers. The contents of this publication are © Wards, 2015. Wards is a trading name of Arun Estates Limited Registered in England No. 2597969



Ground Floor

Approx. 63.3 sq. metres (681.2 sq. feet)



Total area: approx. 63.3 sq. metres (681.2 sq. feet)