

with
deposit



Price

£1,700 PCM

Fees Apply

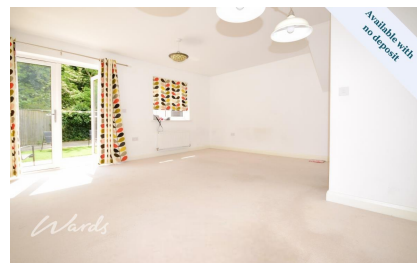


Available 23/06/25

Cuthbert Close
Maidstone ME15

Wards

Helping you move forwards



Main Features

Three Bedroom House

Video Walk about Available

No Deposit Option Available

En-suite & Cloakroom

Modern Kitchen & Bathrooms

Landscaped Garden



Deposit required is £1,961.54
Maidstone District - Council Tax Band N/A

Renting a property is a big commitment and we recommend that you visit the local authority website and these websites which offer helpful information and advice about letting

www.gov.uk/government/publications/how-to-rent

www.gov.uk/private-renting

www.wardsofkent.co.uk/renting/tenancy-fees-individuals/

www.gov.uk/green-deal-energy-saving-measures

Call Maidstone 01622 675064 ■ wardsofkent.co.uk

IMPORTANT INFORMATION: Please contact our Lettings Team who will confirm the total costs involved in renting this property. For clarification, we wish to inform the prospective tenant that we have prepared these details as a general guide. The agent has not carried out a detailed survey nor tested the services, appliances, or specific fittings (unless otherwise stated), and no warranty can be given as to their condition. All room measurements are taken at floor level. We strongly recommend that all the information which we provide about the property is verified by yourself and your advisers. The contents of this publication are © Wards, 2015. Wards is a trading name of Arun Estates Limited Registered in England No. 2597969

Accommodation

Entrance Hallway

Kitchen/Breakfast Room 4.11x3.05

Living/Dining Room 5.21x4.90

Cloakroom

Stairs & Landing

Bedroom 1 3.90x3.32

En Suite Shower Room 3.32x1.18

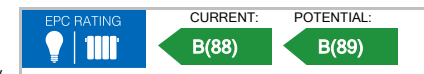
Bedroom 2 3.50x3.00

Bedroom 3 2.60x2.10

Bathroom 3.04x1.84

Garden

Allocated Parking



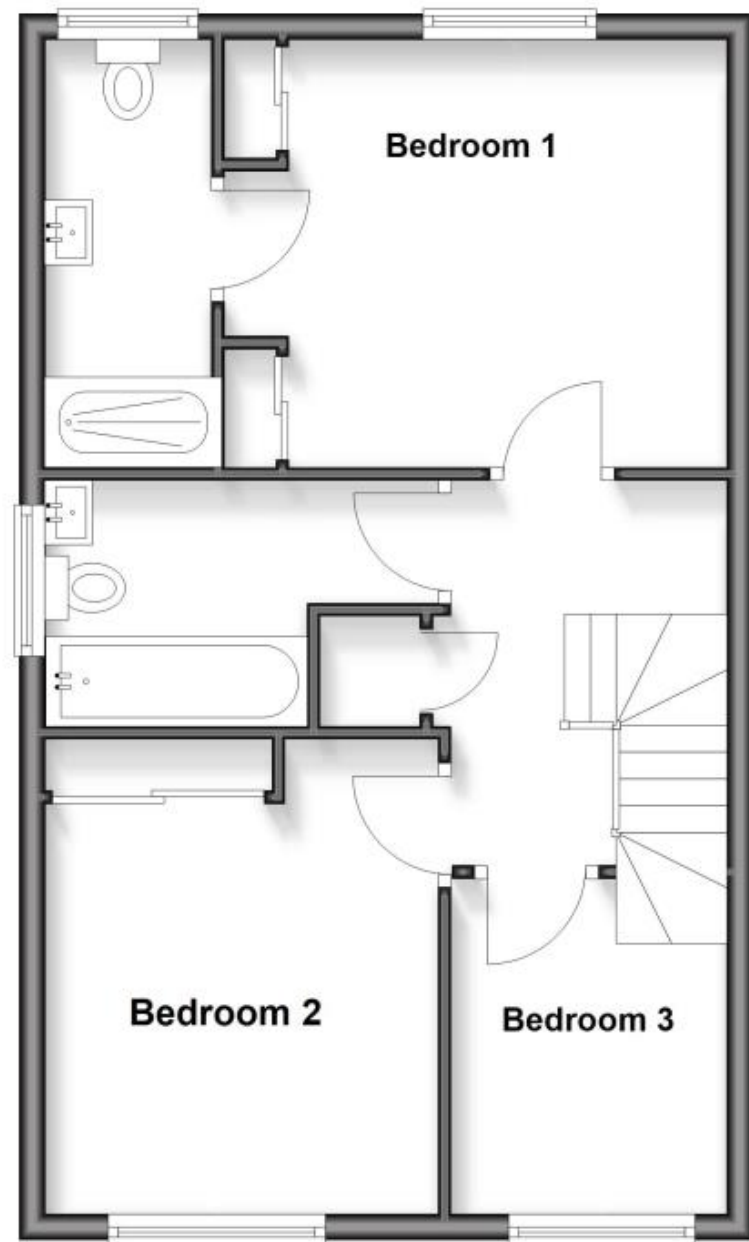
Ground Floor

Approx. 48.8 sq. metres (525.3 sq. feet)



First Floor

Approx. 48.2 sq. metres (518.7 sq. feet)



Total area: approx. 97.0 sq. metres (1044.0 sq. feet)