



**Price**

**£800 PCM**

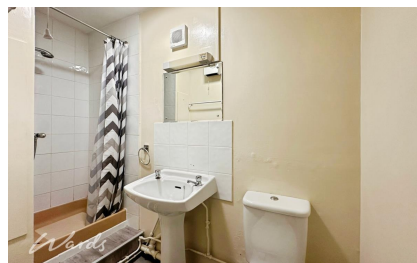
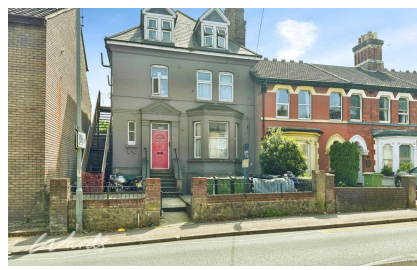
Fees Apply



Available 09/05/25

**Tonbridge Road  
Maidstone ME16**

*Wards*  
Helping you move forwards



## Main Features

- Self Contained Studio
- Video Walk About Available
- Access To Shared Garden
- Well Presented
- Rent Includes Utility Bills
- Easy Access To Town Centre



**Deposit required is £923.08**  
**Maidstone District - Council Tax Band Tax Band A**

Renting a property is a big commitment and we recommend that you visit the local authority website and these websites which offer helpful information and advice about letting

[www.gov.uk/government/publications/how-to-rent](http://www.gov.uk/government/publications/how-to-rent)

[www.gov.uk/private-renting](http://www.gov.uk/private-renting)

[www.wardsofkent.co.uk/renting/tenancy-fees-individuals/](http://www.wardsofkent.co.uk/renting/tenancy-fees-individuals/)

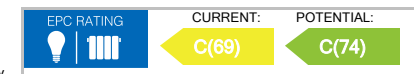
[www.gov.uk/green-deal-energy-saving-measures](http://www.gov.uk/green-deal-energy-saving-measures)

**Call Maidstone 01622 675064 ■ [wardsofkent.co.uk](http://wardsofkent.co.uk)**

IMPORTANT INFORMATION: Please contact our Lettings Team who will confirm the total costs involved in renting this property. For clarification, we wish to inform the prospective tenant that we have prepared these details as a general guide. The agent has not carried out a detailed survey nor tested the services, appliances, or specific fittings (unless otherwise stated), and no warranty can be given as to their condition. All room measurements are taken at floor level. We strongly recommend that all the information which we provide about the property is verified by yourself and your advisers. The contents of this publication are © Wards, 2015. Wards is a trading name of Arun Estates Limited Registered in England No. 2597969

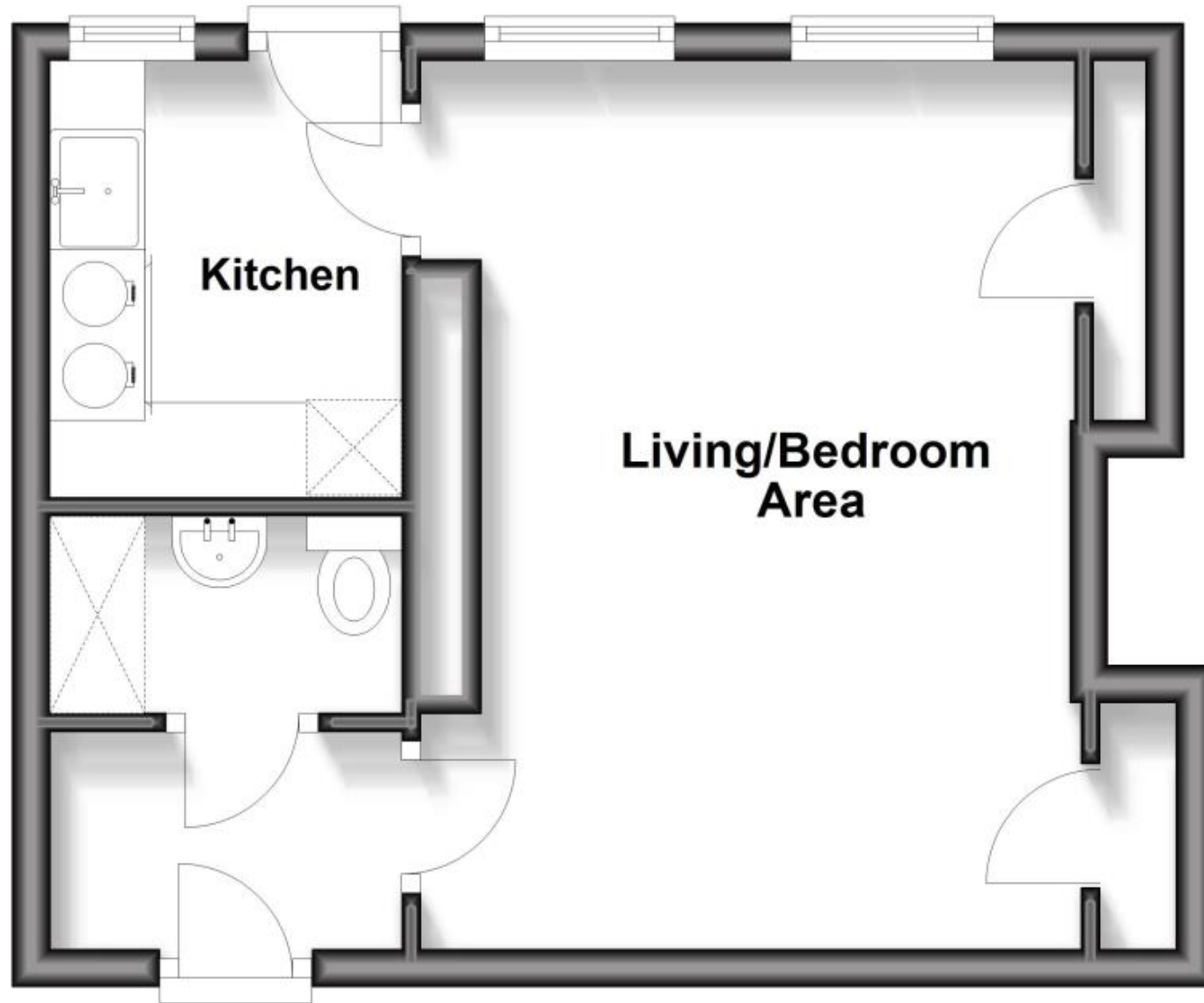
## Accommodation

- Communal Stairs & Hallway
- Living/Bedroom Area 4.50x3.40
- Kitchen 2.30x1.85
- Bathroom 2.63x1.07
- Communal Garden



# Basement Floor

Approx. 24.6 sq. metres (265.3 sq. feet)



Total area: approx. 24.6 sq. metres (265.3 sq. feet)