



Price

£1,075 PCM

Fees Apply

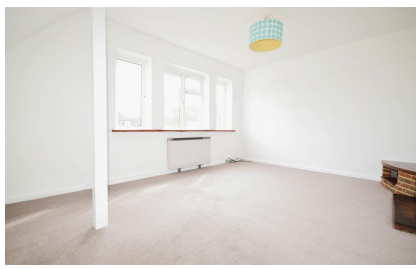


Available 30/04/24

**Forge Meadows
Ashford TN27**

Wards

Helping you move forwards



Main Features

- **Two Double Bedroom Maisonette**
- **New Carpets**
- **Video Walk About Available**
- **Recently Redecorated**
- **Village Location**
- **Cute And Quaint**

Accommodation

Boot Room 4.27m x 1.04m

Entrance Hall

Kitchen 4.73m x 2.54m

Lounge 4.70m x 3.53m

Bathroom 2.06m x 1.69m

Bedroom 2 3.97m x 3.08m

Bedroom 1 4.02m x 3.66



Deposit required is £1,240.38
Maidstone District - Council Tax Band N/A

Renting a property is a big commitment and we recommend that you visit the local authority website and these websites which offer helpful information and advice about letting

www.gov.uk/government/publications/how-to-rent

www.gov.uk/private-renting

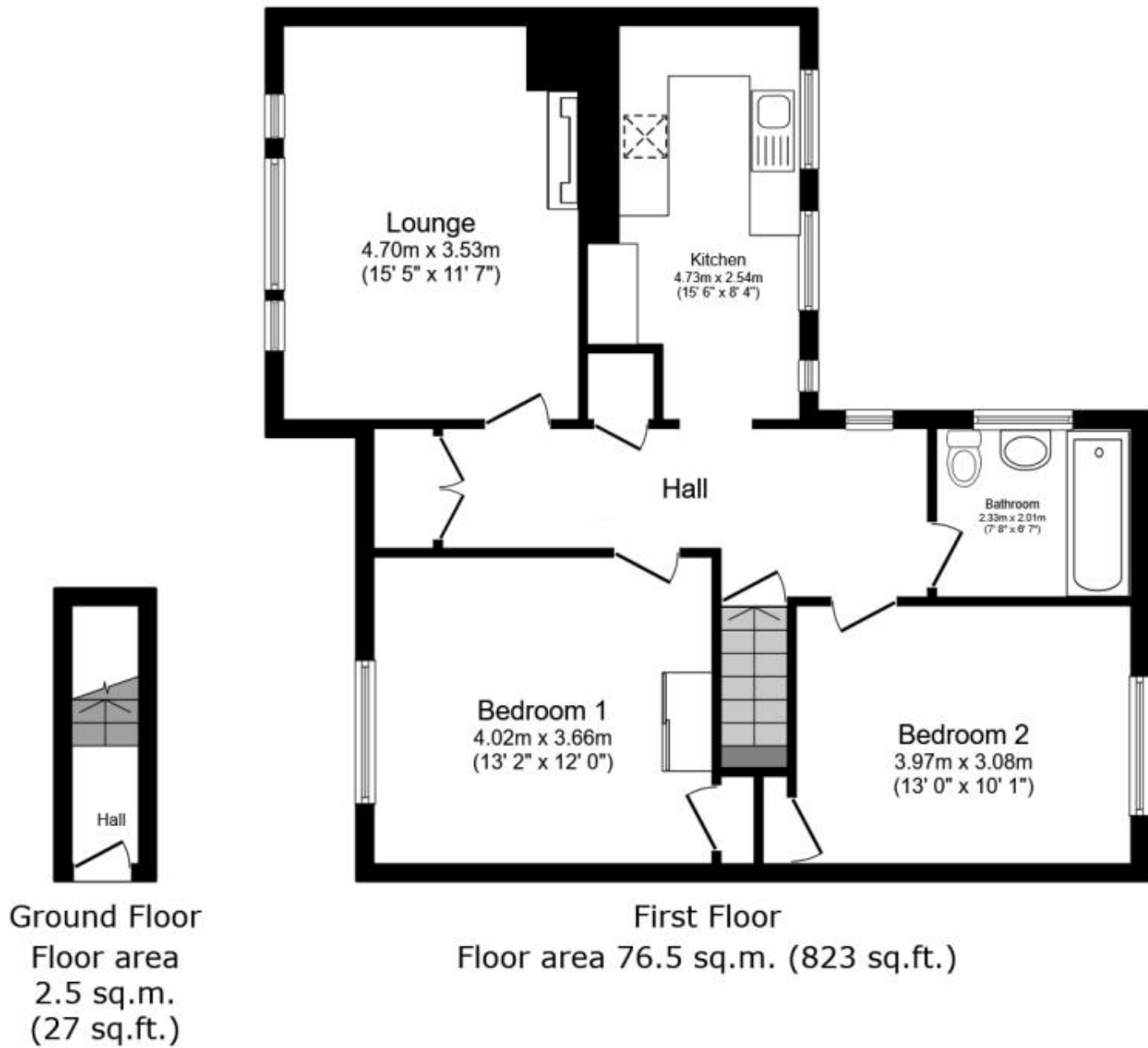
www.wardsofkent.co.uk/renting/tenancy-fees-individuals/

www.gov.uk/green-deal-energy-saving-measures

Call Maidstone 01622 675064 ■ wardsofkent.co.uk

IMPORTANT INFORMATION: Please contact our Lettings Team who will confirm the total costs involved in renting this property. For clarification, we wish to inform the prospective tenant that we have prepared these details as a general guide. The agent has not carried out a detailed survey nor tested the services, appliances, or specific fittings (unless otherwise stated), and no warranty can be given as to their condition. All room measurements are taken at floor level. We strongly recommend that all the information which we provide about the property is verified by yourself and your advisers. The contents of this publication are © Wards, 2015. Wards is a trading name of Arun Estates Limited Registered in England No. 2597969





TOTAL: 78.9 sq.m. (850 sq.ft.)

This floor plan is for illustrative purposes only. It is not drawn to scale. Any measurements, floor areas (including any total floor area), openings and orientations are approximate. No details are guaranteed, they cannot be relied upon for any purpose and do not form any part of any agreement. No liability is taken for any error, omission or misstatement. A party must rely upon its own inspection(s). Powered by www.Propertybox.io