



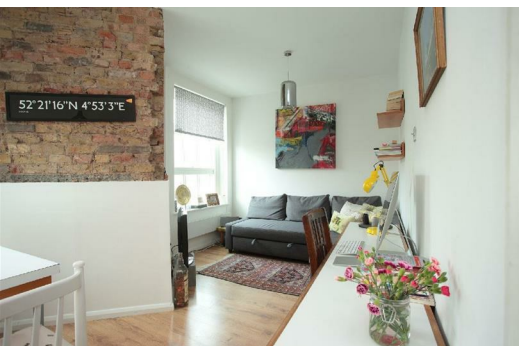
Wilmot Street, London, , E2 0BU
£3,000 PCM

Elms Estates are delighted to offer To Let this Rarely Available Three Bedroom Apartment located in this Beautiful Victorian Building just moments from Bethnal Green Station.

The property is situated on the ever popular Wilmot Street just off Bethnal Green Road. A delightful street with numerous Green Spaces such as Weaver's Fields, Bethnal Green Gardens, Museum Gardens, St Bartholmew Gardens within easy reach. It has Excellent Transport Links such as Bethnal Green Underground & Overground Stations close by. It is a short walk to the famous Brick Lane & Shoreditch High Street and close to many superb Local Amenities and an abundance of Shops, Restaurants and Cafes.

Internally the property has a modern open plan kitchen/lounge with exposed brickwork, Three bedrooms and modern bathroom. The property is to move in to from 30 August 2024 onwards.

For more information or to arrange a viewing please do not hesitate to call in and speak with one of our Property Consultants.

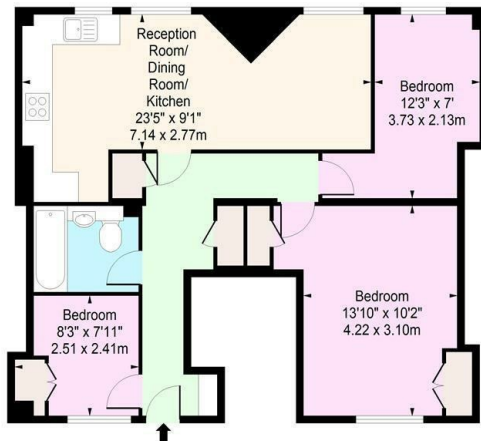


- Exterior
- Lounge Area
- Kitchen Area
- Bathroom
- Bedroom One
- Bedroom Two
- Bedroom Three

Material Information
 Deposit: £3,692.30
 Length Of Tenancy: One Year
 Council Tax Band: D



Wilmot Street, E2
 Approx. Gross Internal Area 709 Sq Ft - 65.87 Sq M



First Floor
 Floor Area 709 Sq Ft - 65.87 Sq M
 For Illustration Purposes Only - Not To Scale
 www.londonpropertyassessments.co.uk

Energy Efficiency Rating		Environmental Impact (CO ₂) Rating	
Current	Potential	Current	Potential
Very energy efficient - lower running costs (92 plus) A (81-91) B (69-80) C (55-68) D (39-54) E (21-38) F (1-20) G Not energy efficient - higher running costs		Very environmentally friendly - lower CO ₂ emissions (92 plus) A (81-91) B (69-80) C (55-68) D (39-54) E (21-38) F (1-39) G Not environmentally friendly - higher CO ₂ emissions	
	81		66
	62		39
England & Wales		England & Wales	
EU Directive 2002/91/EC		EU Directive 2002/91/EC	