



**Donegal House, London, , E1 5QR**  
**£495,000**

Elms Estates are delighted to be offering to the market For Sale this Three Bedroom Maisonette arranged over the Ground and First Floor with a Private Garden.

Donegal House is located directly off of Cambridge Heath Road and within a short walk of either Whitechapel (District and Hammersmith & City lines) Tube Station or Bethnal Green (Central Line) Tube Station and having multiple bus routes in to the City, West End and beyond.

In addition to the fantastic transport links, Donegal is situated just up the road from Whitechapel's famous Street Market with a easy access to local amenities, with Bethnal Green Gardens, a Sainsbury's and Gym just a few minutes walk away.

For more information or to arrange a viewing please do not hesitate to call in and speak with one of our Property Consultants.



## Reception

16'1" x 11'2" (4.90m x 3.40m)

## Kitchen

8'10" x 11'1" (2.70 x 3.40)

## Bedroom One

14'5" x 8'10" (4.40 x 2.70)

## Bedroom Two

14'1" x 8'10" (4.30 x 2.70)

## Bedroom Three

11'1" x 7'10" (3.40 x 2.40)

## Bathroom

## WC

## Garden

## Material Information

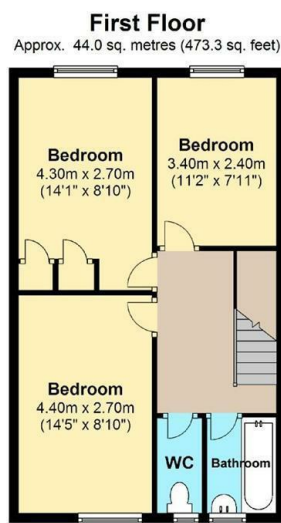
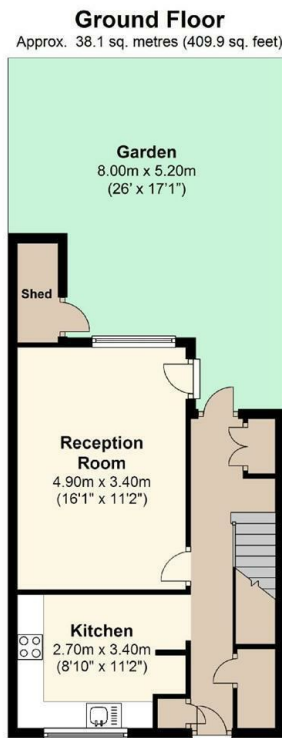
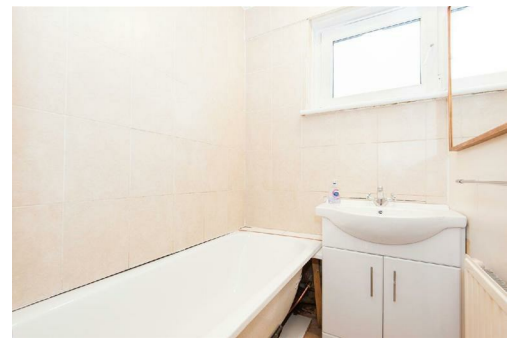
Tenure: Leasehold

Length Of Lease: Approx 107 Years remaining

Annual Ground Rent £10.00 Per year

Annual Service Charge: £2,010.49 Per year

Council Tax Band: C



Total area: approx. 82.1 sq. metres (883.2 sq. feet)  
For illustration purposes only - not to scale

