



Sunlight Square  
London, E2 6LD

£425,000

  
elms  
ESTATES



Elms Estates are delighted to bring to the market this spacious two-bedroom apartment, located on the second floor of a sought-after, secure gated development that boasts the added benefit of an allocated parking space. Perfectly positioned, the property is just a short stroll from Bethnal Green Tube Station (Central Line), making it ideal for city commuters.

Sunlight Square is situated just off Cambridge Heath Road, this exclusive development is surrounded by green spaces, including Weaver's Fields, Bethnal Green Gardens, Museum Gardens, and St Bartholomew Gardens offering a tranquil retreat within the city. The central location ensures excellent transport links, with Bethnal Green Underground and Overground Stations nearby, alongside the Elizabeth Line at Whitechapel, providing swift access across London. For leisure and entertainment, you're just a short walk away from the vibrant Brick Lane, Shoreditch High Street, and a wide array of shops, restaurants, and cafes.

The property offers bright and spacious accommodation throughout, featuring a Juliet balcony to the lounge which is open plan with the kitchen, two double bedrooms and a good sized bathroom.

Sunlight Square is offered to the market on a CHAIN FREE basis and really is one to not be missed.

An early internal inspection is highly recommended in order to avoid disappointment.



## Reception/Kitchen

17'8" x 17'0" (5.4 x 5.2)



## Bedroom One

10'9" x 9'10" (3.3 x 3.0)



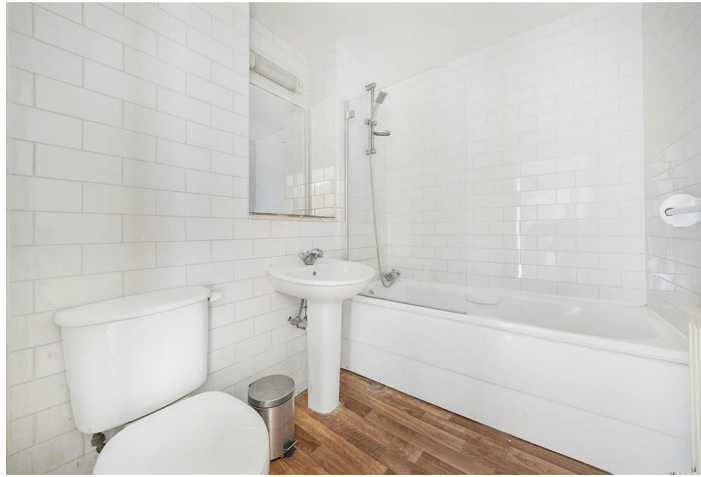
## Bedroom Two

9'10" x 8'10" (3.0 x 2.7 )



## Bathroom

6'10" x 5'6" (2.1 x 1.7)



### Material Information

Tenure: Leasehold

Length Of Lease: Approx 98 Years remaining

Annual Service Charge £3,144.42 Per Year

Annual Ground Rent: £375.00 Per Year

Council Tax Band: C





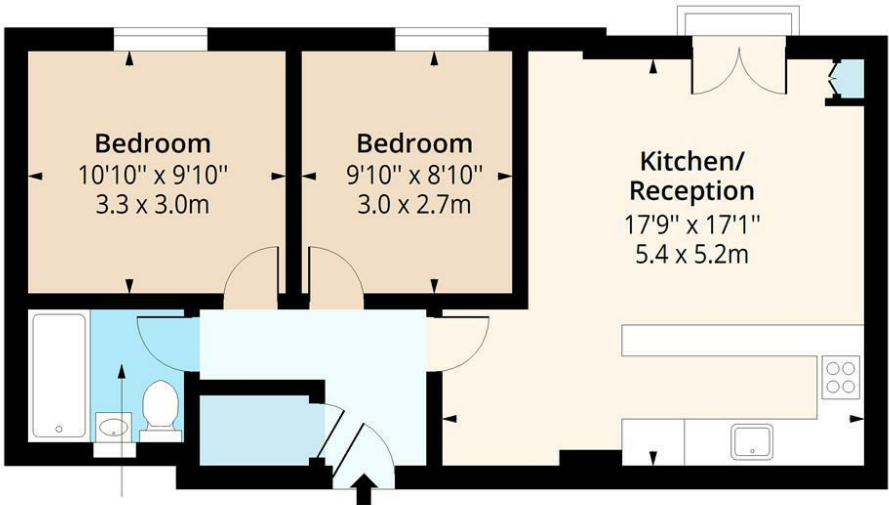






# Sunlight Square, E2

Approx. Gross Internal Area 599 Sq Ft - 55.65 Sq M



6'11" x 5'7"  
2.1 x 1.7m

**Second Floor**  
Floor Area 599 Sq Ft - 55.65 Sq M



Measured according to RICS IPMS2. Floor plan is for illustrative purposes only and is not to scale. Every attempt has been made to ensure the accuracy of the floor plan shown, however all measurements, fixtures, fittings and data shown are an approximate interpretation for illustrative purposes only. 1 sq m = 10.76 sq feet.

lpaplus.com

Date: 16/1/2026

