



Wilmot Street
London, E2 0BU
£2,250 PCM


elms
ESTATES

Elms Estates are pleased to offer for Let this two Double Bedroom Apartment located on the second Floor of this Beautiful Victorian Building.

The property is situated just off Bethnal Green Road on a delightful street with numerous Green Spaces such as Weaver's Fields, Bethnal Green Gardens, Museum Gardens, St Bartholmew Gardens within easy reach. It has Excellent Transport Links such as Bethnal Green Underground & Overground Stations close by. It is a short walk to the famous Brick Lane & Shoreditch High Street and close to many superb Local Amenities and an abundance of Shops, Restaurants and Cafes.

Internally the property benefits from two double bedrooms, kitchen/diner, good sized bathroom and a separate office/study.

AVAILABLE NOW

For more information or to arrange a viewing please do not hesitate to call in and speak with one of our Property Consultants.



Reception/Kitchen

16'7" x 12'4" (5.05m x 3.76m)



Bedroom One

13'2" x 12'3" (4.01m x 3.73m)



Bedroom Two

13'9" x 10'0" (4.19m x 3.05m)



Bathroom



Material Information

Deposit: £2,596.15

Length Of Tenancy: One Year

Council Tax Band: D

Study

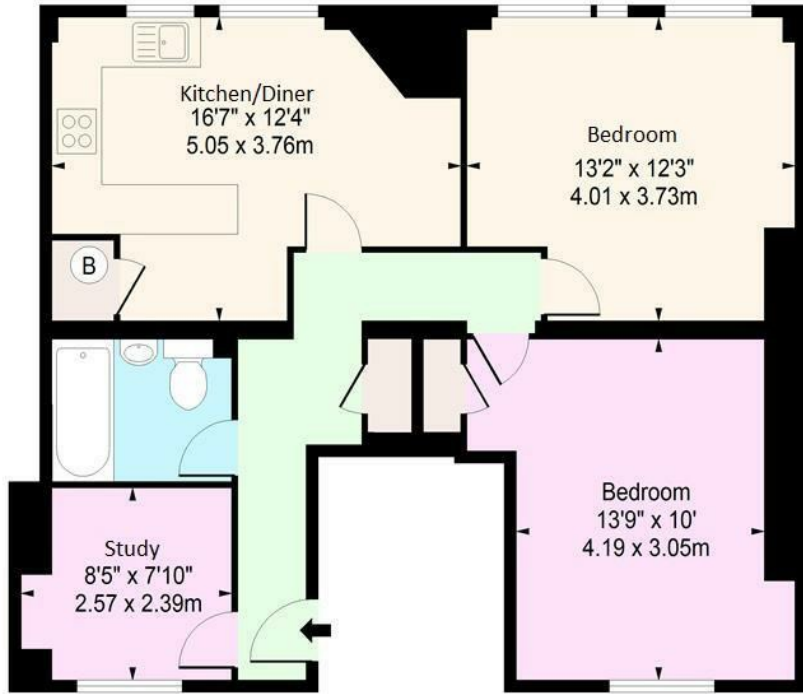
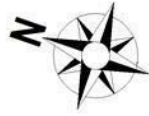
8'5" x 7'10" (2.57 x 2.39)





Wilmot Street, E2

Approx. Gross Internal Area 714 Sq Ft - 66.33 Sq M



Second Floor

Floor Area 714 Sq Ft - 66.33 Sq M

For Illustration Purposes Only - Not To Scale
www.londonpropertyassessments.co.uk

