



Ellsworth Street
London, E2 0AU

£3,400 PCM


elms
ESTATES

Elms Estates are absolutely delighted to offer to LET this Four bedroom maisonette with its very own garden.

Ellsworth Street is located in the heart of Bethnal Green within walking distance to Bethnal Green Overground & Overground station but also with multiple bus routes in to the City, West End and beyond and additionally the Glorious Victoria Park is within a short walk and offers Beautiful Open Spaces and Miles of Scenic Walks. The Relaxed, Cool Feel of Victoria Park Farmers Market will make for wonderful lazy Sunday morning strolls. This property really is set within the Heart of the East End with easy access to all of the Restaurants, Bars, Shops, Markets, Gyms, Parks, Galleries and Museums this Exciting Area has on offer.

Internally the property offers a spacious open plan living/kitchen area, Four Bedrooms, Bathroom and its very own garden. (The photos were of the property before the current tenancy)

The property is available to move in to Immediately

An early internal inspection is highly recommended in order to avoid disappointment.



Lounge/Kitchen

16'4" x 11'5" (5.0 x 3.5)



Bedroom One

14'1" x 9'10" (4.3 x 3.0)



WC



Bedroom Four

8'6" x 8'2" (2.6 x 2.5)



Material Information

Deposit: £3,923.07
Length Of Tenancy: One Year
Council Tax Band: C

Bedroom Two

12'1" x 10'5" (3.7 x 3.2)



Bathroom



Bedroom Three

13'9" x 7'10" (4.2 x 2.4)

Garden

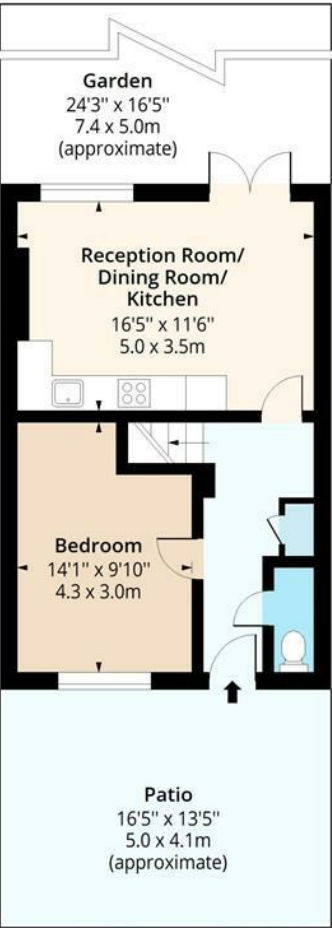




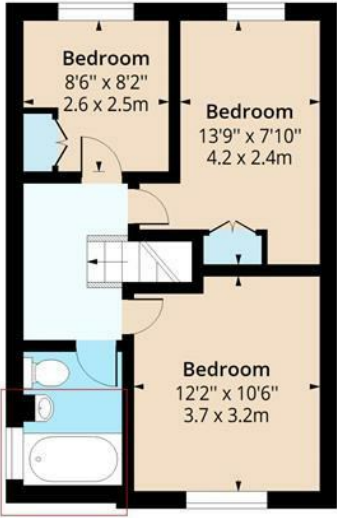
Ellsworth Street, E2

Approx. Gross Internal Area 888 Sq Ft - 82.50 Sq M (Excluding Patio)

Approx. Gross Internal Area 1140 Sq Ft - 105.91 Sq M (Including Patio)



Ground Floor
Floor Area 445 Sq Ft - 41.34 Sq M



First Floor
Floor Area 443 Sq Ft - 41.15 Sq M

Floor plan is for illustrative purposes only and is not to scale. Every attempt has been made to ensure the accuracy of the floor plan shown, however all measurements, fixtures, fittings and data shown are an approximate interpretation for illustrative purposes only.

lpaplus.com



Energy Efficiency Rating		
	Current	Potential
Very energy efficient - lower running costs		
(92 plus) A		
(81-91) B		
(69-80) C		
(55-68) D		
(39-54) E		
(21-38) F		
(1-20) G		
Not energy efficient - higher running costs		
England & Wales		
EU Directive 2002/91/EC		

Environmental Impact (CO ₂) Rating		
	Current	Potential
Very environmentally friendly - lower CO ₂ emissions		
(92 plus) A		
(81-91) B		
(69-80) C		
(55-68) D		
(39-54) E		
(21-38) F		
(1-20) G		
Not environmentally friendly - higher CO ₂ emissions		
England & Wales		
EU Directive 2002/91/EC		