



Wilmot Street, London, , E2 0BU £1,500 PCM

Elms Estates are pleased to offer to the market To Let this Studio Apartment located on the Top Floor of this Beautiful Victorian Building.

The property is situated just off Bethnal Green Road on a delightful street with numerous Green Spaces such as Weaver's Fields, Bethnal Green Gardens, Museum Gardens, St Bartholmew Gardens within easy reach. It has Excellent Transport Links such as Bethnal Green Underground & Overground Stations close by. It is a short walk to the famous Brick Lane & Shoreditch High Street and close to many superb Local Amenities and an abundance of Shops, Restaurants and Cafes.

Internally the property has a spacious reception/bedroom with modern fitted kitchen and contemporary shower room.

The property is Available 7 August 2025 onwards.

For more information or to arrange a viewing please do not hesitate to call in and speak with one of our Property Consultants.



Reception/Bedroom
14'9" x 12'9" (4.5 x 3.9)

Kitchen
7'2" x 7'2" (2.2 x 2.2)

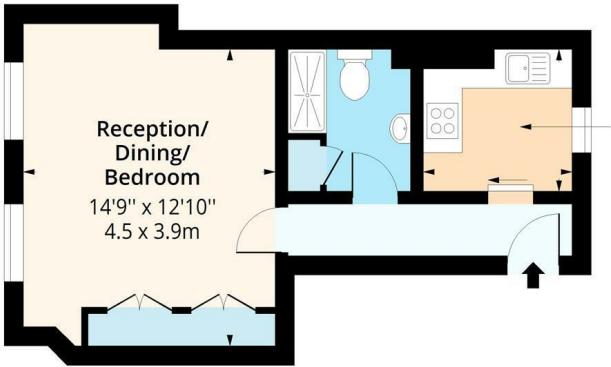
Shower Room

Material Information

Deposit: £1,730.76
Length Of Tenancy: One Year
Council Tax Band: B



Wilmot Street, E2
Approx. Gross Internal Area 359 Sq Ft - 33.35 Sq M



Kitchen
7'3" x 7'3"
2.2 x 2.2m

Third Floor
Floor Area 359 Sq Ft - 33.35 Sq M



Measured according to RICS IPMS2. Floor plan is for illustrative purposes only and is not to scale. Every attempt has been made to ensure the accuracy of the floor plan shown, however all measurements, fixtures, fittings and data shown are an approximate interpretation for illustrative purposes only. 1 sq m = 10.76 sq feet.

lpaplus.com

Date: 15/7/2025

Energy Efficiency Rating		Environmental Impact (CO ₂) Rating	
Current	Potential	Current	Potential
<p>Very energy efficient - lower running costs</p> <p>(92 plus) A</p> <p>(81-91) B</p> <p>(69-80) C</p> <p>(55-68) D</p> <p>(39-54) E</p> <p>(21-38) F</p> <p>(1-20) G</p> <p>Not energy efficient - higher running costs</p>		<p>Very environmentally friendly - lower CO₂ emissions</p> <p>(92 plus) A</p> <p>(81-91) B</p> <p>(69-80) C</p> <p>(55-68) D</p> <p>(39-54) E</p> <p>(21-38) F</p> <p>(1-20) G</p> <p>Not environmentally friendly - higher CO₂ emissions</p>	
	70		
	48		
England & Wales		EU Directive 2002/91/EC	