



Wilmot Street
London, E2 0BU

£2,500 PCM


ESTATES

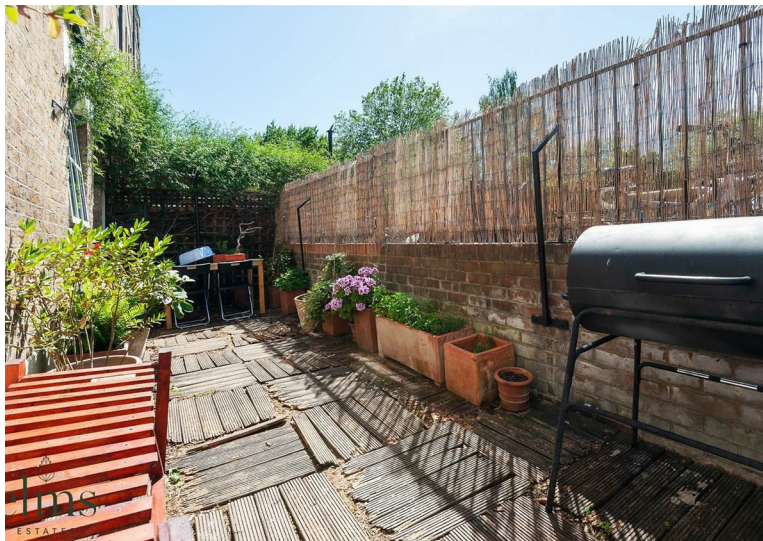
Elms Estates are delighted to bring back to the market To Let this lovely Two Bedroom Ground Floor Apartment with its own rear Garden, situated on the ever popular Wilmot Street located within the Heart of the East End with easy access to all of the Restaurants, Bars, Shops, Markets, Gyms, Parks, Galleries and Museums this Exciting Area has to offer.

The property benefits hugely from having Bethnal Green Overground Station at one end of the road with Bethnal Green Tube Station (Central Line) around the corner with multiple bus routes into the City, West End and Beyond.

This property offers a bright and spacious open plan kitchen diner. A good sized reception room with direct access to the tranquil west facing garden. A large master bedroom with additional second double bedroom. A modern bathroom with monsoon shower over the bath.

The property is available to move in to from 16 August 2025 and Internal viewing of this property is essential with early viewing is highly recommended to avoid disappointment.

For more information or to arrange a viewing please do not hesitate to call in and speak with one of our Property Consultants.



Reception Room

15'8" x 12'1" (4.8 x 3.7)



Kitchen/Diner

14'5" x 12'1" (4.4 x 3.7)



Bedroom 1

18'8" x 8'6" (5.7 x 2.6)



Bedroom 2

14'1" x 7'10" (4.3 x 2.4)



Bathroom



Garden

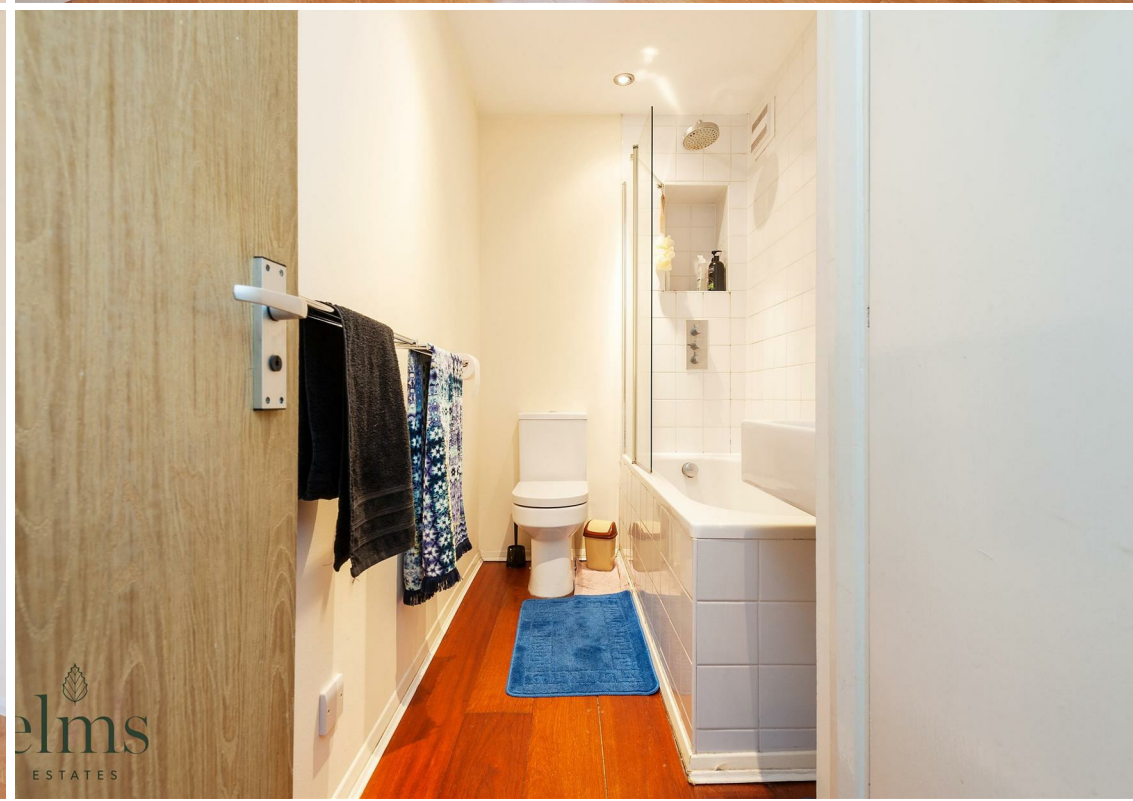


Material Information

Deposit: £2,884.61

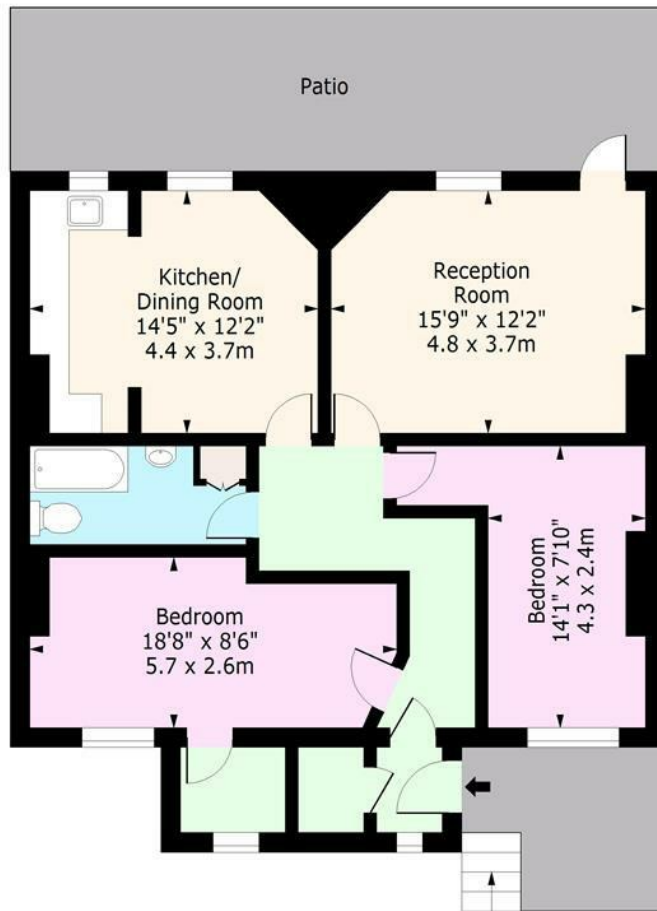
Length Of Tenancy: One Year

Council Tax Band: D





Wilmot Street, E2
Approx. Gross Internal Area 899 Sq Ft - 83.52 Sq M



Ground Floor
Floor Area 899 Sq Ft - 83.52 Sq M

For Illustration Purposes Only - Not To Scale
www.lpaplus.com

