



Upper Street
London, N1 2XG
£2,650 PCM


elms
ESTATES

Elms Estates are delighted to bring to the market To Let this two double bedroom ground floor apartment set within Tyndale Mansions which is a beautiful Red Brick Period Mansion Block built in 1926 around a delightful central green.

Tyndale Mansions is fantastically located directly off of the vibrant and ever popular Upper Street and you will enjoy easy access to all of the Restaurants, Bars, Shops, Markets, Gyms and Parks this Exciting Area has on offer. With Highbury & Islington (Victoria Line & Overground) Station on your doorstep and Angel (Northern Line) Station a short walk away the whole of London is easily accessible.

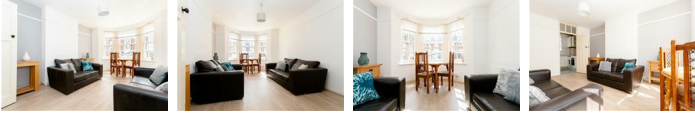
Internally the property has two good size bedrooms, Spacious reception, Kitchen and shower room with separate w/c.

Tyndale Mansions is available from 23 August 2025



Reception Room

17'4" x 11'9" (5.30 x 3.60)



Kitchen

7'6" x 5'10" (2.30 x 1.80)



Bedroom One

12'5" x 11'9" (3.80 x 3.60)



Bedroom Two

11'1" x 7'10" (3.40 x 2.40)



Shower Room



Seperate W/C

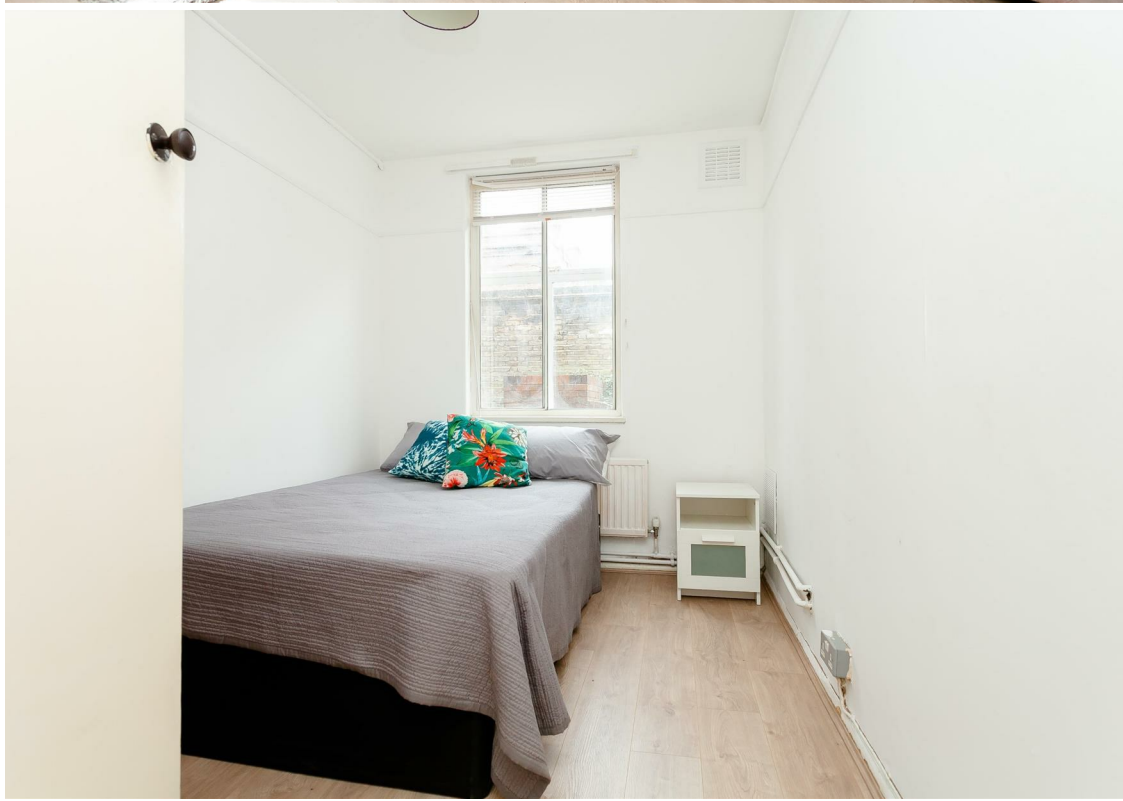


Material Information

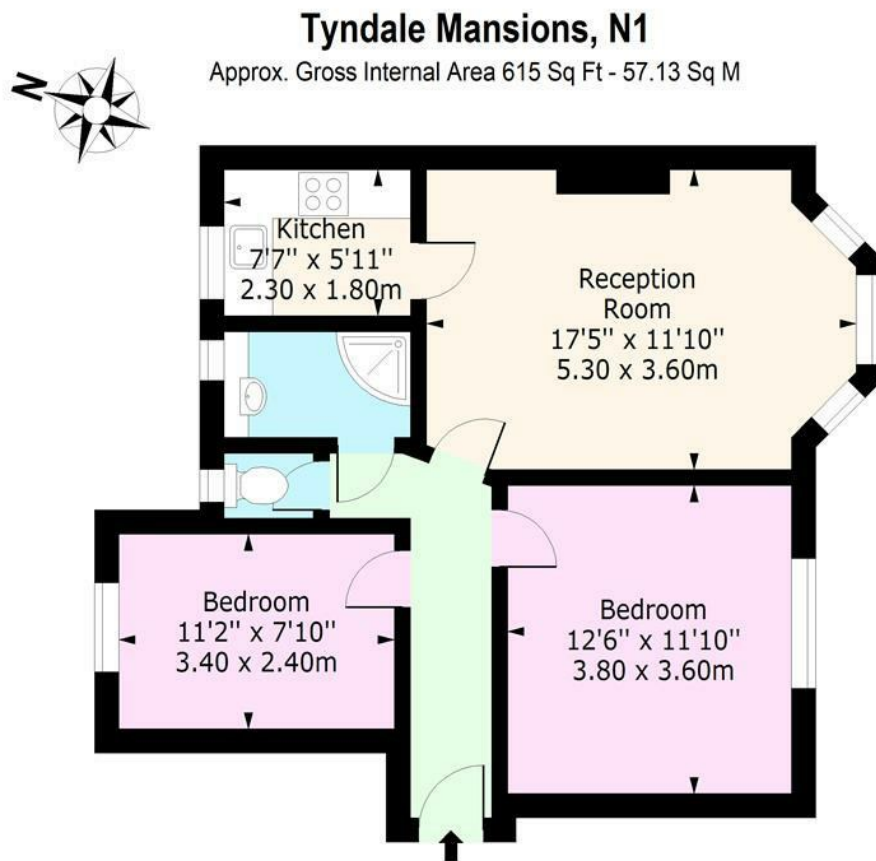
Deposit: £3,057.69

Length Of Tenancy: One Year

Council Tax Band: D







Ground Floor
Floor Area 615 Sq Ft - 57.13 Sq M

For Illustration Purposes Only - Not To Scale
www.laplus.com

