



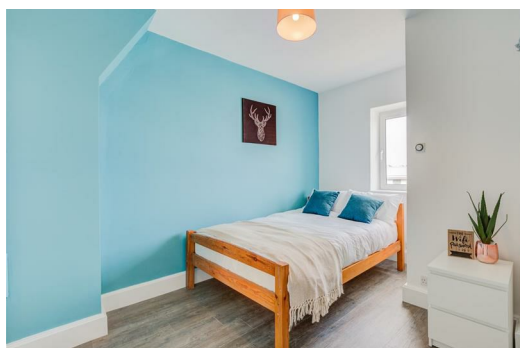
Digby Street, London, , E2 0LR
£2,100 PCM

Elms Estates are Hugely Excited to be able offer to the Rental Market this fabulous Two Double Bedroom Third Floor Apartment situated within a short walk of either Bethnal Green (Central Line) or Stepney Green (District Line) Tube Stations.

The Forum offers Bright and Spacious Accommodation and has been recently refurbished with a Modern Fitted Kitchen and Bathroom. The large Double Glazed Windows fill all of the rooms with light. The Forum is also situated within the Heart of Bethnal Green with easy access to all of the Restaurants, Bars, Shops, Gyms, Parks, Galleries and Museums this Exciting Area has on offer.

The property is available to move in to from 30th June 2025 onwards.

For more information or to arrange a viewing please do not hesitate to call in and speak with one of our Property Consultants.



Reception Room
12'9" x 12'9" (3.9 x 3.9)

Kitchen
9'6" x 5'6" (2.9 x 1.7)

Bedroom One
12'9" x 7'2" (3.9 x 2.2)

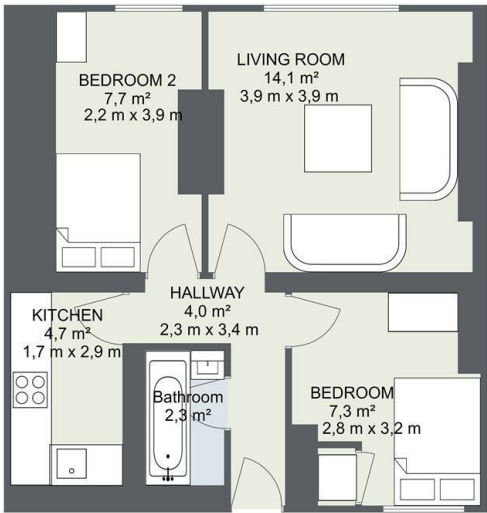
Bedroom Two
10'5" x 9'2" (3.2 x 2.8)

Bathroom

Material Information
Deposit: £2,423.07
Length Of Tenancy: One Year
Council Tax Band: C



The Forum



Total Size
40.1M²

SIZES AND DIMENSIONS ARE APPROXIMATE, ACTUAL MAY VARY.

Energy Efficiency Rating			Environmental Impact (CO ₂) Rating		
	Current	Potential		Current	Potential
Very energy efficient - lower running costs			Very environmentally friendly - lower CO ₂ emissions		
(92 plus) A			(92 plus) A		
(81-91) B			(81-91) B		
(69-80) C			(69-80) C		
(55-68) D			(55-68) D		
(39-54) E			(39-54) E		
(21-38) F			(21-38) F		
(1-20) G			(1-20) G		
Not energy efficient - higher running costs			Not environmentally friendly - higher CO ₂ emissions		
England & Wales	EU Directive 2002/91/EC		England & Wales	EU Directive 2002/91/EC	