



City View House
LONDON, E2 9QY

£2,350 PCM

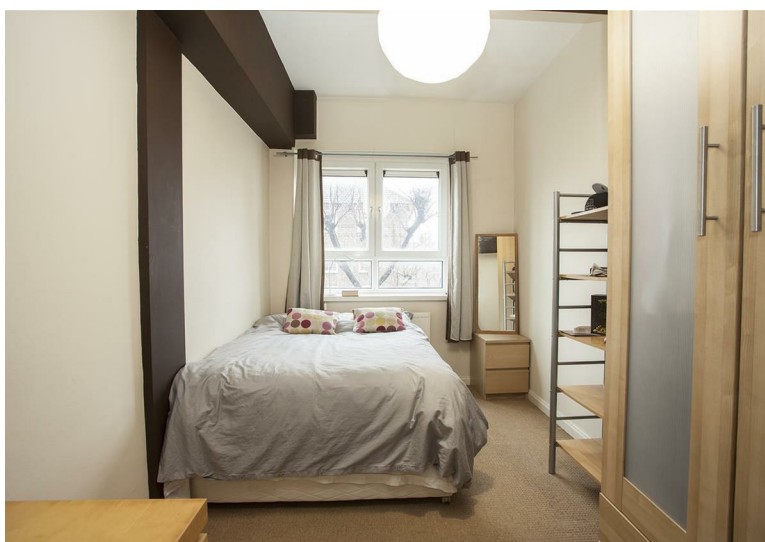

elms
ESTATES

Elms Estates are delighted to offer to the market To Let this Two Double Bedroom Apartment Located within the ever popular and well-maintained City View House in the Heart Of Bethnal Green.

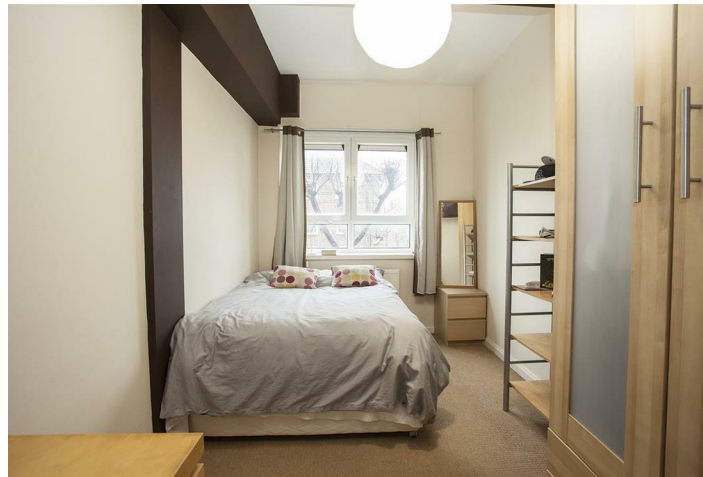
City View House is located directly on Bethnal Green Road and is only a few hundred meters from Bethnal Green (Central Line) Tube Station. Bethnal Green (London Overground) Train Station is within a couple of minutes' walk. Located within the heart of the East End, you will enjoy easy access to all of the restaurants, bars, shops, markets, gyms, parks, galleries and museums this exciting area has on offer.

Internally the property benefits from a spacious reception area, fitted kitchen, two double bedrooms and bathroom. The property is available to move in to from 28 June 2025 Onwards and early viewing is advised in order to avoid disappointment.

For more information or to arrange a viewing please do not hesitate to call in and speak with one of our property Consultants.



Reception



Bedroom Two

Kitchen



Bedroom One



Bathroom

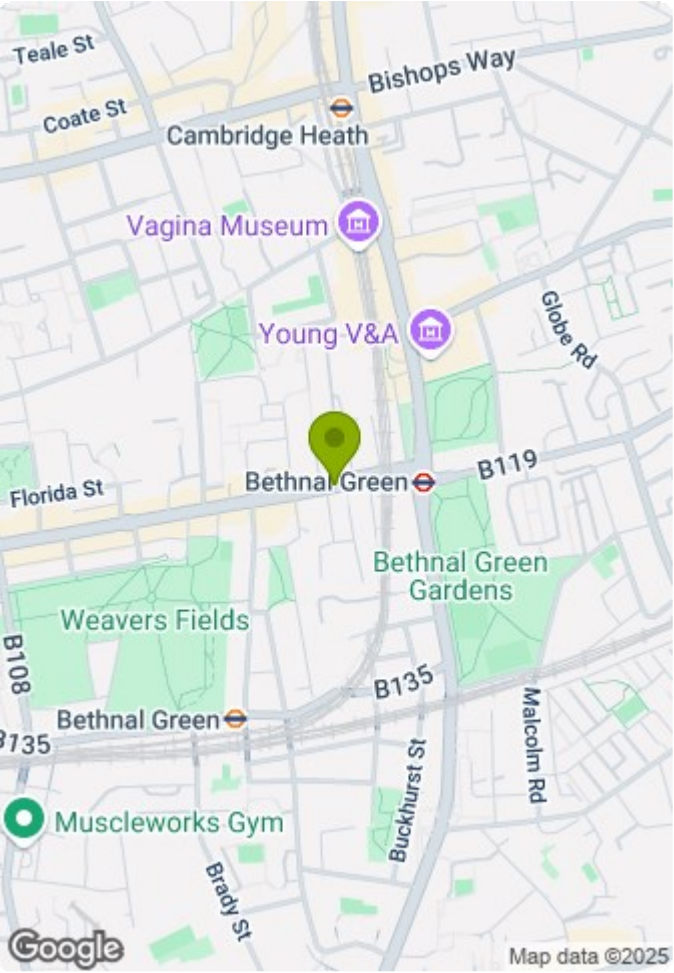
Material Information


Deposit: £2,711.53

Length Of Tenancy: One Year

Council Tax Band: D





Energy Efficiency Rating		
	Current	Potential
Very energy efficient - lower running costs		
(92 plus) A		
(81-91) B		
(69-80) C		
(55-68) D		
(39-54) E		
(21-38) F		
(1-20) G		
Not energy efficient - higher running costs		
	74	81
England & Wales		
EU Directive 2002/91/EC		

Environmental Impact (CO ₂) Rating		
	Current	Potential
Very environmentally friendly - lower CO ₂ emissions		
(92 plus) A		
(81-91) B		
(69-80) C		
(55-68) D		
(39-54) E		
(21-38) F		
(1-20) G		
Not environmentally friendly - higher CO ₂ emissions		
England & Wales		
EU Directive 2002/91/EC		