



Durward Street, London, , E1 5BD

£500,000

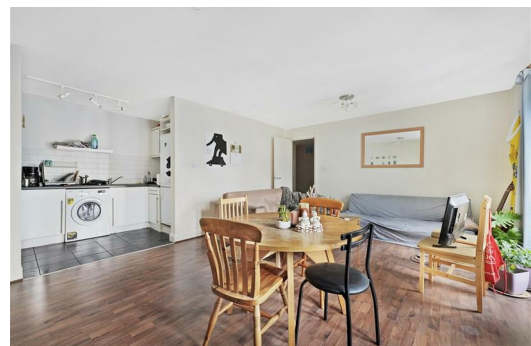
GUIDE PRICE £500,000 - £525,000 Elms Estates are pleased to offer to the market For Sale this spacious Two Bedroom Apartment situated within a sought after gated development.

Kempton Court is situated just moments from Whitechapel Road with numerous Green Spaces such as Weaver's Fields, Bethnal Green Gardens, Museum Gardens, St Bartholmew Gardens within easy reach. It benefits from Excellent Transport Links such as Whitechapel Station, Bethnal Green Underground & Overground Stations close by. It is a short walk to the famous Brick Lane & Shoreditch High Street and close to many superb Local Amenities and an abundance of Shops, Restaurants and Cafes.

Internally the property is bright and spacious throughout with a large reception room which benefits from two Juliet balconies, Separate kitchen, Two double bedrooms and a family bathroom. The development also offers amazing communal areas while also having an allocated parking space.

Kempton Court really does offer a unique and rare property purchase. An early internal inspection is highly recommended in order to avoid disappointment.

For more information or to arrange a viewing please do not hesitate to call in and speak with one of our property consultants.



Reception/Dining
18'0" x 13'9" (5.5 x 4.2)

Kitchen
9'10" x 5'10" (3.0 x 1.8)

Bedroom One
13'5" x 9'6" (4.1 x 2.9)

Bedroom Two
10'2" x 9'6" (3.1 x 2.9)

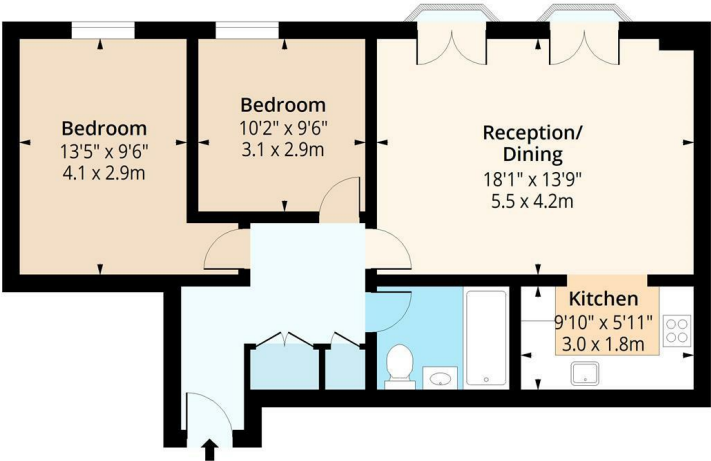
Bathroom

Material Information

Tenure: Leasehold
Length Of Lease: Approx 970 Years remaining
Annual Ground Rent: £1.00 Per year
Annual Service Charge: £3,265.70 Per Year
Council Tax Band: D



Kempton Court, E1
Approx. Gross Internal Area 716 Sq Ft - 66.52 Sq M



Second Floor

Floor Area 716 Sq Ft - 66.52 Sq M



Measured according to RICS IPMS2. Floor plan is for illustrative purposes only and is not to scale. Every attempt has been made to ensure the accuracy of the floor plan shown, however all measurements, fixtures, fittings and data shown are an approximate interpretation for illustrative purposes only. 1 sq m = 10.76 sq feet.

lpaplus.com

Date: 22/5/2025

