



Corfield Street  
London, E2 0DP  
£600,000

  
elms  
ESTATES



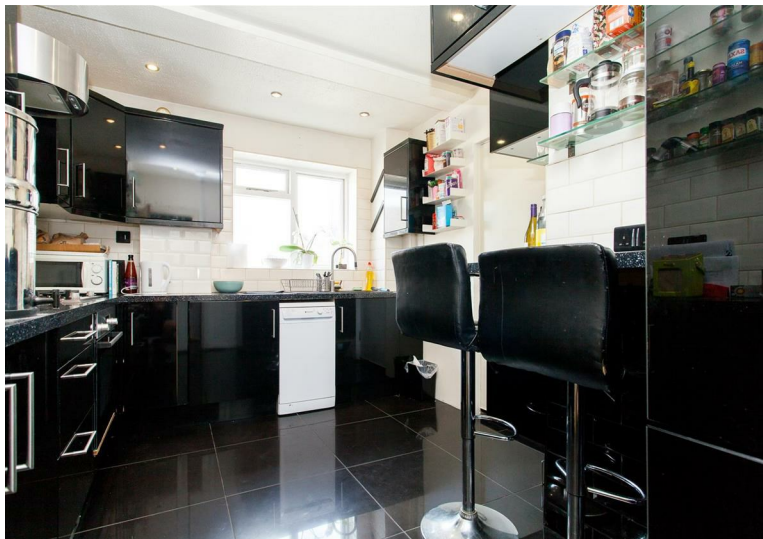
GUIDE PRICE £600,000 - £625,000 Elms Estates are pleased to offer to the market For Sale this Amazing Four Bedroom Apartment located within this Beautiful Victorian Building.

The property is situated just off Bethnal Green Road on a delightful street with numerous Green Spaces such as Weaver's Fields, Bethnal Green Gardens, Museum Gardens, St Bartholmew Gardens within easy reach. It has Excellent Transport Links such as Bethnal Green Underground & Overground Stations close by. It is a short walk to the famous Brick Lane & Shoreditch High Street and close to many superb Local Amenities and an abundance of Shops, Restaurants and Cafes.

Internally the property is bright and spacious throughout benefiting from a large reception room with a bay window, Separate modern fitted kitchen which gives you access to the balcony. The property boasts four double bedrooms as well as a contemporary bathroom.

Corfield Street is offered to the market on a CHAIN FREE basis and really is one to not be missed.

For more information or to arrange a viewing please do not hesitate to call in and speak with one of our Property Consultants.





Reception Room

14'11" x 11'8" (4.57 x 3.58)



Kitchen

12'4" x 9'3" (3.76 x 2.84)



Bedroom One

12'0" x 11'10" (3.66 x 3.61)



Bedroom Two

12'4" x 9'6" (3.78 x 2.92)



Bedroom Four

10'7" x 7'4" (3.25 x 2.24)



Bedroom Three

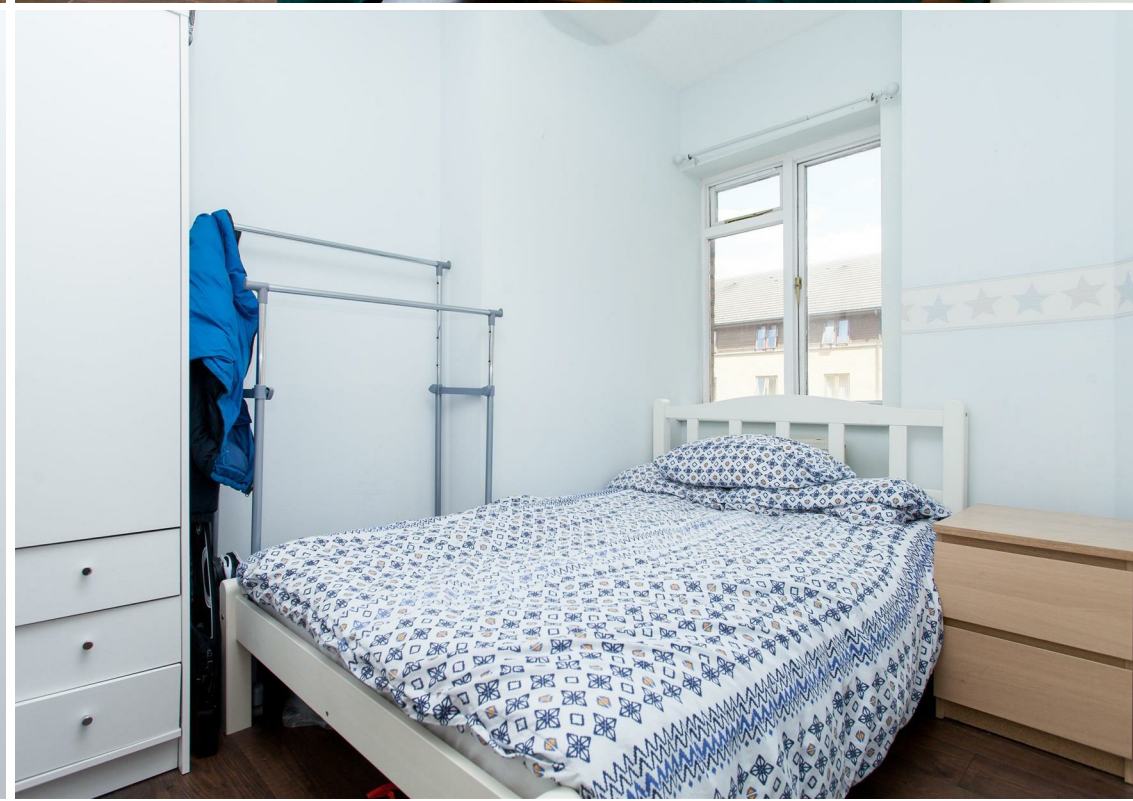
10'7" x 7'4" (3.25 x 2.24)



Bathroom





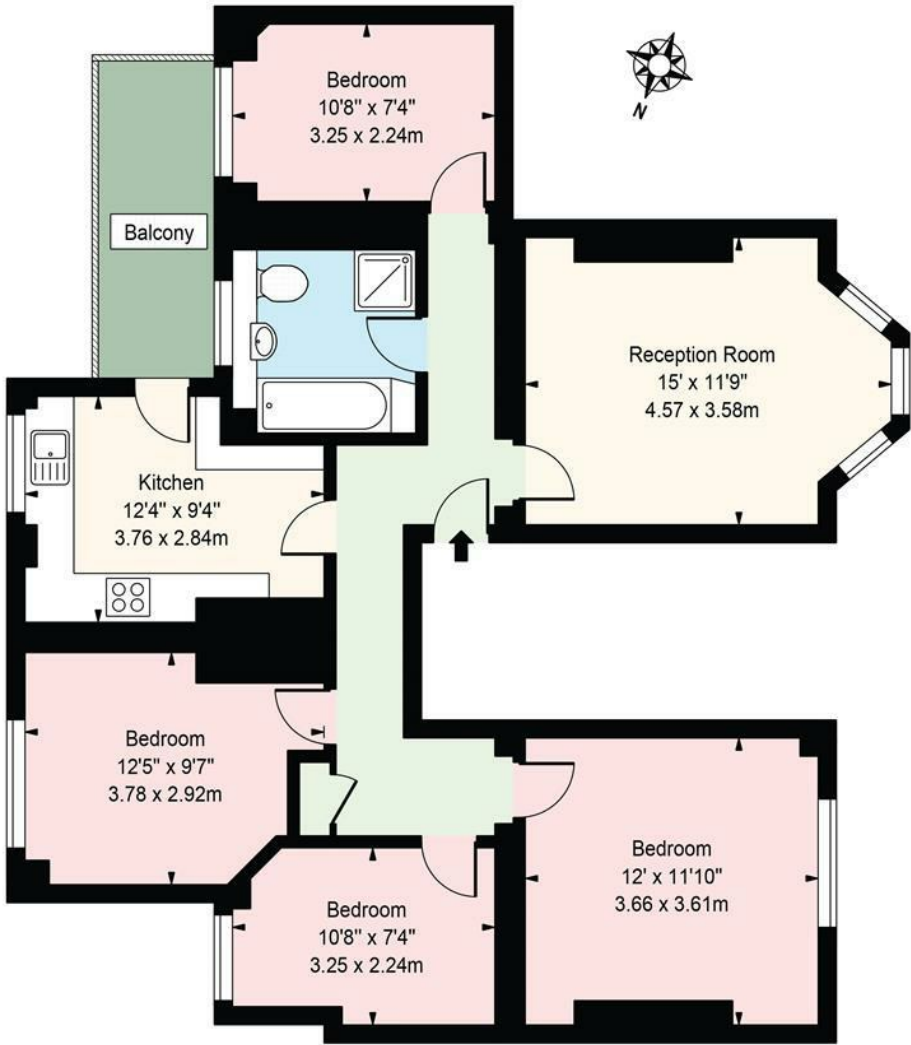






Corfield Street, E2

Approx. Gross Internal Area 902 Sq Ft - 83.80 Sq M



Second Floor

For Illustration Purposes Only - Not To Scale

