



Kirkwall Place, London, , E2 0NB

£1,800 PCM

Elms Estates are delighted to be able to offer to the market for sale this amazing One double bedroom apartment situated in the heart of Bethnal Green.

Pepys House is superbly located on a Quiet Residential Street with no through traffic and is just a short walk to Bethnal Green Tube Station and offers bus routes to the City, West End and beyond. The ever popular Victoria Park is also within walking distance and being located within the Heart of the East End you will enjoy easy access to all of the Restaurants, Bars, Shops, Markets, Gyms, Parks, Galleries and Museums this Exciting Area has on offer.

Internally the property is presented well throughout with a Spacious lounge, Separate kitchen, good sized bedroom and bathroom. The property is available to move in to from 12 June 2025.

For more information or to arrange a viewing please do not hesitate to call in and speak with one of our Property Consultants.



Reception
15'5" x 10'6" (4.70m x 3.20m)

Kitchen
8'2" x 6'11" (2.49m x 2.11m)

Bedroom
14'5" x 9'10" (4.4 x 3.0)

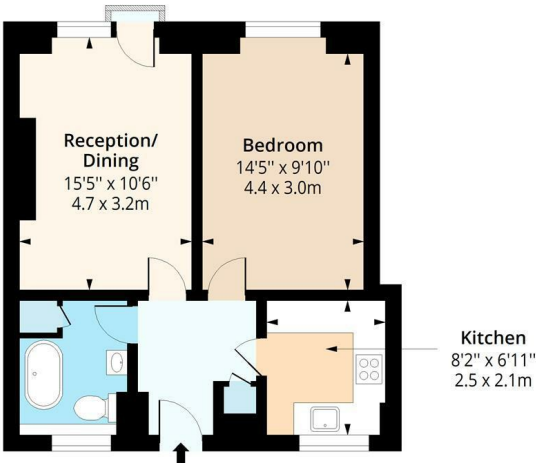
Bathroom

Material Information

Deposit: £2,076.92
Length Of Tenancy: Six Months
Council Tax Band: C



Pepys House, E2
Approx. Gross Internal Area 515 Sq Ft - 47.84 Sq M



First Floor
Floor Area 515 Sq Ft - 47.84 Sq M



Measured according to RICS IPMS2. Floor plan is for illustrative purposes only and is not to scale. Every attempt has been made to ensure the accuracy of the floor plan shown, however all measurements, fixtures, fittings and data shown are an approximate interpretation for illustrative purposes only. 1 sq m = 10.76 sq feet.

lpaplus.com

Date: 20/5/2025

Energy Efficiency Rating		Environmental Impact (CO ₂) Rating	
Current	Potential	Current	Potential
<p>Very energy efficient - lower running costs</p> <p>(92 plus) A</p> <p>(81-91) B</p> <p>(69-80) C</p> <p>(55-68) D</p> <p>(39-54) E</p> <p>(21-38) F</p> <p>(1-20) G</p> <p>Not energy efficient - higher running costs</p>		<p>Very environmentally friendly - lower CO₂ emissions</p> <p>(92 plus) A</p> <p>(81-91) B</p> <p>(69-80) C</p> <p>(55-68) D</p> <p>(39-54) E</p> <p>(21-38) F</p> <p>(1-20) G</p> <p>Not environmentally friendly - higher CO₂ emissions</p>	
79	81		
England & Wales		England & Wales	
EU Directive 2002/91/EC		EU Directive 2002/91/EC	