



Ayrton Gould House  
London, E2 0SD

£3,300 PCM

  
elms  
ESTATES



Elms Estates are pleased to be able to offer to the market To Let this Four Bedroom Ground Floor Flat with a Private Rear Garden.

Aryton Gould House is situated on Roman Road and offers excellent access to the Regents Canal and the Glorious Victoria Park that both offer Beautiful Open Spaces and Miles of Scenic Walks. This property really is set within the Heart of the East End with easy access to all of the Restaurants, Bars, Shops, Markets, Gyms, Parks, Galleries and Museums this Exciting Area has on offer. The property also benefits from excellent transport links, being within walking distance to Bethnal Green tube station as well as benefiting from multiple bus routes into the City.

Internally the property has been redecorated throughout and had new wooden flooring fitted to three of the four bedrooms and the hallway the property is spacious throughout with four good sized bedrooms, separate kitchen, newly fitted shower room with separate W/C. Please note the property has no separate lounge. The property is available to move in to Immediately.

For more information or to arrange a viewing please do not hesitate to call in and speak with one of our Property Consultants.





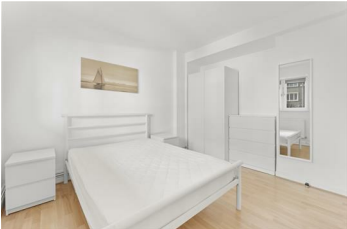
**Kitchen** 10'5" x 8'6" (3.20 x 2.60)



**Bedroom One** 13'5" x 12'5" (4.10 x 3.80)



**Bedroom Two** 12'5" x 9'10" (3.80 x 3.00)



**Bedroom Three** 11'5" x 9'10" (3.50 x 3.00)



**Bedroom Four** 9'10" x 6'10" (3.00 x 2.10)



**Shower Room**



**W/C**



**Garden**



**Material Information**  
Deposit: £3,807.69  
Length Of Tenancy: One Year  
Council Tax Band: C

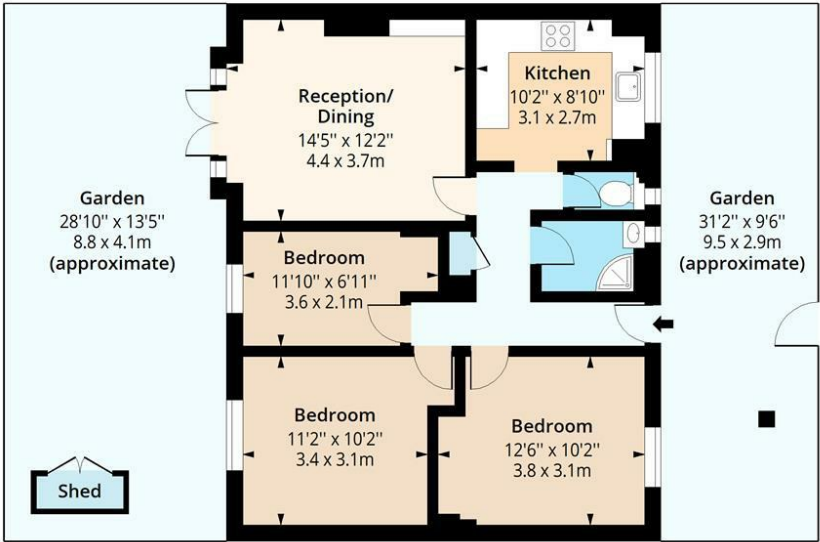




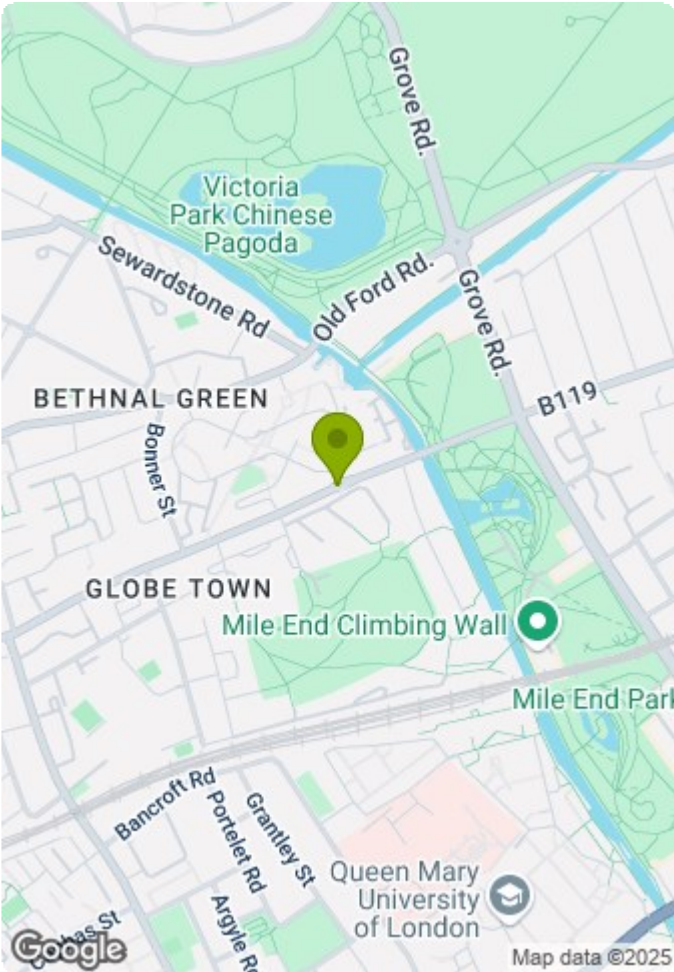


# Ayrton Gould House, E2

Approx. Gross Internal Area 746 Sq Ft - 69.30 Sq M



Ground Floor  
Floor Area 746 Sq Ft - 69.30 Sq M



Measured according to RICS IPMS2. Floor plan is for illustrative purposes only and is not to scale. Every attempt has been made to ensure the accuracy of the floor plan shown, however all measurements, fixtures, fittings and data shown are an approximate interpretation for illustrative purposes only. 1 sq m = 10.76 sq feet.

lpaplus.com

Date: 17/5/2025

