



Millennium Place
London, E2 9NL
£1,850 PCM


elms
ESTATES

Elms Estates are Excited to be able to offer To Let this One Bedroom Top Floor Apartment within a Gated Development.

Millennium Place is Located opposite Cambridge Heath Overground Station which is only two stops into Liverpool Street and offers excellent access to Bethnal Green Tube Station (Central Line) and with multiple bus routes into the City, West End and beyond. The Glorious Victoria Park is within easy reach and offers Beautiful Open Spaces and Miles of Scenic Walks. The Relaxed, Cool Feel of Victoria Park Farmers Market will make for wonderful lazy Sunday morning strolls while the vibrant Broadway Market is also a short walk away and offers an array of shops and dining experiences.

Internally the property offers spacious accommodation with a large reception room that gives you access to the Juliet balcony, Kitchen, Double bedroom and Bathroom. The property also benefits from Wooden Floors throughout, Gas Central Heating and Double Glazing.

Millennium Place is Available from 12 July 2025 onwards. Internal viewing of this property is a must and early viewing is highly recommended in order to avoid disappointment.

For more information or to arrange a viewing please do not hesitate to call in and speak with one of our Property Consultants.



Reception

16'1" x 9'6" (4.90m x 2.90m)



Kitchen

9'2" x 6'3" (2.79m x 1.91m)



Bedroom

12'2" x 9'10" (3.71m x 3.00m)



Bathroom



Balcony



Material Information

Deposit: £2,134.61

Length Of Tenancy: One Year

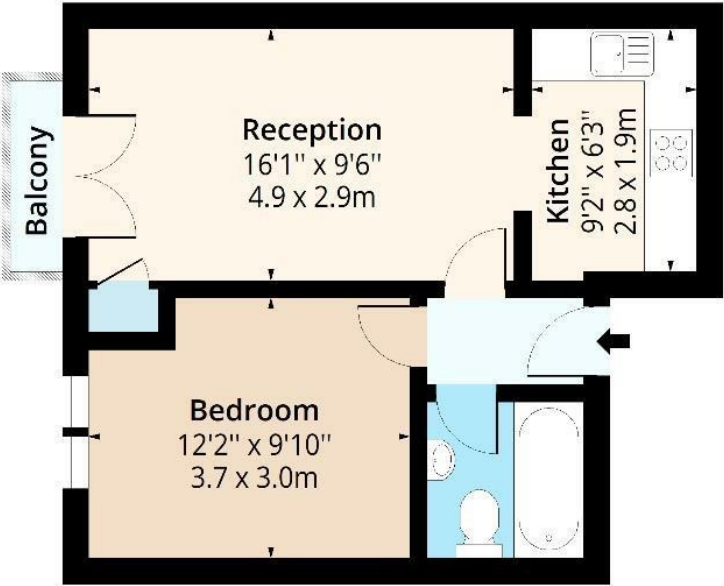
Council Tax Band: C





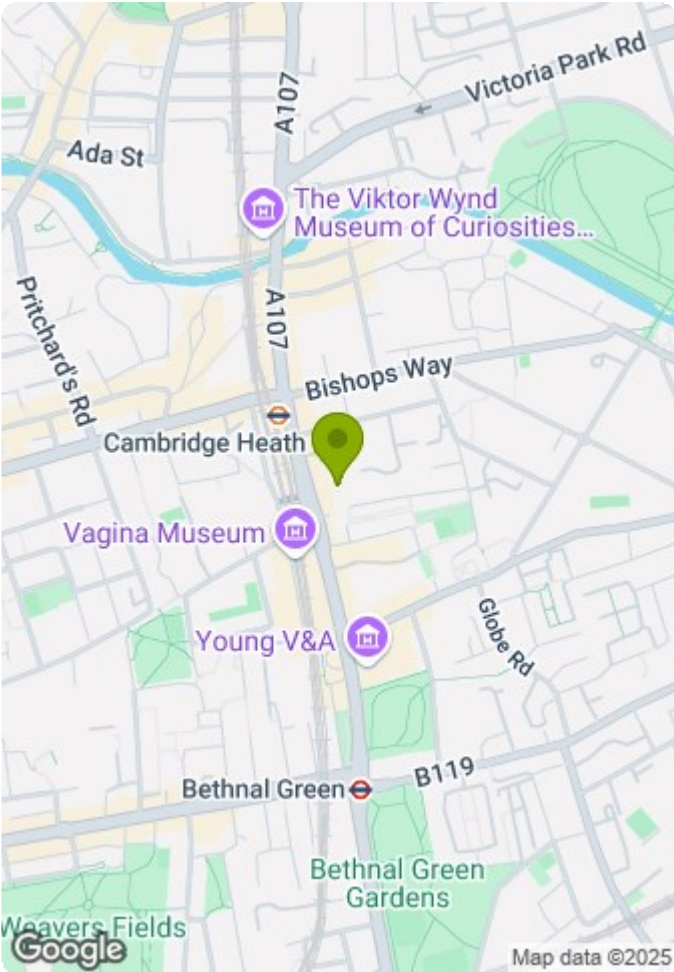
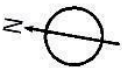
Millennium Place, E2

Approx. Gross Internal Area 413 Sq Ft - 38.37 Sq M
Approx. Gross Balcony Area 14 Sq Ft - 1.30 Sq M



Fourth Floor

Floor Area 413 Sq Ft - 38.37 Sq M



Measured according to RICS IPMS2. Floor plan is for illustrative purposes only and is not to scale. Every attempt has been made to ensure the accuracy of the floor plan shown, however all measurements, fixtures, fittings and data shown are an approximate interpretation for illustrative purposes only. 1 sq m = 10.76 sq feet.

lpaplus.com

Date: 10/5/2025

