



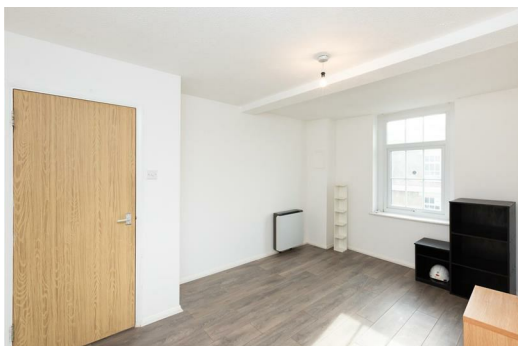
## Ainsley Street, London, , E2 0DL £2,250 PCM

Elms Estates are delighted to offer to the market To Let this Two double bedroom apartment located in the heart of Bethnal Green.

Ainsley Street is situated just off Bethnal Green Road on a delightful street with numerous Green Spaces such as Weaver's Fields, Bethnal Green Gardens, Museum Gardens, St Bartholmew Gardens within easy reach. It has Excellent Transport Links such as Bethnal Green Underground & Overground Stations close by. It is a short walk to the famous Brick Lane & Shoreditch High Street and close to many superb Local Amenities and an abundance of Shops, Restaurants and Cafes.

Internally the property has a spacious lounge with separate kitchen benefiting from room for a dining table, two double bedrooms and bathroom. The property benefits from a private balcony and is available to move in to from 18 June 2025 Onwards.

To arrange a viewing please call in and speak with one of our property consultants. Early inspection is highly recommended to avoid disappointment.





**Reception Room**  
13'9" x 11'5" (4.20 x 3.50)

**Kitchen/Dinner**  
14'1" x 12'5" (4.3 x 3.8)

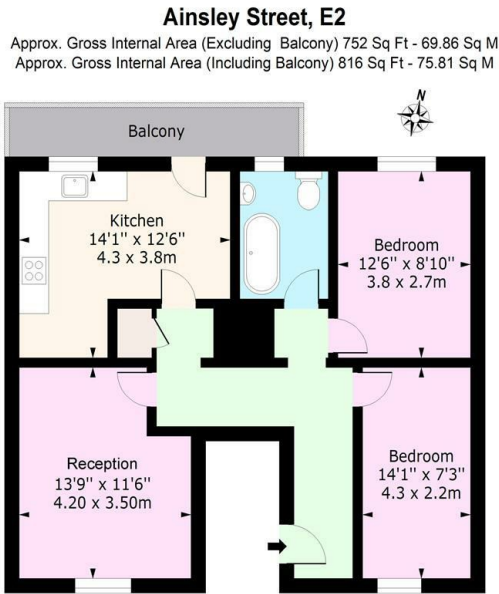
**Bedroom One**  
12'5" x 8'10" (3.8 x 2.7)

**Bedroom Two**  
14'1" x 7'2" (4.3 x 2.2)

**Bathroom**

**Balcony**

**Material Information**  
Deposit: £2,596.15  
Length Of Tenancy: One Year  
Council Tax Band: D



**Fourth Floor**  
Floor Area 752 Sq Ft - 69.86 Sq M

For Illustration Purposes Only - Not To Scale  
www.laplus.com

Energy Efficiency Rating		Environmental Impact (CO <sub>2</sub> ) Rating	
Current	Potential	Current	Potential
<div><div></div><div></div><div></div><div></div><div></div><div></div><div></div></div> <p>Very energy efficient - lower running costs</p> <p>(92 plus) <b>A</b></p> <p>(81-91) <b>B</b></p> <p>(69-80) <b>C</b></p> <p>(55-68) <b>D</b></p> <p>(39-54) <b>E</b></p> <p>(21-38) <b>F</b></p> <p>(1-20) <b>G</b></p> <p>Not energy efficient - higher running costs</p>		<div><div></div><div></div><div></div><div></div><div></div><div></div><div></div></div> <p>Very environmentally friendly - lower CO<sub>2</sub> emissions</p> <p>(92 plus) <b>A</b></p> <p>(81-91) <b>B</b></p> <p>(69-80) <b>C</b></p> <p>(55-68) <b>D</b></p> <p>(39-54) <b>E</b></p> <p>(21-38) <b>F</b></p> <p>(1-20) <b>G</b></p> <p>Not environmentally friendly - higher CO<sub>2</sub> emissions</p>	
England & Wales		England & Wales	
EU Directive 2002/91/EC		EU Directive 2002/91/EC	