



Corfield Street, London, , E2 0DN

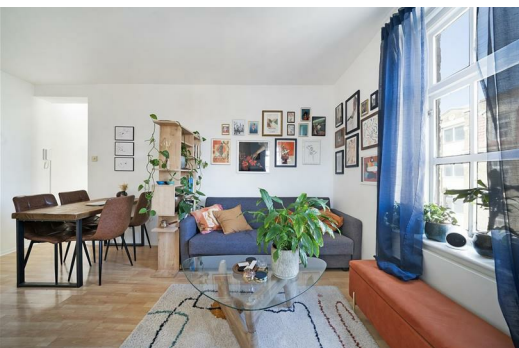
£425,000

Guide Price £425,000 - £435,000 Elms Estates are pleased to offer to the market For Sale this One Double Bedroom Apartment offering over 500 sq ft located on the third Floor of this Beautiful Victorian Building

The property is situated just off Bethnal Green Road on a delightful street with numerous Green Spaces such as Weaver's Fields, Bethnal Green Gardens, Museum Gardens, St Bartholmew Gardens within easy reach. It has Excellent Transport Links such as Bethnal Green Underground & Overground Stations close by. It is a short walk to the famous Brick Lane & Shoreditch High Street and close to many superb Local Amenities and an abundance of Shops, Restaurants and Cafes.

Internally the property is presented well with a bright and airy spacious living area, good size kitchen and family bathroom. The property also benefits from its own parking space and is offered to the market on a CHAIN FREE basis.

For more information or to arrange a viewing please do not hesitate to call in and speak with one of our Property Consultants.



Reception Room/Dining Room
17'0" x 16'0" (5.20 x 4.90)

Kitchen
12'1" x 9'0" (3.70 x 2.75)

Bedroom
12'1" x 9'6" (3.70 x 2.90)

Bathroom

Material Information

Tenure: Leasehold
Length Of Lease: Approx 87 Years remaining
Annual Ground Rent: £ included in the service charge
Annual Service Charge: £1,344.00
Council Tax Band: C



Third Floor
Floor Area 551 Sq Ft - 51.19 Sq M

For Illustration Purposes Only - Not To Scale
www.lpaplus.com

Energy Efficiency Rating			Environmental Impact (CO ₂) Rating		
	Current	Potential		Current	Potential
Very energy efficient - lower running costs			Very environmentally friendly - lower CO ₂ emissions		
(92 plus) A			(92 plus) A		
(81-91) B		82	(81-91) B		
(69-80) C			(69-80) C		
(55-68) D			(55-68) D		
(39-54) E	42		(39-54) E		
(21-38) F			(21-38) F		
(1-20) G			(1-20) G		
Not energy efficient - higher running costs			Not environmentally friendly - higher CO ₂ emissions		
England & Wales	EU Directive 2002/91/EC		England & Wales	EU Directive 2002/91/EC	