



Jebb Street, London, , E3 2TL £1,600 PCM

Elms Estates are offering to the market To Let this ONE bedroom first floor apartment available 02 May 2025

Jebb Street is situated within easy reach of Bow Church DLR Station and Bow Road (District Line) Tube Station and the Multiple Bus Routes servicing Bow Road with routes in to the city, West End and beyond. For car drivers the is also excellent access to the A12.

The property offers spacious living accommodation with a good size lounge, separate kitchen and double bedroom.

For more information or to arrange a viewing please do not hesitate to call in and speak with one of our Property Consultants. Early viewing is recommended.



Lounge

Bedroom

Kitchen

Bathroom

Material Information

Deposit: £1,846.15

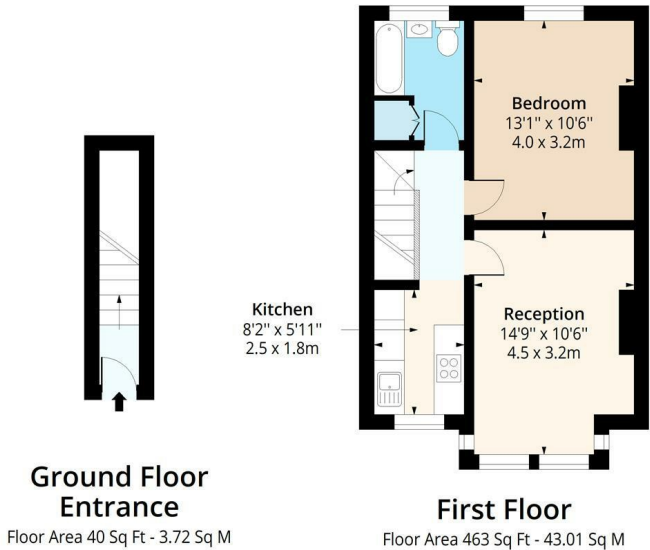
Length Of Tenancy: One Year

Council Tax Band: C



Jebb Street, E3

Approx. Gross Internal Area 503 Sq Ft - 46.73 Sq M



Measured according to RICS IPMS2. Floor plan is for illustrative purposes only and is not to scale. Every attempt has been made to ensure the accuracy of the floor plan shown, however all measurements, fixtures, fittings and data shown are an approximate interpretation for illustrative purposes only. 1 sq m = 10.76 sq feet.

lpaplus.com

Date: 9/4/2025

Energy Efficiency Rating		Environmental Impact (CO ₂) Rating			
Very energy efficient - lower running costs	Current	Potential	Very environmentally friendly - lower CO ₂ emissions	Current	Potential
(92 plus) A			(92 plus) A		
(81-91) B			(81-91) B		
(69-80) C			(69-80) C		
(55-68) D			(55-68) D		
(39-54) E			(39-54) E		
(21-38) F			(21-38) F		
(1-20) G			(1-20) G		
Not energy efficient - higher running costs			Not environmentally friendly - higher CO ₂ emissions		
England & Wales		EU Directive 2002/91/EC	England & Wales		EU Directive 2002/91/EC