



Globe Road  
London, E1 4DY  
£2,700 PCM

  
elms  
ESTATES



Elms Estates are delighted to bring to the market To Let this Three double bedroom Maisonette with its own Garden.

The property is located within easy reach of good public transport links with Stepney Green (Hammersmith & City and District Lines) Tube Station within a short walk along with multiple bus routes in to the City, West End and beyond easily accessible.

Internally the property has a spacious lounge leading to the garden, Separate kitchen, Three double bedrooms and a bathroom with a separate W/c. Additionally, the property benefits from Double Glazing and Gas Central Heating.

Globe Road is available to move in to Immediately. An early internal inspection is highly recommended in order to avoid disappointment.

For more information or to arrange a viewing please do not hesitate to call in and speak with one of our Property Consultants.





**Reception Room**

15'8" x 13'9" (4.80 x 4.20)



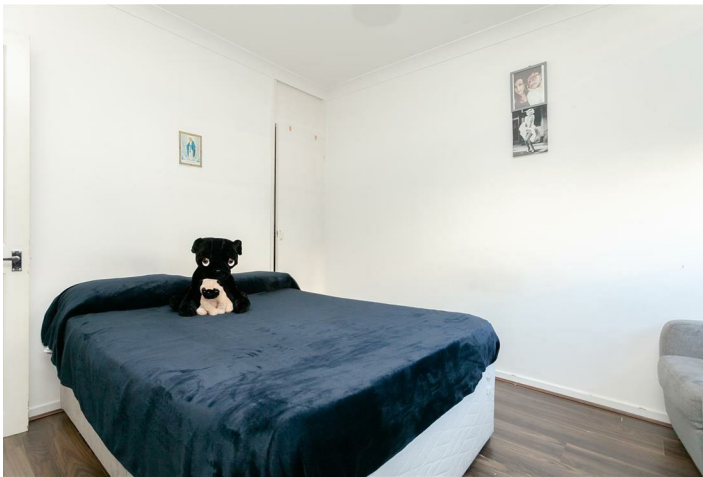
**Kitchen**

10'2" x 10'2" (3.10 x 3.10)



**Bedroom One**

11'9" x 9'10" (3.60 x 3.00)



**Bedroom Two**

13'9" x 8'2" (4.2 x 2.5)



**Bedroom Three**

10'9" x 7'2" (3.30 x 2.20)



**Bathroom**



**W/c**

**Garden**



**Material Information**

Deposit: £3,115.38

Length Of Tenancy: One Year

Council Tax Band: C



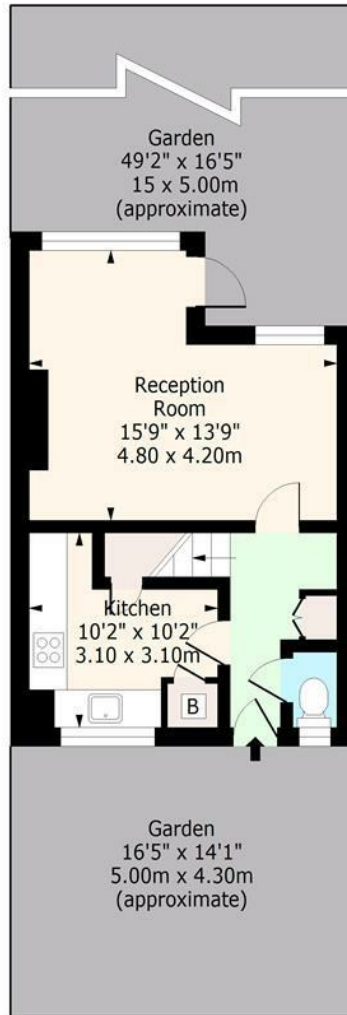




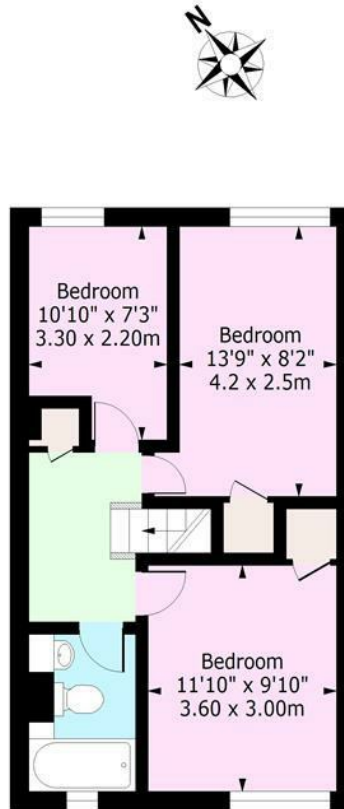


# Globe Road, E1

Approx. Gross Internal Area 837 Sq Ft - 77.76 Sq M



**Ground Floor**  
Floor Area 362 Sq Ft - 33.63 Sq M



**First Floor**  
Floor Area 475 Sq Ft - 44.13 Sq M

For Illustration Purposes Only - Not To Scale

[www.ipaplus.com](http://www.ipaplus.com)

