



## Bishops Way, London, , E2 9HJ £2,000 PCM

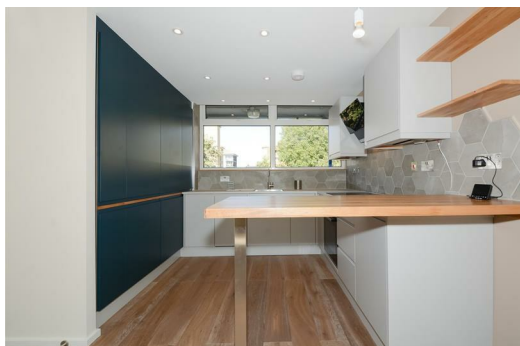
Elms Estates are delighted to be able to offer to the market To Let this Amazing One Bedroom Apartment which has recently been refurbished throughout.

The property is situated within a couple of minutes walk of the Glorious Victoria Park and the Regents Canal which offer Beautiful Open Spaces and Miles of Scenic Walks. The property is also conveniently close to Cambridge Heath Overground Station and Bethnal Green (Central Line) Underground Station is approximately 10 minutes walk away.

Internally the Property offers spacious living accommodation which is modern throughout with a good size reception/kitchen area, Double bedroom and shower room. The property also benefits from Gas Central Heating and Double Glazing.

The property is AVAILABLE 24th October 2024

For more information or to arrange a viewing please do not hesitate to call in and speak with one of our Property Consultants.



## Reception/Kitchen

22'8" x 10'5" (6.93 x 3.20)

## Bedroom

10'5" x 12'4" (3.20 x 3.78)

## Shower Room

## Balcony

## Material Information

Deposit: £2,307.69

Length Of Tenancy: One Year

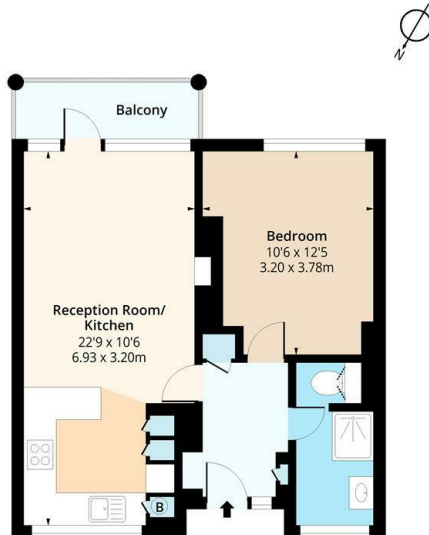
Council Tax Band: B



## Paget House, E2

Approx. Gross Internal Area 480 Sq Ft - 44.59 Sq M

Approx. Gross Balcony Area 39 Sq Ft - 3.62 Sq M



## First Floor

Floor Area 480 Sq Ft - 44.59 Sq M



Measured according to RICS IPMS3. Floor plan is for illustrative purposes only and is not to scale. Every attempt has been made to ensure the accuracy of the floor plan shown, however all measurements, fixtures, fittings and data shown are an approximate interpretation for illustrative purposes only. 1 sq m = 10.76 sq feet.

Date: 26/9/2023

Energy Efficiency Rating		Environmental Impact (CO <sub>2</sub> ) Rating	
Current	Potential	Current	Potential
<small>Very energy efficient - lower running costs</small>			
<small>Very environmentally friendly - lower CO<sub>2</sub> emissions</small>			
<small>Not energy efficient - higher running costs</small>			
<small>Not environmentally friendly - higher CO<sub>2</sub> emissions</small>			
England & Wales		England & Wales	
EU Directive 2002/91/EC		EU Directive 2002/91/EC	

The table displays energy and environmental ratings. The Energy Efficiency Rating shows a current score of 77 (D) and a potential score of 81 (B). The Environmental Impact (CO<sub>2</sub>) Rating shows a current score of 11-33 (F) and a potential score of 1-29 (C).