



Corfield Street, London, , E2 0DN £1,600 PCM

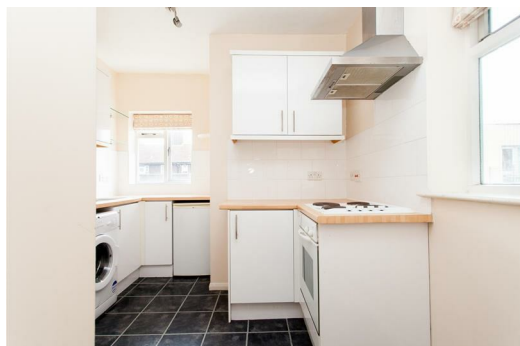
Elms Estates are pleased to offer to the market To Let this One Bedroom Apartment located within the Heart of Bethnal Green.

The property is situated just off Bethnal Green Road on a delightful street with numerous Green Spaces such as Weaver's Fields, Bethnal Green Gardens, Museum Gardens, St Bartholmew Gardens within easy reach. It has Excellent Transport Links such as Bethnal Green Underground & Overground Stations close by while also only being 10 minutes from the Elizabeth Line too. It is a short walk to the famous Brick Lane & Shoreditch High Street and close to many superb Local Amenities and an abundance of Shops, Restaurants and Cafes.

Internally the property is bright and spacious throughout with a good size reception room, Modern fitted kitchen, Double bedroom and bathroom.

Corfield Street is AVAILABLE NOW and really is one to not be missed.

For more information or to arrange a viewing please do not hesitate to call in and speak with one of our Property Consultants.



Reception

12'1" x 12'1" (3.7 x 3.7)

Kitchen

11'5" x 9'2" (3.5 x 2.8)

Bedroom One

10'5" x 7'6" (3.2 x 2.3)

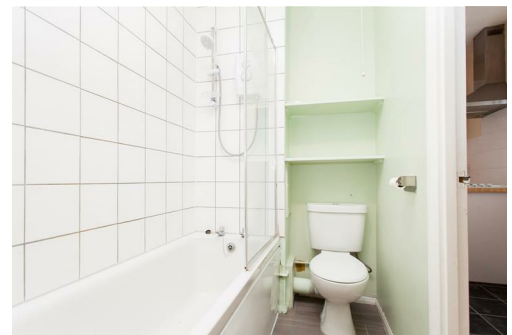
Bathroom

Material Information

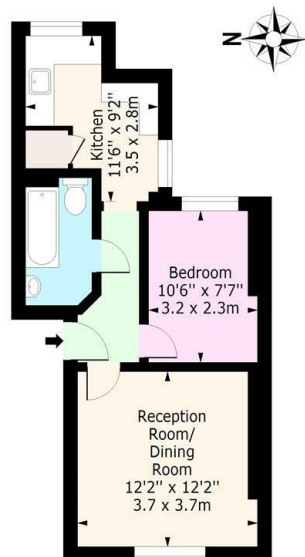
Deposit: £1,846.15

Length Of Tenancy: One Year

Council Tax Band: B



Corfield Street, E2
Approx. Gross Internal Area 409 Sq Ft - 38.00 Sq M



Third Floor
Floor Area 409 Sq Ft - 38.00 Sq M

For Illustration Purposes Only - Not To Scale
www.lpaplus.com

Energy Efficiency Rating		Environmental Impact (CO ₂) Rating	
Current	Potential	Current	Potential
<p>Very energy efficient - lower running costs</p> <p>(92 plus) A</p> <p>(81-91) B</p> <p>(69-80) C</p> <p>(55-68) D</p> <p>(39-54) E</p> <p>(21-38) F</p> <p>(1-20) G</p> <p>Not energy efficient - higher running costs</p>			
	84		75
	63		43
<p>England & Wales</p> <p>EU Directive 2002/91/EC</p>		<p>England & Wales</p> <p>EU Directive 2002/91/EC</p>	