



Fern Street, London, , E3 3PR
£2,700 PCM

Elms Estates are delighted to offer to the market To Let this Three bedroom Maisonette split over the ground and first floor with its own rear garden.

The property is located with the convenience of local shops nearby and you are within a short walk of either Tube Stations or the DLR with bus routes servicing these also.

Internally the property is spacious throughout with a good size reception room, Separate kitchen, Three good size bedrooms, bathroom with separate w/c and own rear garden. The property is modern throughout an benefits from gas central heating and double glazing.

Fern Street is available from 17th October 2024 and an early internal inspection is highly recommended to avoid disappointment.



Reception Room

15'8" x 13'10" (4.79 x 4.22)

Kitchen

11'4" x 8'5" (3.47 x 2.57)

Bedroom One

15'3" x 8'5" (4.66 x 2.57)

Bedroom Two

14'3" x 8'9" (4.35 x 2.68)

Bedroom Three

11'0" x 6'7" (3.36 x 2.01)

Bathroom

Separate W/c

Garden

24'9" x 16'2" (7.56 x 4.95)

Material Information

Deposit: £3,115.38

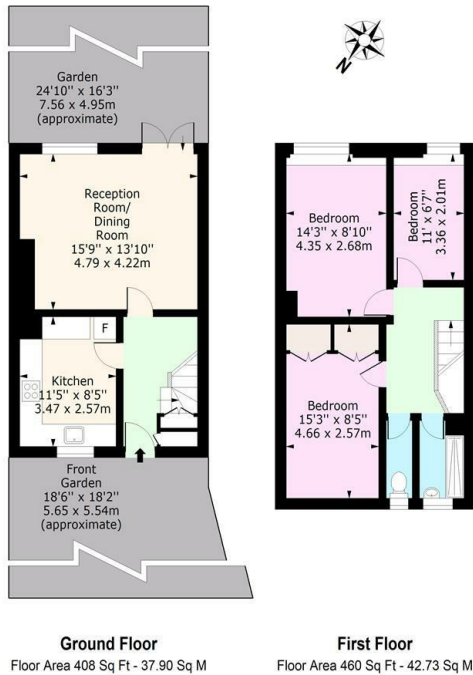
Length Of Tenancy: One Year

Council Tax Band: C



Fern Street, E3

Approx. Gross Internal Area 868 Sq Ft - 80.64 Sq M



Energy Efficiency Rating		Environmental Impact (CO ₂) Rating	
Current	Potential	Current	Potential
68	76	65	76

Very energy efficient - lower running costs

Very environmentally friendly - lower CO₂ emissions

England & Wales EU Directive 2002/91/EC