



Bethnal Green Road  
London, E2 9QR

£2,500 Per Month



Elms Estates are pleased to offer to the market this Two Double Bedroom Apartment Located within the ever popular and well-maintained City View House in the Heart Of Bethnal Green.

City View House is located directly on Bethnal Green Road and is only a few hundred meters from Bethnal Green (Central Line) Tube Station. Bethnal Green (London Overground) Train Station is within a couple of minutes' walk. Located within the heart of the East End, you will enjoy easy access to all of the restaurants, bars, shops, markets, gyms, parks, galleries and museums this exciting area has on offer.

Internally the property benefits from a spacious reception area, fitted kitchen, two double bedrooms and good sized bathroom. The property is available to move in to from 14 September 2024 Onwards and early viewing is advised in order to avoid disappointment.

For more information or to arrange a viewing please do not hesitate to call in and speak with one of our property Consultants.



## Reception

18'8" x 11'1" (5.7 x 3.4)



## Kitchen

10'9" x 6'6" (3.3 x 2.0)



## Bathroom



## Bedroom One

13'1" x 9'10" (4.0 x 3.0)



## Bedroom Two

10'5" x 10'2" (3.2 x 3.1)

## Material Information

Deposit: £2,884.61

Length Of Tenancy: One Year

Council Tax Band: D





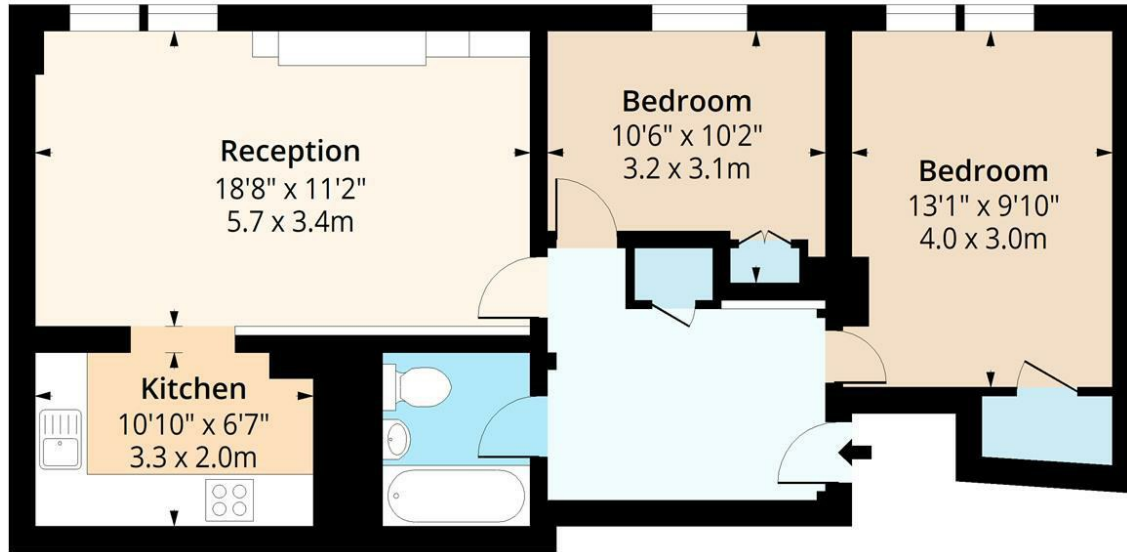






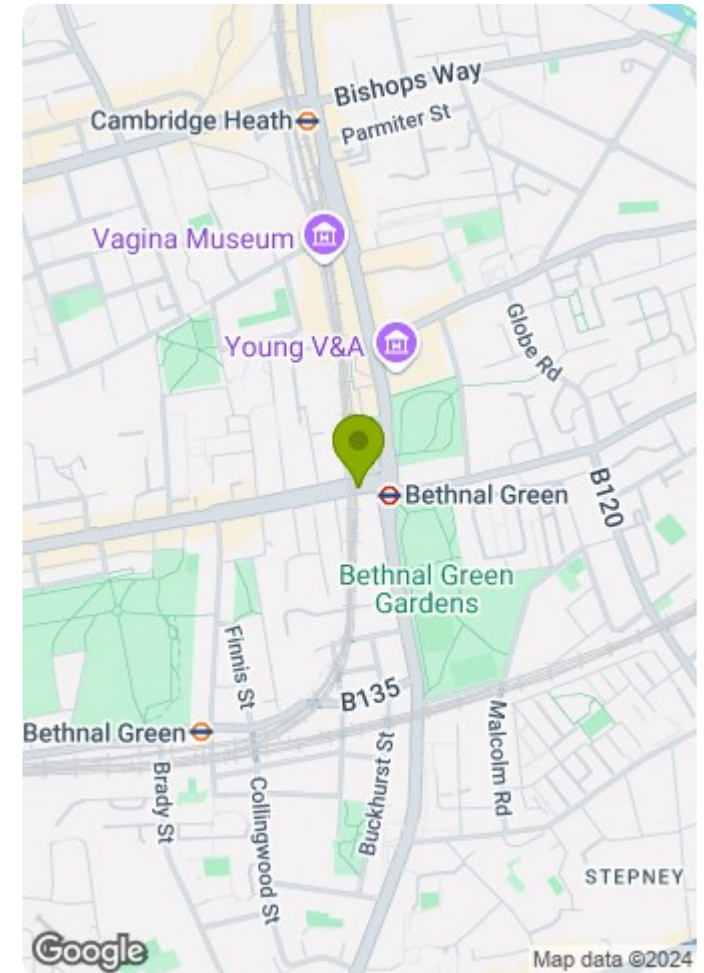
# City View House, E2

Approx. Gross Internal Area 688 Sq Ft - 63.92 Sq M



## Seventh Floor

Floor Area 688 Sq Ft - 63.92 Sq M



Measured according to RICS IPMS2. Floor plan is for illustrative purposes only and is not to scale. Every attempt has been made to ensure the accuracy of the floor plan shown, however all measurements, fixtures, fittings and data shown are an approximate interpretation for illustrative purposes only. 1 sq m = 10.76 sq feet.

lplus.com

Date: 4/9/2024

