



Brierly Gardens  
LONDON, E2 0TF

£3,000 PCM

  
elms  
ESTATES



Elms Estates are Hugely Excited to be able offer TO LET this Three Bedroom Apartment situated within a short walk of either Bethnal Green (Central Line) or Stepney Green (District Line) Tube Stations.

Brierly Gardens is superbly located just off Roman Road and within a 5 minute walk of Bethnal Green tube (central line, zone 2). The property is nestled in an attractive residential area with great independent pubs, shops and restaurants. Within a short walk is the glorious open spaces of Victoria Park along with the beautiful Regents Canal. In the area is also Broadway Market, Brick Lane and Columbia Road Flower Market.

This property offers Bright and Spacious Accommodation with a large reception room, Separate kitchen, three double bedrooms and family bathroom. The property is available 24th August 2024.

Internal viewing of this property is a must and early viewing is highly recommended in order to avoid disappointment.



## Reception Room

14'9" x 10'5" (4.5 x 3.2)



## Kitchen

11'1" x 8'6" (3.4 x 2.6)



## Bedroom One

11'5" x 11'1" (3.5 x 3.4)



## Bedroom Two

11'5" x 9'10" (3.5 x 3.0)



## Bedroom Three

9'2" x 8'6" (2.8 x 2.6)



## Bathroom



## Material Information

Deposit: £3,461.53

Length Of Tenancy: One Year

Council Tax Band: C





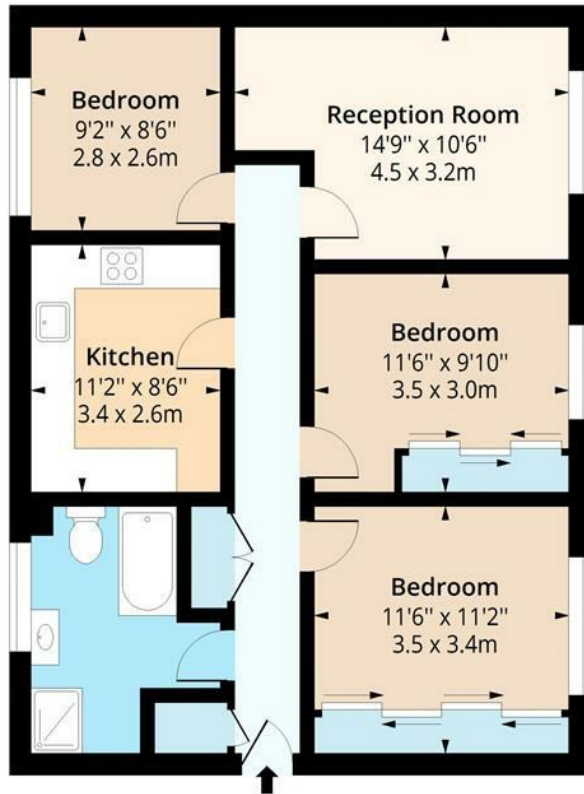






# Brierly Gardens, E2

Approx. Gross Internal Area 797 Sq Ft - 74.04 Sq M



## First Floor

Floor Area 797 Sq Ft - 74.04 Sq M

Floor plan is for illustrative purposes only and is not to scale. Every attempt has been made to ensure the accuracy of the floor plan shown, however all measurements, fixtures, fittings and data shown are an approximate interpretation for illustrative purposes only.

ipaplus.com

