



Seabright Street, London, , E2 0BB
£1,850 PCM

Elms Estates are pleased to be bring to the market To Let this conveniently located one bedroom first floor apartment situated within a short walk of either Bethnal Green (Central Line) Tube Station or Bethnal Green Overground Station.

The property benefits hugely from Gas Central Heating and Double Glazing with the lounge benefitting from a Juliet Balcony that over looks the Green Space of Weavers Fields. Being situated just off of the High Street you will enjoy easy access to all of the Restaurants, Bars, Shops, Markets, Gyms, Parks, Galleries and Museums this Exciting Area has on offer.

This Property is AVAILABLE NOW and viewings are available by appointment.



Reception/Kitchen

13'9" x 13'9" (4.20 x 4.20)

Bedroom

9'10" x 9'10" (3.00 x 3.00)

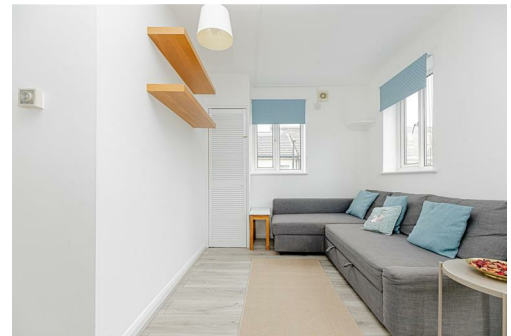
Bathroom

Material Information

Deposit: £2,134.61

Length Of Tenancy: One Year

Council Tax Band: C



Seabright Street, E2

Approx. Gross Internal Area 394 Sq Ft - 36.60 Sq M



First Floor

Floor Area 394 Sq Ft - 36.60 Sq M



Measured according to RICS IPMS2. Floor plan is for illustrative purposes only and is not to scale. Every attempt has been made to ensure the accuracy of the floor plan shown, however all measurements, fixtures, fittings and data shown are an approximate interpretation for illustrative purposes only. 1 sq m = 10.76 sq feet.

lpaplus.com

Date: 7/10/2024

Energy Efficiency Rating		Environmental Impact (CO ₂) Rating	
Current	Potential	Current	Potential
Energy Efficiency Rating			
Very energy efficient - lower running costs			
[92 plus+] A			
[81-91] B			
[69-80] C			
[55-68] D			
[39-54] E			
[21-38] F			
[1-20] G			
Not energy efficient - higher running costs			
79		79	
EU Directive 2002/91/EC		EU Directive 2002/91/EC	
Environmental Impact (CO₂) Rating			
Very environmentally friendly - lower CO ₂ emissions			
[92 plus+] A			
[81-91] B			
[69-80] C			
[55-68] D			
[39-54] E			
[21-38] F			
[1-20] G			
Not environmentally friendly - higher CO ₂ emissions			
EU Directive 2002/91/EC		EU Directive 2002/91/EC	