



1 Gernon Road
LONDON, E3 5DW

£3,500 PCM

Elms Estates are pleased to offer to the market this amazing Four Bedroom split level maisonette situated over the second and third floor.

The property is located on a quiet street and is within a short walk to Mile End and Bethnal Green underground Stations as well as being with short walking distance to local amenities. In addition to these there are Multiple Bus Routes in to the City, West End and beyond.

The property has a spacious lounge and separate kitchen situated on the ground floor, four bedrooms and also benefiting from a shower room on the first floor and additionally a separate w/c are on the ground floor.

The property will be available from 30 August 2024. An early viewing is Highly recommended to avoid disappointment.



Reception Room

10'9" x 7'6" (3.3 x 2.3)



Kitchen

16'8" x 10'2" (5.1 x 3.1)



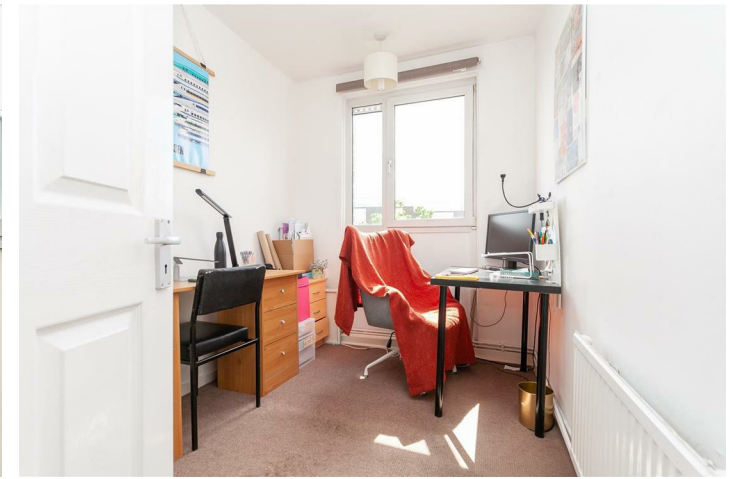
Bedroom One

14'9" x 9'10" (4.5 x 3.0)



Bedroom Two

12'9" x 8'10" (3.9 x 2.7)



Shower Room

Kitchen

16'8" x 10'2" (5.1 x 3.1)



Bedroom Three

10'5" x 8'2" (3.2 x 2.5)



W/c

Bedroom One

14'9" x 9'10" (4.5 x 3.0)

Bedroom Four

9'10" x 6'10" (3.0 x 2.1)

Material Information

Deposit: £4,038.46

Length Of Tenancy: One Year

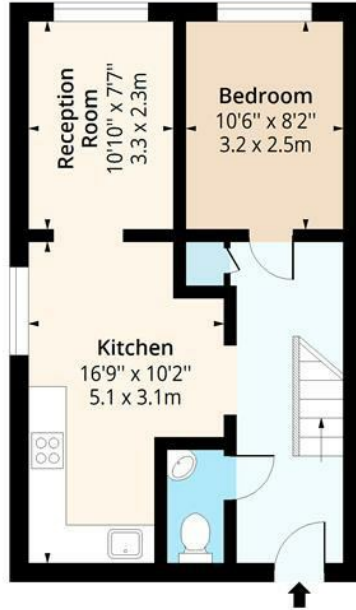
Council Tax Band: C





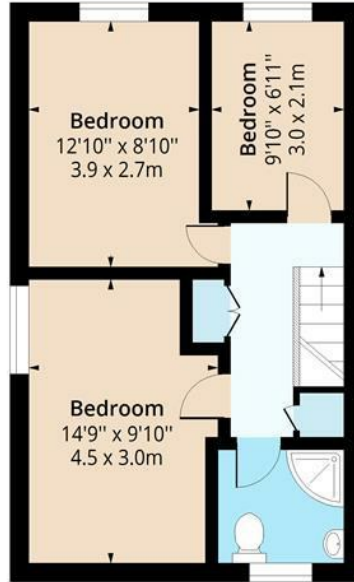
Gernon Road, E3

Approx. Gross Internal Area 924 Sq Ft - 85.84 Sq M



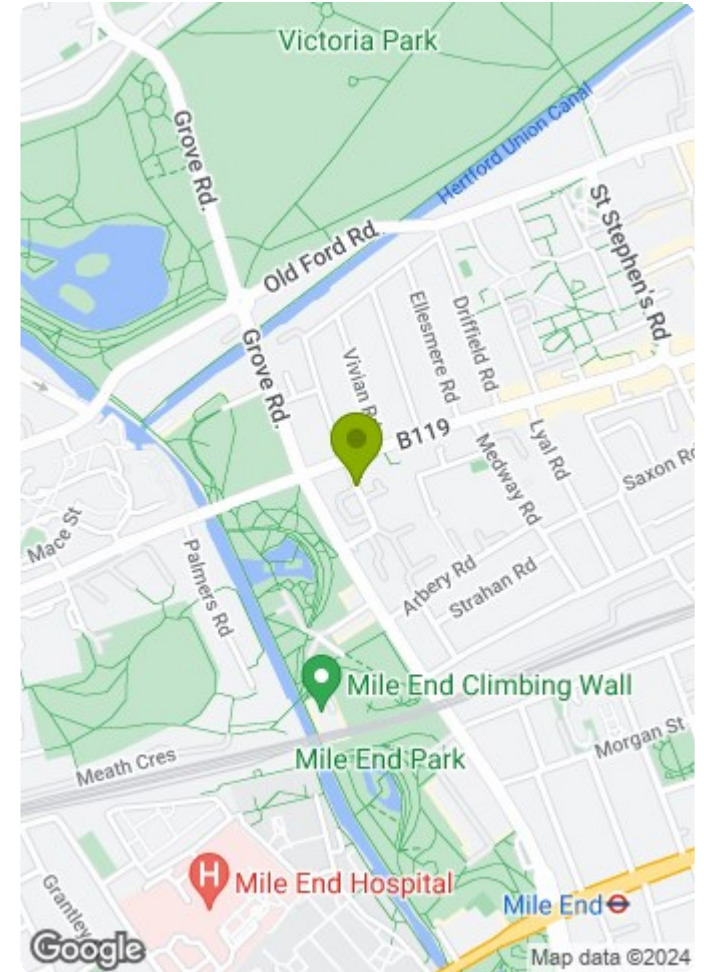
Second Floor

Floor Area 462 Sq Ft - 42.92 Sq M



Third Floor

Floor Area 462 Sq Ft - 42.92 Sq M



Floor plan is for illustrative purposes only and is not to scale. Every attempt has been made to ensure the accuracy of the floor plan shown, however all measurements, fixtures, fittings and data shown are an approximate interpretation for illustrative purposes only.

lpaplus.com

