



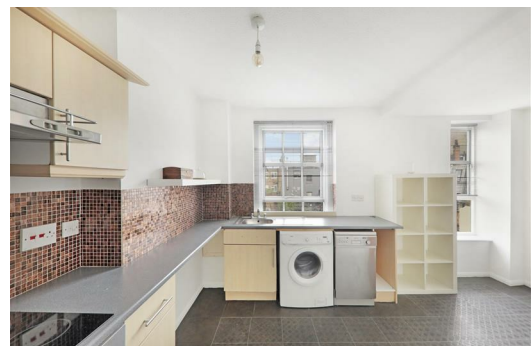
## Ainsley Street, London, , E2 0DL £2,900 Per Month

Elms Estates are pleased to offer to the market To Let this Three Double Bedroom Apartment located on the second Floor of this Beautiful Victorian Building.

The property is situated just off Bethnal Green Road on a delightful street with numerous Green Spaces such as Weaver's Fields, Bethnal Green Gardens, Museum Gardens, St Bartholomew's Gardens within easy reach. It has Excellent Transport Links such as Bethnal Green Underground & Overground Stations close by. It is a short walk to the famous Brick Lane & Shoreditch High Street and close to many superb Local Amenities and an abundance of Shops, Restaurants and Cafes.

Internally the property is presented well with a bright and airy open plan Reception/Kitchen area, Three double bedrooms and shower room. The property is available 19 July 2024 Onwards.

For more information or to arrange a viewing please do not hesitate to call in and speak with one of our Property Consultants.



## Kitchen/Lounge

14'9" x 12'5" (4.5 x 3.8)

## Bedroom One

14'1" x 7'10" (4.3 x 2.4)

## Bedroom Two

12'5" x 8'6" (3.8 x 2.6)

## Bedroom Three

14'1" x 11'1" (4.3 x 3.4)

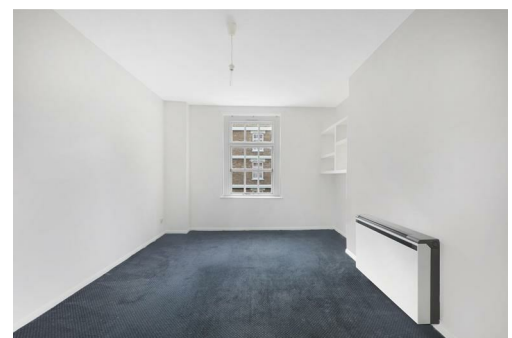
## Bathroom

## Material Information

Deposit: £3,346.15

Length Of Tenancy: One Year

Council Tax Band: D



Energy Efficiency Rating		Environmental Impact (CO <sub>2</sub> ) Rating	
Current	Potential	Current	Potential
<b>Energy Efficiency Rating</b>			
Very energy efficient - lower running costs			
[92 plus+] A			
[81-91] B			
[69-80] C			
[55-68] D			
[39-54] E			
[21-38] F			
[1-20] G			
Not energy efficient - higher running costs			
	82		
	54		
<b>Environmental Impact (CO<sub>2</sub>) Rating</b>			
Very environmentally friendly - lower CO <sub>2</sub> emissions			
[92 plus+] A			
[81-91] B			
[69-80] C			
[55-68] D			
[39-54] E			
[21-38] F			
[1-20] G			
Not environmentally friendly - higher CO <sub>2</sub> emissions			
<b>England &amp; Wales</b>			
EU Directive 2002/91/EC			