



Roberta Street
London, E2 6NU

£2,200 PCM



Elms Estates are pleased to bring to the market To Let this Two Double Bedroom Split-Level Apartment arranged of the 9th and 10th floors and offering spectacular views of the surrounding area.

Yates House is located just off of Bethnal Green Road and offers excellent access to Bethnal Green Tube Station (Central Line) with multiple bus routes into the City, West End and beyond. Additionally the vibrant Brick Lane is within easy reach and offers easy access to all of the Restaurants, Bars, Shops, Markets, Gyms, Parks, Galleries and Museums this Exciting Area has on offer.

The property offers good sized accommodation throughout, a Modern Kitchen and Bathroom, Gas Central Heating and Double Glazing and comes furnished.

Yates House is Available to move in to 30th July and viewing is highly recommended.



Reception Room

19'4" x 11'1" (5.9 x 3.4)



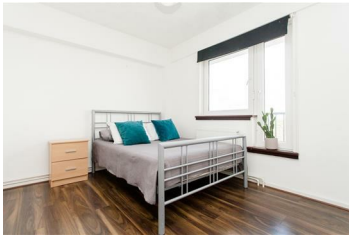
Kitchen

11'5" x 5'6" (3.5 x 1.7)



Bedroom One

11'1" x 9'6" (3.4 x 2.9)



Bedroom Two

11'1" x 9'6" (3.4 x 2.9)



Bathroom

W.C

External



Hallway



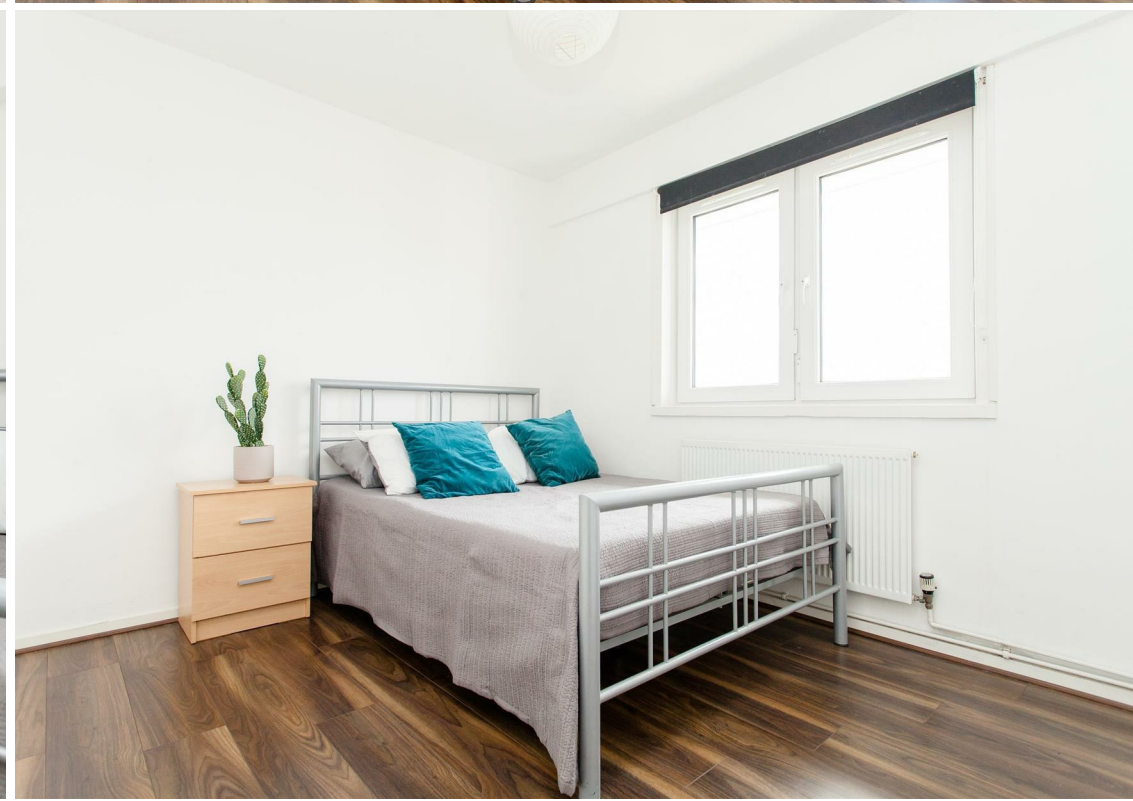
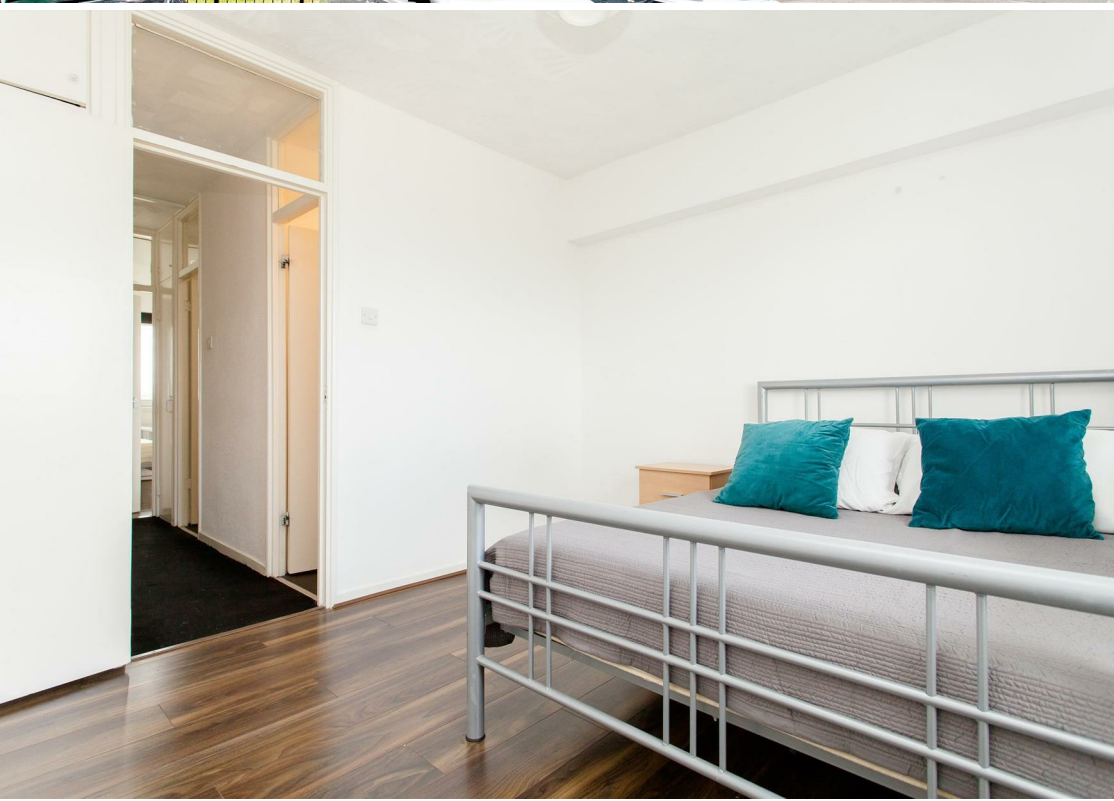
Balcony

Material Information

Deposit: £2,538.46

Length Of Tenancy: One Year

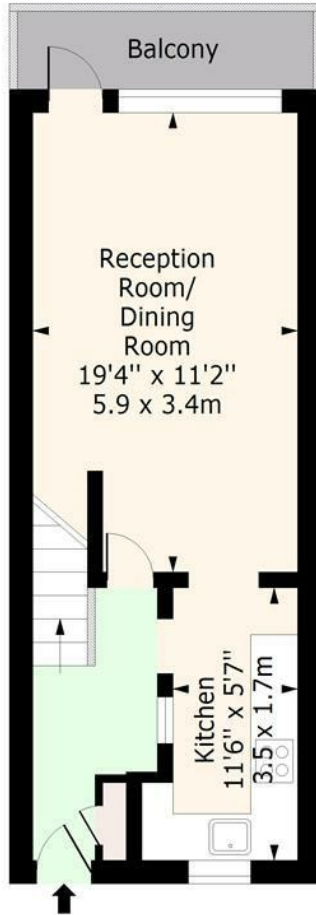
Council Tax Band: B





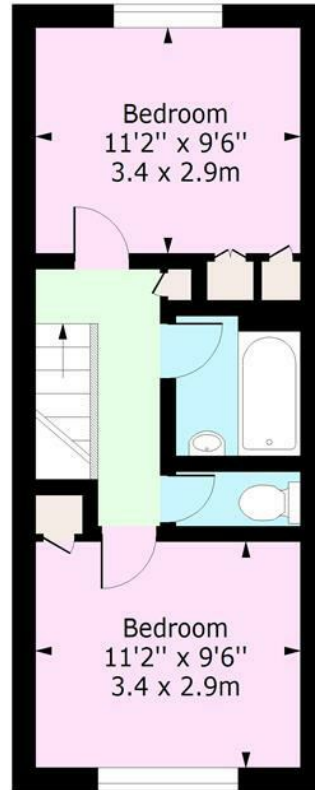
Roberta Street, E2

Approx. Gross Internal Area 699 Sq Ft - 64.94 Sq M



Ninth Floor

Floor Area 351 Sq Ft - 32.61 Sq M

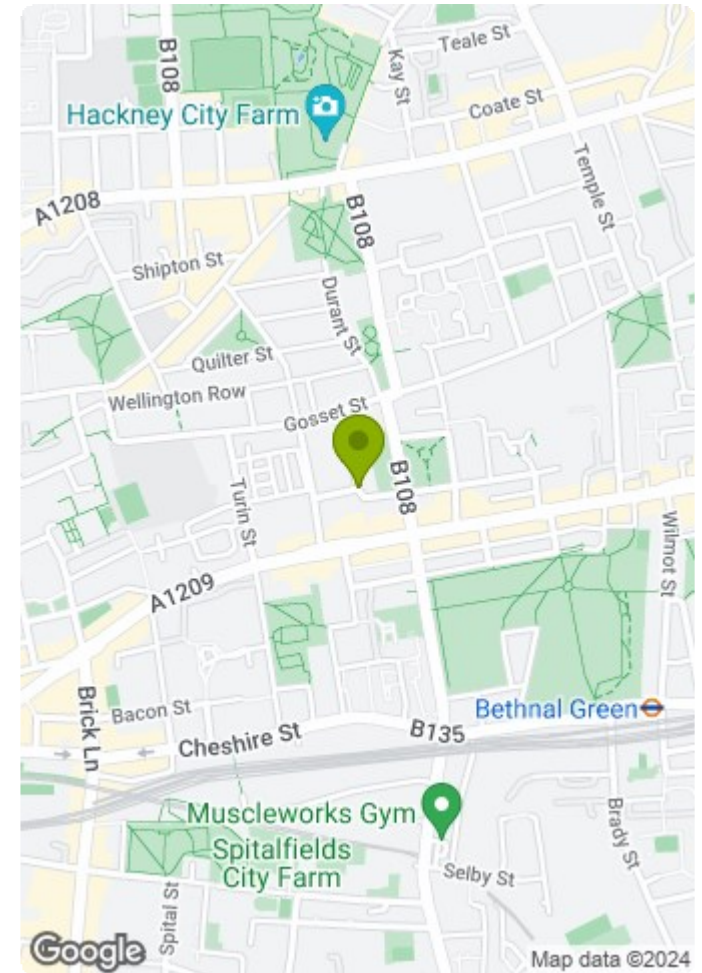


Tenth Floor

Floor Area 348 Sq Ft - 32.33 Sq M

For Illustration Purposes Only - Not To Scale

www.lpaplus.com



Energy Efficiency Rating		Current	Potential
Very energy efficient - lower running costs			
(92 plus) A			
(81-91) B			
(69-80) C			
(55-68) D			
(39-54) E			
(21-38) F			
(1-20) G			
Not energy efficient - higher running costs			
		77	77
England & Wales		EU Directive 2002/91/EC	

Environmental Impact (CO ₂) Rating		Current	Potential
Very environmentally friendly - lower CO ₂ emissions			
(92 plus) A			
(81-91) B			
(69-80) C			
(55-68) D			
(39-54) E			
(21-38) F			
(1-20) G			
Not environmentally friendly - higher CO ₂ emissions			
		78	78
England & Wales		EU Directive 2002/91/EC	