



Old Ford Road, London, , E2 9PN £3,000 PCM

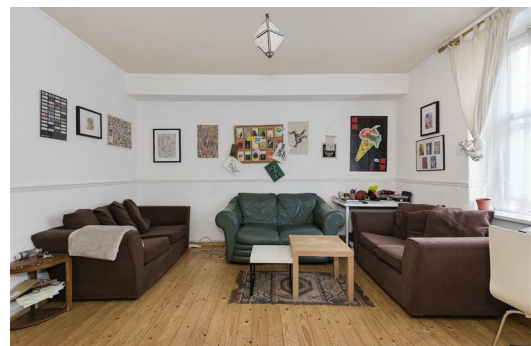
Elms Estates are pleased to offer to the market To Let this Three Bedroom apartment situated just a short walk to Bethnal Green Station.

Evesham House is situated just off of Old Ford Road within easy reach of Bethnal Green (central line) tube station with multiple bus routes in to the City, West End and beyond and additionally the glorious Victoria Park is within a short walk and offers beautiful open spaces and miles of scenic walks. The relaxed, cool feel of Victoria Park farmers market will make for wonderful lazy Sunday morning strolls and with Regents Canal also on your doorstep you will find endless new places to explore. This property really is set within the heart of the East End with easy access to all of the restaurants, bars, shops, markets, gyms, parks, galleries and museums this exciting area has to offer.

Internally the property benefits from good living space with a separate kitchen, Three good size bedrooms and family Bathroom.

The property is available 05th July 2024

For more information or to arrange a viewing please do not hesitate to call in and speak with one of our Property Consultants.



Reception Room

Kitchen

Bedroom One

Bedroom Two

Bedroom Three

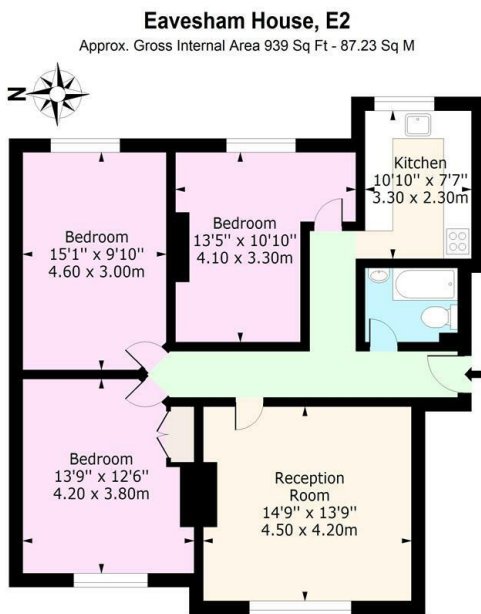
Bathroom

Material Information

Deposit: £3,461.53

Length Of Tenancy: One Year

Council Tax Band: C



Ground Floor
Floor Area 939 Sq Ft - 87.23 Sq M

For Illustration Purposes Only - Not To Scale
www.lpaplus.com

Energy Efficiency Rating		Environmental Impact (CO ₂) Rating	
Current	Potential	Current	Potential
Very energy efficient - lower running costs			
(92 plus) A		Very environmentally friendly - lower CO ₂ emissions	
(81-91) B		(92 plus) A	
(69-80) C		(81-91) B	
(55-68) D		(69-80) C	
(39-54) E		(55-68) D	
(21-38) F		(39-54) E	
(1-20) G		(21-38) F	
Not energy efficient - higher running costs			
England & Wales EU Directive 2002/91/EC		England & Wales EU Directive 2002/91/EC	

