



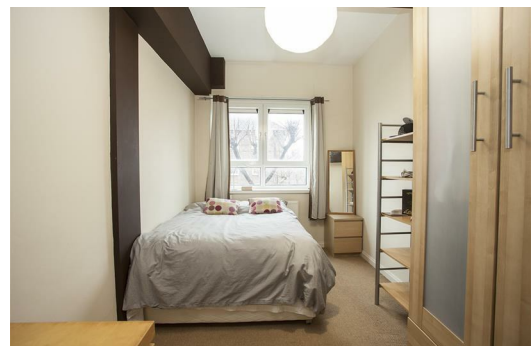
City View House, LONDON, , E2 9QY £2,250 PCM

Elms Estates are delighted to offer to the market To Let this Two Double Bedroom Apartment Located within the ever popular and well-maintained City View House in the Heart Of Bethnal Green.

City View House is located directly on Bethnal Green Road and is only a few hundred meters from Bethnal Green (Central Line) Tube Station. Bethnal Green (London Overground) Train Station is within a couple of minutes' walk. Located within the heart of the East End, you will enjoy easy access to all of the restaurants, bars, shops, markets, gyms, parks, galleries and museums this exciting area has on offer.

Internally the property benefits from a spacious reception area, fitted kitchen, two double bedrooms and bathroom. The property is available to move in to from 25 June 2024 Onwards and early viewing is advised in order to avoid disappointment.

For more information or to arrange a viewing please do not hesitate to call in and speak with one of our property Consultants.



Reception

Kitchen

Bedroom One

Bedroom Two

Bathroom

Material Information

Deposit: £2,596.15

Length Of Tenancy: One Year

Council Tax Band: D

