



Wilmot Street  
, E2 0BS  
£1,750 PCM





Elms Estates are pleased to offer to the market To Let this One Double Bedroom Apartment located on the first Floor of this Beautiful Victorian Building.

The property is situated just off Bethnal Green Road on a delightful street with numerous Green Spaces such as Weaver's Fields, Bethnal Green Gardens, Museum Gardens, St Bartholomew's Gardens within easy reach. It has Excellent Transport Links such as Bethnal Green Underground & Overground Stations close by. It is a short walk to the famous Brick Lane & Shoreditch High Street and close to many superb Local Amenities and an abundance of Shops, Restaurants and Cafes.

Internally the property has a spacious lounge and kitchen, One double bedroom and bathroom. The property is available to move in to from 30th May 2024 Onwards.

For more information or to arrange a viewing please do not hesitate to call in and speak with one of our Property Consultants.



## Reception Room

11'5" x 8'6" (3.5 x 2.6)



## Kitchen

9'10" x 7'10" (3.0 x 2.4)



## Bedroom

12'5" x 7'10" (3.8 x 2.4)



## Bathroom



## Material Information

Deposit: £2,019.23

Length Of Tenancy: One Year

Council Tax Band: B

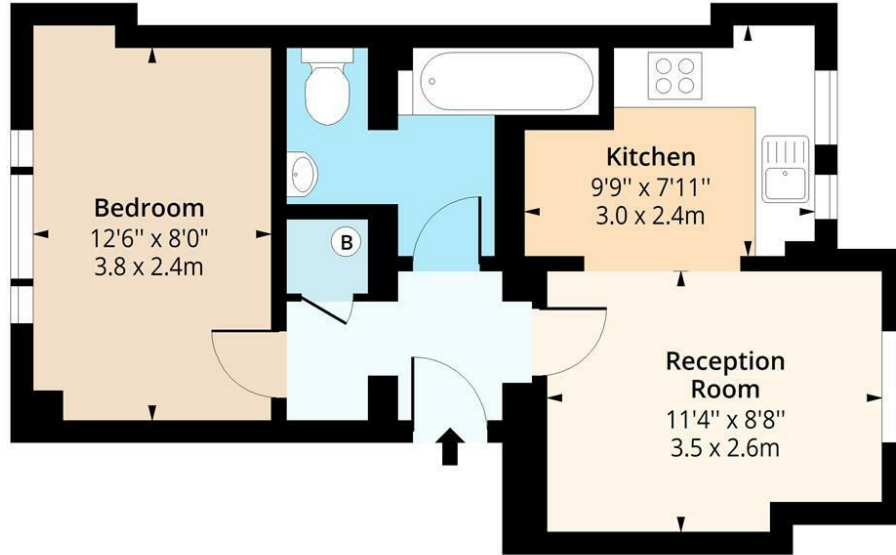






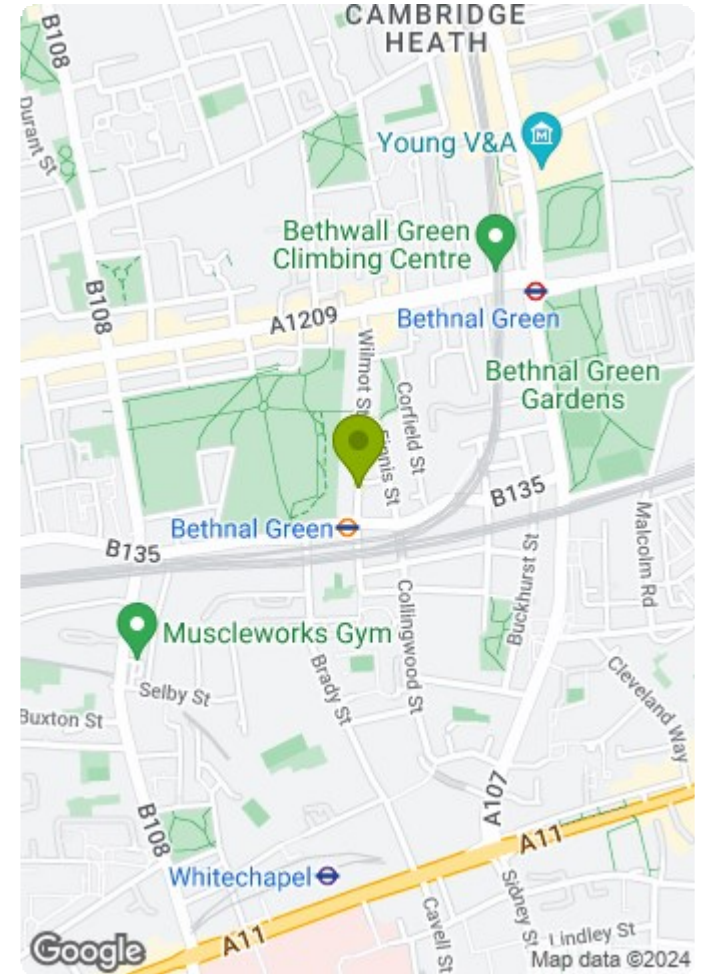
# Wilmot Street, London E2

Approx. Gross Internal Area 382 Sq Ft - 35.49 Sq M



## First Floor

Floor Area 382 Sq Ft - 35.49 Sq M



Measured according to RICS IPMS2. Floor plan is for illustrative purposes only and is not to scale. Every attempt has been made to ensure the accuracy of the floor plan shown, however all measurements, fixtures, fittings and data shown are an approximate interpretation for illustrative purposes only. 1 sq m = 10.76 sq feet.

lpaplus.com

Date: 4/9/2023

