



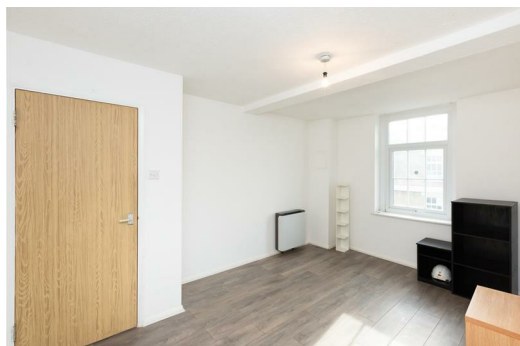
Ainsley Street, London, , E2 0DL £2,300 PCM

Elms Estates are delighted to offer to the market To Let this Two double bedroom apartment located in the heart of Bethnal Green.

Ainsley Street is situated just off Bethnal Green Road on a delightful street with numerous Green Spaces such as Weaver's Fields, Bethnal Green Gardens, Museum Gardens, St Bartholmew Gardens within easy reach. It has Excellent Transport Links such as Bethnal Green Underground & Overground Stations close by. It is a short walk to the famous Brick Lane & Shoreditch High Street and close to many superb Local Amenities and an abundance of Shops, Restaurants and Cafes.

Internally the property has a spacious lounge with separate kitchen benefiting from room for a dining table, two double bedrooms and bathroom. The benefits from a private balcony and is available to move in to from 7th June 2024 Onwards.

To arrange a viewing please call in and speak with one of our property consultants. Early inspection is highly recommended to avoid disappointment.



Reception Room

13'9" x 11'5" (4.20 x 3.50)

Kitchen/Dinner

14'1" x 12'5" (4.3 x 3.8)

Bedroom One

12'5" x 8'10" (3.8 x 2.7)

Bedroom Two

14'1" x 7'2" (4.3 x 2.2)

Bathroom

Balcony

Material Information

Deposit: £2,653.84

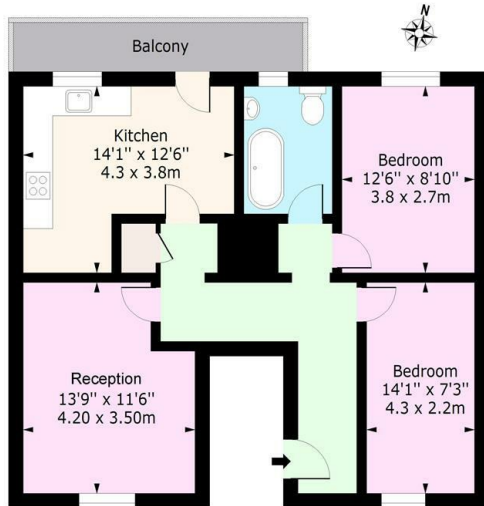
Length Of Tenancy: One Year

Council Tax Band: D



Ainsley Street, E2

Approx. Gross Internal Area (Excluding Balcony) 752 Sq Ft - 69.86 Sq M
Approx. Gross Internal Area (Including Balcony) 816 Sq Ft - 75.81 Sq M



Fourth Floor

Floor Area 752 Sq Ft - 69.86 Sq M

For Illustration Purposes Only - Not To Scale
www.lpaplus.com

