



Goswell Road  
London, EC1V 0AF  
£2,900 PCM



Elms Estates are absolutely delighted to be able to offer to the market To Let this Amazing Two bedroom apartment.

The Triangle is very well located with Old Street, Farringdon and barbican tube stations only just a short walk away to make your commute very easy and giving you access to the whole of London. This property is superbly located with every amenity on your doorstep with an array of restaurants, bars, shops, markets, gyms and everything else this exciting area has to offer.

Internally the property is presented well with spacious living accommodation, modern Kitchen, two double bedrooms, Family bathroom and a shower room.

The property available to move in to from 24 May 2024 Onwards and early viewing is recommended.

For more information or to arrange a viewing please do not hesitate to call in and speak with one of our Property Consultants.



**Reception Room/Kitchen** 19'4" x 18'0" (5.9 x 5.5)



**Bedroom One** 12'5" x 9'6" (3.8 x 2.9)



**Bedroom Two** 12'5" x 9'2" (3.8 x 2.8)



**Bathroom**



**Shower Room**



**Material Information**

Deposit: £3,346.15

Length Of Tenancy: One Year

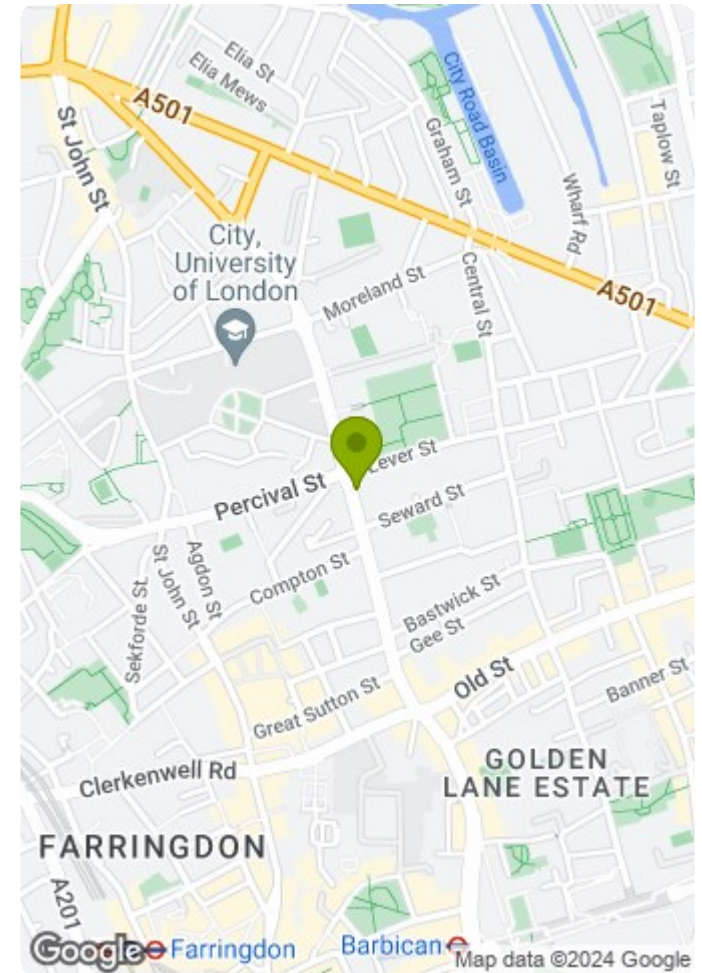
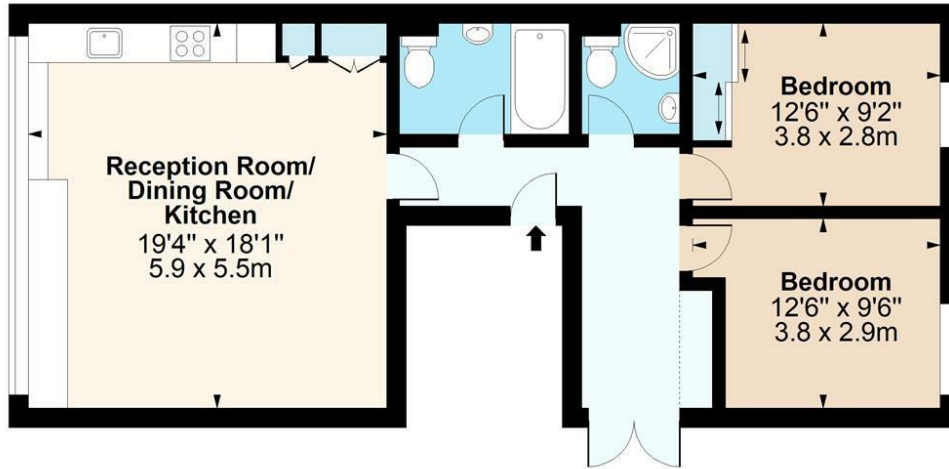
Council Tax Band: D





# The Triangle, Goswell Road, EC1V

Approx. Gross Internal Area 789 Sq Ft - 73.30 Sq M



## Fifth Floor

Floor Area 789 Sq Ft - 73.30 Sq M



Measured according to RICS IPMS2. Floor plan is for illustrative purposes only and is not to scale. Every attempt has been made to ensure the accuracy of the floor plan shown, however all measurements, fixtures, fittings and data shown are an approximate interpretation for illustrative purposes only. 1 sq m = 10.76 sq feet.

lpaplus.com

Date: 9/3/2023

