



Wilmot Street, London, , E2 0BU £2,250 PCM

Elms Estates are pleased to offer to the market For Let this Two Double Bedroom Apartment located on the first Floor of this Beautiful Victorian Building.

The property is situated just off Bethnal Green Road on a delightful street with numerous Green Spaces such as Weaver's Fields, Bethnal Green Gardens, Museum Gardens, St Bartholomew's Gardens all within easy reach. It has Excellent Transport Links such as Bethnal Green Underground & Overground Stations close by. It is a short walk to the famous Brick Lane & Shoreditch High Street and close to many superb Local Amenities and an abundance of Shops, Restaurants and Cafes.

Internally the property offers a open plan Reception/Kitchen area, Two double bedroom, Study and family bathroom. The property is Available 15th May 2024

For more information or to arrange a viewing please do not hesitate to call in and speak with one of our Property Consultants.



Reception/Kitchen

15'5" x 10'2" (4.7 x 3.1)

Bedroom One

15'5" x 12'5" (4.7 x 3.8)

Bedroom Two

13'9" x 11'1" (4.2 x 3.4)

Study

8'6" x 8'2" (2.6 x 2.5)

Bathroom

Material Information

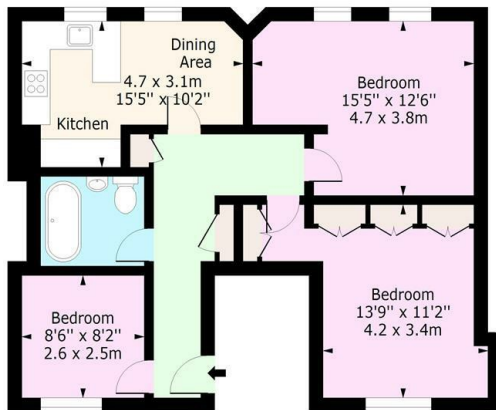
Deposit: £2,596.15

Length Of Tenancy: One Year

Council Tax Band: D



Wilmot Street, E2 0BY
Approx. Gross Internal Area 732 Sq Ft - 68.00 Sq M



First Floor
Floor Area 732 Sq Ft - 68.00 Sq M

For Illustration Purposes Only - Not To Scale
www.lpaplus.com

Energy Efficiency Rating		Environmental Impact (CO ₂) Rating	
Current	Potential	Current	Potential
<p>Very energy efficient - lower running costs</p> <p>(92 plus) A</p> <p>(81-91) B</p> <p>(69-80) C</p> <p>(55-68) D</p> <p>(39-54) E</p> <p>(21-38) F</p> <p>(1-20) G</p> <p>Not energy efficient - higher running costs</p>			
	82		72
<p>England & Wales</p> <p>EU Directive 2002/91/EC</p>			