



London Terrace
London, E2 7SQ
£1,800 PCM



Elms Estates are delighted to bring to the market To Let this spacious One Bedroom Apartment which is fantastically located on Hackney Road.

London Terrace is a stone's throw away from the World Famous Columbia Road Flower Market and the vibrant Broadway Market is also a short walk away and offers an array of shops and dining experiences. This property really is set within the Heart of the East End with easy access to all of the Restaurants, Bars, Shops, Markets, Gyms, Parks, Galleries and Museums this Exciting Area has on offer.

Internally the property is spacious throughout offering good sized living accommodation with an open plan lounge/kitchen, Double Bedroom and bathroom.

London Terrace is Available to move in from 24th April 2024 and a early viewing is recommended as this property will not be available for long.



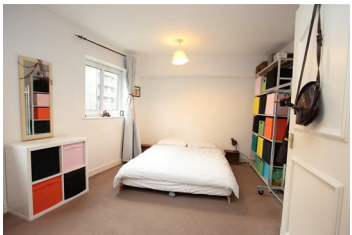
Lounge



Kitchen



Bedroom



Bathroom



Outside



Material Information

Deposit: £2,076.92
Length Of Tenancy: One Year
Council Tax Band: C





