



Ainsley Street
London, E2 0DL

£475,000



Elms Estates are pleased to offer to the market For Sale this Two Bedroom Apartment located on the second Floor of this Beautiful Victorian Building.

The property is situated just off Bethnal Green Road on a delightful street with numerous Green Spaces such as Weaver's Fields, Bethnal Green Gardens, Museum Gardens, St Bartholmew Gardens within easy reach. It has Excellent Transport Links such as Bethnal Green Underground & Overground Stations close by. It is a short walk to the famous Brick Lane & Shoreditch High Street and close to many superb Local Amenities and an abundance of Shops, Restaurants and Cafes.

Internally the property has a spacious lounge with separate modern fitted kitchen, Two good size bedrooms and contemporary bathroom. This property is offered to the market on a CHAIN FREE basis.

For more information or to arrange a viewing please do not hesitate to call in and speak with one of our Property Consultants.



Reception Room

14'1" x 11'1" (4.3 x 3.4)

Material Information

Tenure: Leasehold

Length Of Lease: Approx 88 Years remaining

Annual Ground Rent: £150.00 Per year

Annual Service Charge: £2,076.00

Council Tax Band: D



Kitchen

14'9" x 12'5" (4.5 x 3.8)



Bedroom One

14'1" x 7'10" (4.3 x 2.4)



Bedroom Two

12'5" x 8'6" (3.8 x 2.6)



Bathroom

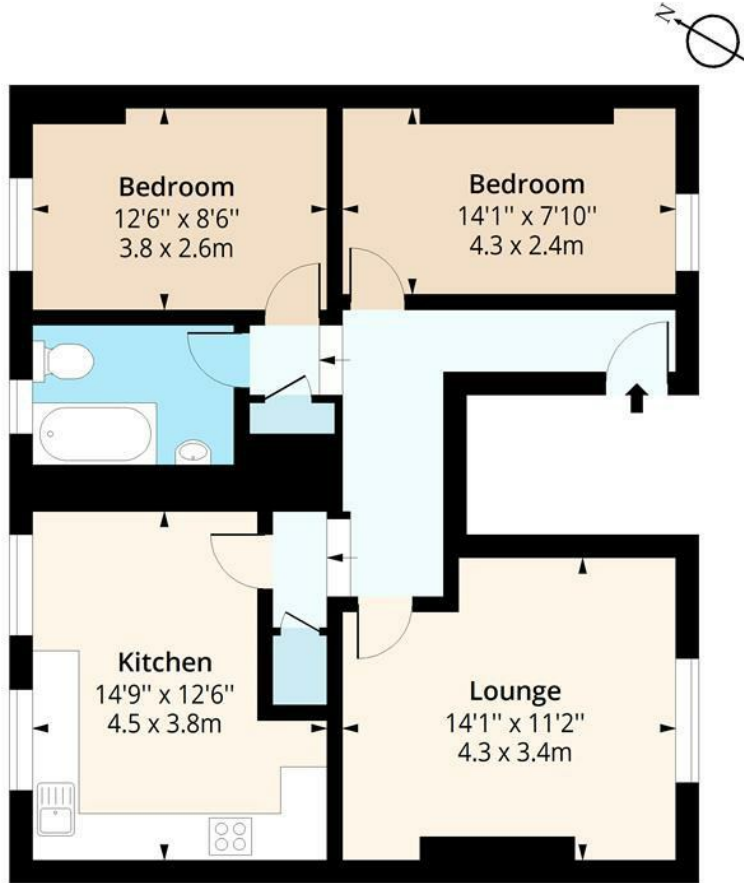






Ainsley Street, E2

Approx. Gross Internal Area 789 Sq Ft - 73.30 Sq M



Second Floor

Floor Area 789 Sq Ft - 73.30 Sq M



Measured according to RICS IPMS2. Floor plan is for illustrative purposes only and is not to scale. Every attempt has been made to ensure the accuracy of the floor plan shown, however all measurements, fixtures, fittings and data shown are an approximate interpretation for illustrative purposes only. 1 sq m = 10.76 sq feet.

lplus.com

Date: 26/10/2023

